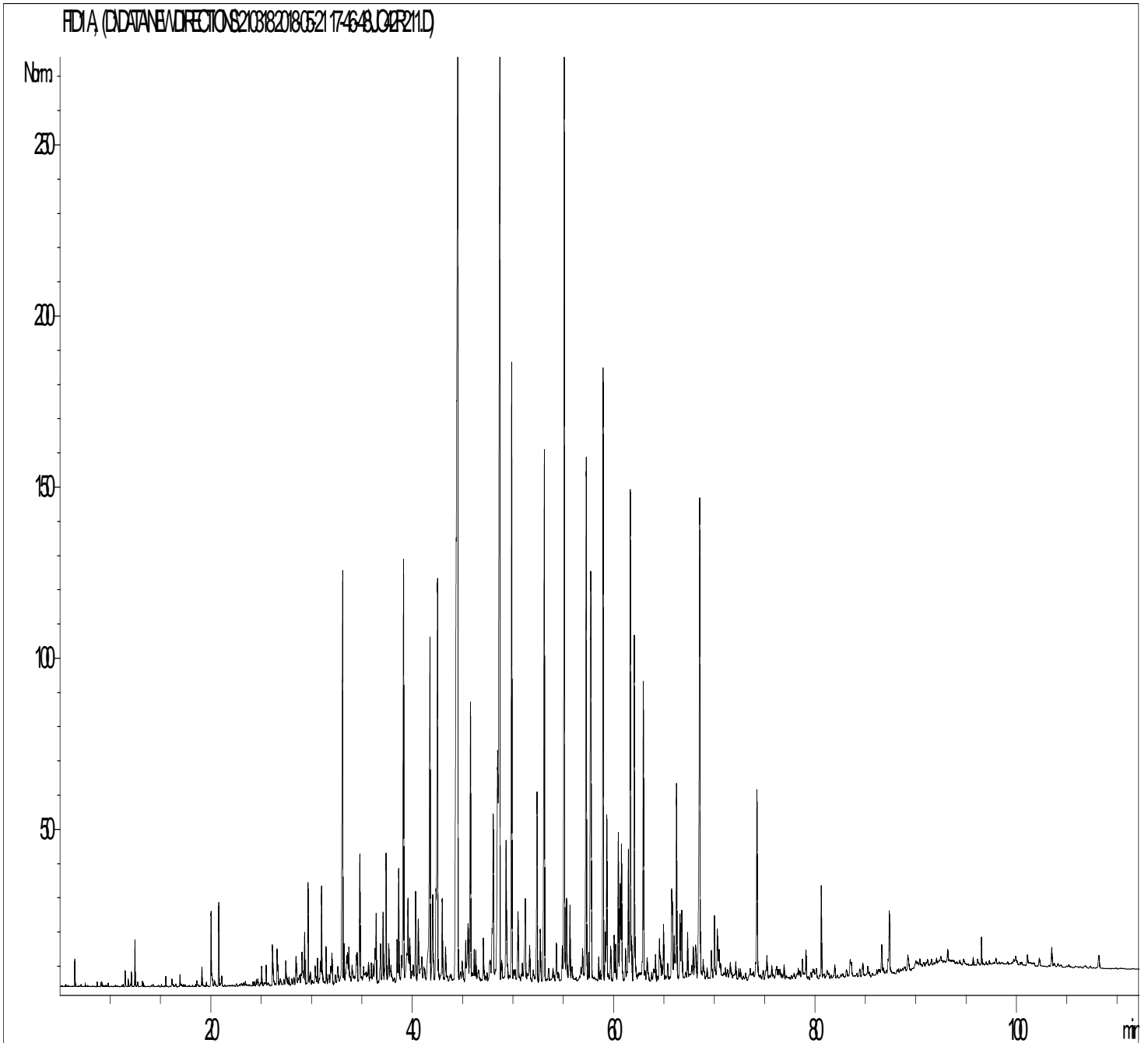




GCMS ANALYSIS

PRODUCT NAME: CADE RECTIFIED ESSENTIAL OIL - 11293

DATE: May 30, 2018



Due to volume turnover, this report is not lot specific. It is representative of the quality of this oil produced by the manufacturer of this product. Specific lots may vary slightly as is the case in natural products.

GCMS ANALYSIS (cont'd.)

PRODUCT NAME: CADE RECTIFIED ESSENTIAL OIL - 11293

Peak	RT (min)	Component name	%
1	6,5	alpha-PINENE	0,06
2	6,6	alpha-THUYENE	0,01
3	8,7	3-PENTEN-2-ONE	0,01
4	9,2	o-XYLENE	0,01
5	9,8	beta-MYRCENE	0,01
6	11,5	CYCLOPENTANONE	0,05
7	11,8	p-XYLENE	0,02
8	12,1	CYCLOPENTANONE, 2-METHYL	0,06
9	12,5	LIMONENE	0,14
10	12,7	CYCLOPENTANONE, 3-METHYL	0,02
11	15,5	p-CYMENE	0,03
12	16,1	AROMATIC COMPOUND	0,04
13	16,9	2-PROPANONE,1-HYDROXY-	0,04
14	19,1	METHYLCYCLOALKYL COMPOUND	0,07
15	20,0	2-CYCLOPENTENONE	0,36
16	20,3	AROMATIC COMPOUND	0,03
17	20,7	2-CYCLOPENTENONE, 2-METHYL	0,32
18	21,1	1-HYDROX-2-BUTANONE	0,05
19	25,0	alpha,p-DIMETHYLSTYRENE	0,09
20	25,5	2-CYCLOPENTENONE, 2,3-DIMETHYL	0,08
21	26,1	ACETIC ACID	0,25
22	26,5	FURFURAL	0,16
23	26,7	2-PROPANONE,1-(ACETYLOXY)-	0,08
24	26,9	alpha-CUBEBENE	0,06
25	27,2	SESQUITERPENE	0,04
26	27,4	2-CYCLOPENTENONE, 3,4-DIMETHYL	0,14
27	27,6	SESQUITERPENE	0,04
28	27,8	AROMATIC COMPOUND	0,04
29	28,0	YLANGENE	0,05
30	28,2	CYCLOPENTENONE COMPOUND	0,04

Disclaimer & Caution

Please refer to all relevant technical information specific to the product, prior to use. The information contained in this document is obtained from current and reliable sources. New Directions Aromatics Inc. provides the information contained herein, but makes no representation as to its comprehensiveness or accuracy. Individuals receiving this information must exercise their independent judgment in determining its appropriateness for a particular purpose. The user of the product is solely responsible for compliance with all laws and regulations applying to the use of the products, including intellectual property rights of third parties. As the ordinary or otherwise use(s) of this product is outside the control of New Directions Aromatics Inc., no representation or warranty, expressed or implied, is made as to the effect(s) of such use(s), (including damage or injury), or the results obtained. The liability of New Directions Aromatics Inc. is limited to the value of the goods and does not include any consequential loss. New Directions Aromatics Inc. shall not be liable for any errors or delays in the content, or for any actions taken in reliance thereon. New Directions Aromatics Inc. shall not be responsible for any damages resulting from use of or reliance upon this information. In the event of any dispute, the Customer hereby agrees that Jurisdiction is limited to the province of Ontario.

GCMS ANALYSIS (cont'd.)

PRODUCT NAME: CADE RECTIFIED ESSENTIAL OIL - 11293

Peak	RT (min)	Component name	%
31	28,5	ETHANONE FURANYL ISOMER	0,21
32	28,8	alpha-COPAENE	0,12
33	29,1	FURANYL COMPONENT	0,27
34	29,3	CALARENE ISOMER	0,29
35	29,6	CYCLOPENTENONE COMPOUND	0,49
36	29,9	IONONE COMPOUND Mw=204	0,09
37	30,3	SELINENE ISOMER	0,15
38	30,6	LONGIPINENE ISOMER	0,12
39	30,9	ETHANONE COMPOUND	0,10
40	31,0	CYCLOPENTENONE DIMETHYL ISOMER	0,53
41	31,4	PROPANOIC ACID	0,19
42	31,7	SESQUITERPENE	0,07
43	31,9	CYCLOPENTENONE TRIMETHYL ISOMER	0,09
44	32,0	SESQUITERPENE	0,20
45	32,4	SESQUITERPENE	0,07
46	32,6	SESQUITERPENE	0,16
47	33,1	alpha-CEDRENE	2,60
48	33,2	FURFURAL METHYL	0,21
49	33,4	SESQUITERPENE	0,20
50	33,6	CEDRENE ISOMER	0,18
51	33,7	GUAIONE ISOMER	0,20
52	34,0	beta-ELEMENE + alpha-GUAIONE	0,14
53	34,4	beta-CUBEBENE	0,15
54	34,5	beta-CARYOPHYLLENE	0,16
55	34,8	beta-CEDRENE	0,77
56	35,2	AROMADENDRENE	0,16
57	35,6	THUYOPSENE	0,14
58	35,9	KETONE COMPOUND	0,16
59	36,1	AROMATIC COMPOUND	0,13
60	36,3	CADINA-3,5-DIENE	0,18

Disclaimer & Caution

Please refer to all relevant technical information specific to the product, prior to use. The information contained in this document is obtained from current and reliable sources. New Directions Aromatics Inc. provides the information contained herein, but makes no representation as to its comprehensiveness or accuracy. Individuals receiving this information must exercise their independent judgment in determining its appropriateness for a particular purpose. The user of the product is solely responsible for compliance with all laws and regulations applying to the use of the products, including intellectual property rights of third parties. As the ordinary or otherwise use(s) of this product is outside the control of New Directions Aromatics Inc., no representation or warranty, expressed or implied, is made as to the effect(s) of such use(s), (including damage or injury), or the results obtained. The liability of New Directions Aromatics Inc. is limited to the value of the goods and does not include any consequential loss. New Directions Aromatics Inc. shall not be liable for any errors or delays in the content, or for any actions taken in reliance thereon. New Directions Aromatics Inc. shall not be responsible for any damages resulting from use of or reliance upon this information. In the event of any dispute, the Customer hereby agrees that Jurisdiction is limited to the province of Ontario.

GCMS ANALYSIS (cont'd.)

PRODUCT NAME: CADE RECTIFIED ESSENTIAL OIL - 11293

Peak	RT (min)	Component name	%
61	36,4	BUTYROLACTONE	0,36
62	36,8	SESQUITERPENE	0,08
63	36,9	BUTANOIC ACID	0,18
64	37,1	DIHYDROEDULAN ISOMER	0,44
65	37,4	GERMACRENE A	0,79
66	37,7	FURANONE COMPOUND	0,23
67	37,9	SESQUITERPENE	0,16
68	38,5	SESQUITERPENE	0,22
69	38,6	ZONARENE	0,64
70	38,9	alpha-HUMULENE	0,16
71	39,1	DEHYDROCURCUMENE ISOMER	2,34
72	39,5	SESQUITERPENE	0,24
73	39,6	gamma-SELINENE	0,57
74	39,8	AROMATIC COMPOUND	0,30
75	39,9	AROMATIC COMPOUND	0,08
76	40,1	4,5-di-épi-ARISTOLOCHENE	0,12
77	40,3	gamma-MUUROLENE	0,54
78	40,6	SESQUITERPENE	0,43
79	40,8	LEDENE	0,10
80	40,9	AROMATIC COMPOUND	0,19
81	41,1	AROMATIC COMPOUND	0,18
82	41,6	SESQUITERPENE	0,31
83	41,8	GERMACRENE D	2,12
84	42,0	beta-SELINENE + SESQUITERPENE	0,67
85	42,3	alpha-SELINENE	0,47
86	42,5	alpha-MUUROLENE	2,41
87	43,0	NAPHTHALENE	0,54
88	43,3	VALERIANIC ACID + SESQUITERPENE Mw=202	0,18
89	44,5	delta-CADINENE	10,62
90	44,8	gamma-CADINENE	0,10

Disclaimer & Caution

Please refer to all relevant technical information specific to the product, prior to use. The information contained in this document is obtained from current and reliable sources. New Directions Aromatics Inc. provides the information contained herein, but makes no representation as to its comprehensiveness or accuracy. Individuals receiving this information must exercise their independent judgment in determining its appropriateness for a particular purpose. The user of the product is solely responsible for compliance with all laws and regulations applying to the use of the products, including intellectual property rights of third parties. As the ordinary or otherwise use(s) of this product is outside the control of New Directions Aromatics Inc., no representation or warranty, expressed or implied, is made as to the effect(s) of such use(s), (including damage or injury), or the results obtained. The liability of New Directions Aromatics Inc. is limited to the value of the goods and does not include any consequential loss. New Directions Aromatics Inc. shall not be liable for any errors or delays in the content, or for any actions taken in reliance thereon. New Directions Aromatics Inc. shall not be responsible for any damages resulting from use of or reliance upon this information. In the event of any dispute, the Customer hereby agrees that Jurisdiction is limited to the province of Ontario.

GCMS ANALYSIS (cont'd.)

PRODUCT NAME: CADE RECTIFIED ESSENTIAL OIL - 11293

Peak	RT (min)	Component name	%
91	45,0	delta-SELINENE	0,19
92	45,3	alpha-CURCUMENE	0,20
93	45,5	SELINADIENE-4,7	0,55
94	45,8	CADINA-1,4-DIENE	1,55
95	46,1	CYCLOPENTENONE, HYDROXY-METHYL ISOMER	0,19
96	46,3	alpha-AMORPHENE	0,18
97	47,0	3,4-DIMETHOXYTOLUENE	0,28
98	47,7	CYPERADIENE ISOMER	0,24
99	47,9	CUPARENE	0,27
100	48,1	CYCLOPENTENONE, HYDROXY-METHYL ISOMER	0,96
101	48,5	Cis-CALAMENENE	1,62
102	48,7	Trans-CALAMENENE	7,15
103	48,8	COMPOSÉ Mw=220	0,17
104	49,3	NAPHTALENE METHYL ISOMER Mw=142	0,94
105	49,9	MEQUINOL	2,95
106	50,5	PHENOLIC COMPOUND	0,47
107	50,9	COMPOUND Mw=220	0,11
108	51,2	NAPHTALENE, 2-METHYL	0,65
109	51,6	CYCLOPENTENONE COMPOUND	0,25
110	52,4	CALACORENE ISOMER	1,08
111	52,7	PHENOLIC COMPOUND	0,32
112	53,1	alpha-CALACORENE	3,07
113	53,5	OPLOPENONE ISOMERE	0,09
114	54,3	CREOSOL ISOMER	0,18
115	54,9	AROMATIC COMPOUND Mw=202	0,18
116	55,1	CREOSOL	4,86
117	55,3	MALTOL	0,52
118	55,6	AROMATIC COMPOUND Mw=152	0,45
119	55,8	CYCLOKETONE COMPOUND	0,08
120	56,9	NAPHTALENE, 1,4-DIMETHYL	0,21

Disclaimer & Caution

Please refer to all relevant technical information specific to the product, prior to use. The information contained in this document is obtained from current and reliable sources. New Directions Aromatics Inc. provides the information contained herein, but makes no representation as to its comprehensiveness or accuracy. Individuals receiving this information must exercise their independent judgment in determining its appropriateness for a particular purpose. The user of the product is solely responsible for compliance with all laws and regulations applying to the use of the products, including intellectual property rights of third parties. As the ordinary or otherwise use(s) of this product is outside the control of New Directions Aromatics Inc., no representation or warranty, expressed or implied, is made as to the effect(s) of such use(s), (including damage or injury), or the results obtained. The liability of New Directions Aromatics Inc. is limited to the value of the goods and does not include any consequential loss. New Directions Aromatics Inc. shall not be liable for any errors or delays in the content, or for any actions taken in reliance thereon. New Directions Aromatics Inc. shall not be responsible for any damages resulting from use of or reliance upon this information. In the event of any dispute, the Customer hereby agrees that Jurisdiction is limited to the province of Ontario.

GCMS ANALYSIS (cont'd.)

PRODUCT NAME: CADE RECTIFIED ESSENTIAL OIL - 11293

Peak	RT (min)	Component name	%
121	57,3	NAPHTALENE, 1,5-DIMETHYL	2,85
122	57,5	PHENOL, 2,3,5-TRIMETHYL	0,12
123	57,7	PHENOL	3,10
124	58,5	ETHANONE, 2-HYDROXY-6-METHOXYPHENYL	0,11
125	59,0	PHENOL, 4-ETHYL-2-METHOXY	2,84
126	59,2	TETRAMETHYL DIHYDRONAPHTALENE Mw=186	0,23
127	59,3	GLEENOL	0,82
128	59,7	PHENOL, 2,4-DIMETHYL	0,20
129	60,0	CARYOPHYLLENOL	0,26
130	60,2	PHENOL, METHOXY TRIMETHYL ISOMER	0,21
131	60,5	Épi-CUBENOL	0,78
132	60,6	ACETYL METHOXYNAPHTALENE	0,53
133	60,8	CUBENOL	0,75
134	61,2	PHENOL, 2-ETHYL	0,16
135	61,5	PHENOL, 2,5-DIMETHYL	0,73
136	61,6	p-CRESOL	2,46
137	61,8	NAPHTALENE, METHYL-7-METHYLETHYL	0,18
138	62,0	PHENOL, 4-ETHYL-2-METHOXY	1,91
139	62,9	PHENOL, 2-METHOXY-4-PROPYL	1,53
140	63,3	CEDROL	0,15
141	63,9	PHENOLIC COMPOUND	0,10
142	64,2	NAPHTALENE, 2,3,6-TRIMETHYL	0,16
143	64,5	NAPHTALENE, METHYL-METHYLETHYL ISOMER	0,33
144	64,8	PHENOLIC COMPOUND	0,08
145	64,9	PHENOL,3,5-DIMETHYL-	0,28
146	65,7	EUGENOL	0,45
147	65,8	PHENOLIC COMPOUND	0,40
148	66,0	PHENOLIC COMPOUND	0,26
149	66,2	PHENOL, 3-ETHYL	1,12
150	66,5	NAPHTALENE, 1,4,5-TRIMETHYL	0,40

Disclaimer & Caution

Please refer to all relevant technical information specific to the product, prior to use. The information contained in this document is obtained from current and reliable sources. New Directions Aromatics Inc. provides the information contained herein, but makes no representation as to its comprehensiveness or accuracy. Individuals receiving this information must exercise their independent judgment in determining its appropriateness for a particular purpose. The user of the product is solely responsible for compliance with all laws and regulations applying to the use of the products, including intellectual property rights of third parties. As the ordinary or otherwise use(s) of this product is outside the control of New Directions Aromatics Inc., no representation or warranty, expressed or implied, is made as to the effect(s) of such use(s), (including damage or injury), or the results obtained. The liability of New Directions Aromatics Inc. is limited to the value of the goods and does not include any consequential loss. New Directions Aromatics Inc. shall not be liable for any errors or delays in the content, or for any actions taken in reliance thereon. New Directions Aromatics Inc. shall not be responsible for any damages resulting from use of or reliance upon this information. In the event of any dispute, the Customer hereby agrees that Jurisdiction is limited to the province of Ontario.

GCMS ANALYSIS (cont'd.)

PRODUCT NAME: CADE RECTIFIED ESSENTIAL OIL - 11293

Peak	RT (min)	Component name	%
151	66,8	PHENOLIC COMPOUND	0,47
152	67,3	delta-CADINOL	0,25
153	67,9	PHENOL ETHYL ISOMER	0,18
154	68,1	PHENOL TRIMETHYL ISOMER	0,37
155	68,5	CADALENE Mw=198	3,26
156	68,8	SESQUITERPENOL Mw=222	0,18
157	69,7	PHENOLIC COMPOUND	0,22
158	70,0	ISOEUGENOL ISOMER	0,37
159	70,3	PHENOL DIMETHOXY ISOMER	0,38
160	70,5	PHENOLIC COMPOUND	0,20
161	74,2	ISOEUGENOL	1,09
162	75,2	SESQUITERPENONE Mw=218	0,22
163	78,7	BENZENE, METHYL PHENYLMETHYL COMPOUND	0,15
164	79,0	ETHANONE, DIMETHOXYPHENYL ISOMER	0,18
165	80,6	PHENOL, DIMETHYLETHYL METHOXY ISOMER	0,44
166	91,9	METHOXY METHYLPHENOL ISOMER	0,10
167	83,5	AROMATIC COMPOUND	0,21
168	86,6	APOCYNIN Mw=166	0,15
169	87,4	HOMOVANILLIC ACID	0,42
170	89,2	AROMATIC COMPOUND	0,15
171	93,2	CALAMENOL Mw=218	0,08
172	96,5	AROMATIC COMPOUND	0,14
173	103,5	METHYL METHYL ANTHRANILATE	0,12
174	108,2	AROMATIC COMPOUND	0,10
		TOTAL	99,59

Disclaimer & Caution

Please refer to all relevant technical information specific to the product, prior to use. The information contained in this document is obtained from current and reliable sources. New Directions Aromatics Inc. provides the information contained herein, but makes no representation as to its comprehensiveness or accuracy. Individuals receiving this information must exercise their independent judgment in determining its appropriateness for a particular purpose. The user of the product is solely responsible for compliance with all laws and regulations applying to the use of the products, including intellectual property rights of third parties. As the ordinary or otherwise use(s) of this product is outside the control of New Directions Aromatics Inc., no representation or warranty, expressed or implied, is made as to the effect(s) of such use(s), (including damage or injury), or the results obtained. The liability of New Directions Aromatics Inc. is limited to the value of the goods and does not include any consequential loss. New Directions Aromatics Inc. shall not be liable for any errors or delays in the content, or for any actions taken in reliance thereon. New Directions Aromatics Inc. shall not be responsible for any damages resulting from use of or reliance upon this information. In the event of any dispute, the Customer hereby agrees that Jurisdiction is limited to the province of Ontario.