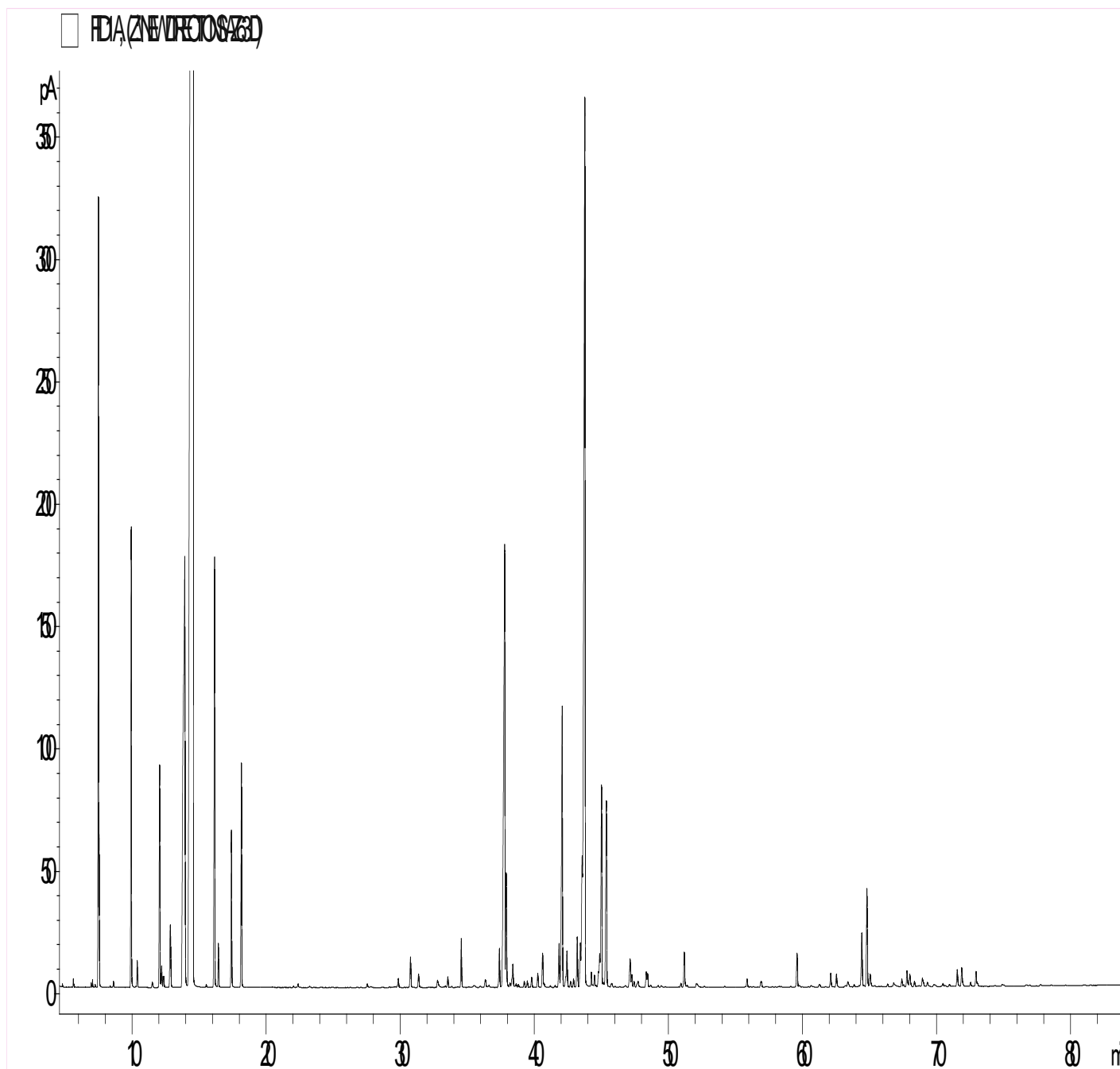


## GCMS ANALYSIS

PRODUCT NAME: CAJEPUT ESSENTIAL OIL – 11015

DATE: March 11, 2020



*Due to volume turnover, this report is not lot specific, It is representative of the quality of this oil produced by the manufacturer of this product, Specific lots may vary slightly as is the case in natural products,*

### GCMS ANALYSIS (cont'd.)

PRODUCT NAME: CAJEPUT ESSENTIAL OIL - 11015

Peak	RT (min)	Compound	%
1	4,81	ACETONE	0,01
2	5,62	BUTANAL, 2-METHYL-	0,03
3	5,64	ISOVALERALDEHYDE	0,01
4	6,95	DISOPROPYL KETONE	0,02
5	7,05	METHYL 2-METHYLBUTYRATE	0,03
6	7,49	<b>alpha-PINENE</b>	<b>3,01</b>
7	7,55	alpha-THUYENE	0,49
8	8,61	CAMPHENE	0,03
9	9,94	beta-PINENE	2,21
10	10,39	SABINENE	0,13
11	11,51	delta3-CARENE	0,03
12	12,06	beta-MYRCENE	1,26
13	12,20	alpha-PHELLANDRENE	0,14
14	12,36	psi-LIMONENE	0,07
15	12,86	alpha-TERPINENE	0,51
16	13,93	<b>LIMONENE</b>	<b>6,31</b>
17	14,57	<b>1,8-CINEOLE</b>	<b>52,29</b>
18	15,53	cis-beta-OCIMENE	0,01
19	16,16	gamma-TERPINENE	2,46
20	16,44	trans-beta-OCIMENE	0,22
21	17,40	p-CYMENE	0,82
22	18,15	TERPINOLENE	1,24
23	22,38	ROSE cis-OXIDE	0,03
24	27,53	alpha-p-DIMETHYLSTYRENE	0,03
25	27,79	MENTHATRIENE ISOMER	0,01
26	29,85	delta-ELEMENE	0,07
27	30,76	YLANGENE	0,22
28	31,36	alpha-COPAENE	0,10
29	32,78	BENZALDEHYDE	0,08
30	33,36	SATIVENE	0,01

#### Disclaimer & Caution

Please refer to all relevant technical information specific to the product, prior to use. The information contained in this document is obtained from current and reliable sources, New Directions Aromatics Inc, provides the information contained herein, but makes no representation as to its comprehensiveness or accuracy. Individuals receiving this information must exercise their independent judgment in determining its appropriateness for a particular purpose. The user of the product is solely responsible for compliance with all laws and regulations applying to the use of the products, including intellectual property rights of third parties. As the ordinary or otherwise use(s) of this product is outside the control of New Directions Aromatics Inc., no representation or warranty, expressed or implied, is made as to the effect(s) of such use(s), (including damage or injury), or the results obtained. The liability of New Directions Aromatics Inc, is limited to the value of the goods and does not include any consequential loss. New Directions Aromatics Inc, shall not be liable for any errors or delays in the content, or for any actions taken in reliance thereon. New Directions Aromatics Inc, shall not be responsible for any damages resulting from use of or reliance upon this information. In the event of any dispute, the Customer hereby agrees that Jurisdiction is limited to the province of Ontario.

### GCMS ANALYSIS (cont'd.)

PRODUCT NAME: CAJEPUT ESSENTIAL OIL - 11015

Peak	RT (min)	Compound	%
31	33,54	alpha-GURJUNENE	0,07
32	34,55	LINALOOL	0,29
33	35,50	DIMETHYL SULFOXIDE	0,02
34	35,56	METHYL CITRONNELLATE	0,01
35	36,34	SESQUITERPENE	0,07
36	36,62	ISOCARYOPHYLLENE	0,02
37	37,39	beta-ELEMENE	0,28
38	37,79	<b>beta-CARYOPHYLLENE</b>	<b>4,57</b>
39	37,91	TERPINENE-4-OL	0,76
40	38,18	SESQUITERPENE	0,03
41	38,35	AROMADENDRENE	0,06
42	38,39	6,9-GUAIADIENE	0,15
43	38,63	SESQUITERPENE	0,03
44	38,81	SESQUITERPENE	0,03
45	39,24	SESQUITERPENE	0,04
46	39,48	GURJUNENE ISOMER	0,05
47	39,80	CADINADIENE ISOMER	0,07
48	40,26	GERMACRENE A	0,10
49	40,62	ALLO-AROMADENDRENE	0,25
50	40,72	delta-TERPENYL ACETATE	0,02
51	41,19	gamma-GURJUNENE	0,01
52	41,55	ZONARENE	0,02
53	41,84	SESQUITERPENE	0,32
54	42,07	alpha-HUMULENE	2,20
55	42,36	SESQUITERPENE	0,07
56	42,43	gamma-SELINENE	0,27
57	42,70	4,5-di-epi-ARISTOLOCHENE	0,04
58	42,92	NERAL	0,05
59	43,20	gamma-MUUROLENE	0,36
60	43,43	CALARENE	0,30

#### Disclaimer & Caution

Please refer to all relevant technical information specific to the product, prior to use. The information contained in this document is obtained from current and reliable sources, New Directions Aromatics Inc, provides the information contained herein, but makes no representation as to its comprehensiveness or accuracy. Individuals receiving this information must exercise their independent judgment in determining its appropriateness for a particular purpose. The user of the product is solely responsible for compliance with all laws and regulations applying to the use of the products, including intellectual property rights of third parties. As the ordinary or otherwise use(s) of this product is outside the control of New Directions Aromatics Inc., no representation or warranty, expressed or implied, is made as to the effect(s) of such use(s), (including damage or injury), or the results obtained. The liability of New Directions Aromatics Inc, is limited to the value of the goods and does not include any consequential loss. New Directions Aromatics Inc, shall not be liable for any errors or delays in the content, or for any actions taken in reliance thereon. New Directions Aromatics Inc, shall not be responsible for any damages resulting from use of or reliance upon this information. In the event of any dispute, the Customer hereby agrees that Jurisdiction is limited to the province of Ontario.

### GCMS ANALYSIS (cont'd.)

PRODUCT NAME: CAJEPUT ESSENTIAL OIL - 11015

Peak	RT (min)	Compound	%
61	43,56	TERPENYL ACETATE	0,94
62	43,77	<b>alpha-TERPINEOL</b>	<b>8,94</b>
63	44,24	GURJUNENE ISOMER	0,08
64	44,48	EREMOPHILENE	0,07
65	44,78	SESQUITERPENE	0,09
66	44,87	SESQUITERPENE	0,22
67	45,01	beta-SELINENE	1,47
68	45,14	SESQUITERPENE	0,03
69	45,38	alpha-SELINENE	1,46
70	45,76	CARVONE	0,02
71	45,77	BICYCLOGERMACRENE	0,02
72	46,79	SESQUITERPENE	0,01
73	47,15	delta-CADINENE	0,24
74	47,28	gamma-CADINENE	0,09
75	47,44	7-epi-alpha-SELINENE	0,04
76	47,70	CITRONELLOL	0,02
77	47,75	delta-SELINENE	0,05
78	48,35	SESQUITERPENE	0,11
79	48,46	SELINADIENE ISOMER	0,09
80	48,69	CADINA-1,4-DIENE	0,02
81	49,24	alpha-AMORPHENE	0,01
82	49,47	SESQUITERPENE Mw=202	0,01
83	50,94	SELINENE ISOMER	0,03
84	51,19	GERMACRENE B	0,26
85	51,28	cis-CALAMENENE	0,01
86	51,41	trans-CALAMENENE	0,02
87	52,09	p-CYMENE-8-OL	0,02
88	52,16	GERANIOL	0,03
89	55,88	alpha-CALACORENE	0,06
90	56,92	PALUSTROL	0,06

#### Disclaimer & Caution

Please refer to all relevant technical information specific to the product, prior to use. The information contained in this document is obtained from current and reliable sources, New Directions Aromatics Inc, provides the information contained herein, but makes no representation as to its comprehensiveness or accuracy. Individuals receiving this information must exercise their independent judgment in determining its appropriateness for a particular purpose. The user of the product is solely responsible for compliance with all laws and regulations applying to the use of the products, including intellectual property rights of third parties. As the ordinary or otherwise use(s) of this product is outside the control of New Directions Aromatics Inc., no representation or warranty, expressed or implied, is made as to the effect(s) of such use(s), (including damage or injury), or the results obtained. The liability of New Directions Aromatics Inc, is limited to the value of the goods and does not include any consequential loss. New Directions Aromatics Inc, shall not be liable for any errors or delays in the content, or for any actions taken in reliance thereon. New Directions Aromatics Inc, shall not be responsible for any damages resulting from use of or reliance upon this information. In the event of any dispute, the Customer hereby agrees that Jurisdiction is limited to the province of Ontario.

### GCMS ANALYSIS (cont'd.)

PRODUCT NAME: CAJEPUT ESSENTIAL OIL – 11015

Peak	RT (min)	Compound	%
91	64,43	GLOBULOL	0,45
92	64,82	VIRIDIFLOROL	0,72
93	65,06	GUAIOL	0,09
94	65,12	SESQUITERPENOL	0,01
95	66,35	ROSIFOLIOL	0,02
96	66,80	SPATHULENOL	0,03
97	67,42	EUDESMOL ISOMER	0,06
98	67,55	CADINOL ISOMER	0,02
99	67,80	SESQUITERPENOL	0,13
100	68,01	beta-COPAEN-4-alpha-OL	0,12
101	68,36	EUGENOL	0,04
102	68,71	SESQUITERPENOL	0,01
103	68,95	gamma-EUDESMOL	0,06
104	69,00	T-CADINOL	0,03
105	69,32	AGAROSPIROL	0,03
106	69,82	SESQUITERPENOL	0,02
107	69,91	SESQUITERPENOL	0,01
108	70,48	alpha-MUUROLOL	0,02
109	70,65	SESQUITERPENOL	0,01
110	70,96	BULNESOL	0,02
111	64,43	GLOBULOL	0,45
112	64,82	VIRIDIFLOROL	0,72
113	65,06	GUAIOL	0,09
114	65,12	SESQUITERPENOL	0,01
115	66,35	ROSIFOLIOL	0,02
116	66,80	SPATHULENOL	0,03
117	67,42	EUDESMOL ISOMER	0,06
118	67,55	CADINOL ISOMER	0,02
119	67,80	SESQUITERPENOL	0,13
120	68,01	beta-COPAEN-4-alpha-OL	0,12

#### Disclaimer & Caution

Please refer to all relevant technical information specific to the product, prior to use. The information contained in this document is obtained from current and reliable sources. New Directions Aromatics Inc. provides the information contained herein, but makes no representation as to its comprehensiveness or accuracy. Individuals receiving this information must exercise their independent judgment in determining its appropriateness for a particular purpose. The user of the product is solely responsible for compliance with all laws and regulations applying to the use of the products, including intellectual property rights of third parties. As the ordinary or otherwise use(s) of this product is outside the control of New Directions Aromatics Inc., no representation or warranty, expressed or implied, is made as to the effect(s) of such use(s), (including damage or injury), or the results obtained. The liability of New Directions Aromatics Inc. is limited to the value of the goods and does not include any consequential loss. New Directions Aromatics Inc. shall not be liable for any errors or delays in the content, or for any actions taken in reliance thereon. New Directions Aromatics Inc. shall not be responsible for any damages resulting from use of or reliance upon this information. In the event of any dispute, the Customer hereby agrees that Jurisdiction is limited to the province of Ontario.

### GCMS ANALYSIS (cont'd.)

PRODUCT NAME: CAJEPUT ESSENTIAL OIL – 11015

Peak	RT (min)	Compound	%
121	71,54	alpha-EUDESOL	0,14
122	71,88	beta-EUDESOL	0,16
123	72,53	CITRONELIC ACID	0,03
124	72,95	EUDESMA-7(11)-EN-4-OL	0,12
125	73,06	beta-NOOTKATOL	0,02
126	74,34	LEPTOSPERMONE ISOMER Mw=266	0,01
127	74,90	CARYOPHYLLA-2,6-DIEN-5-alpha-OL	0,02
128	75,02	SESQUITERPENIC EPOXIDE	0,01
129	76,69	SESQUITERPENIC EPOXIDE	0,01
130	77,76	FARNESOL	0,02
		<b>TOTAL</b>	<b>99,97</b>

#### Disclaimer & Caution

Please refer to all relevant technical information specific to the product, prior to use. The information contained in this document is obtained from current and reliable sources, New Directions Aromatics Inc, provides the information contained herein, but makes no representation as to its comprehensiveness or accuracy. Individuals receiving this information must exercise their independent judgment in determining its appropriateness for a particular purpose. The user of the product is solely responsible for compliance with all laws and regulations applying to the use of the products, including intellectual property rights of third parties. As the ordinary or otherwise use(s) of this product is outside the control of New Directions Aromatics Inc., no representation or warranty, expressed or implied, is made as to the effect(s) of such use(s), (including damage or injury), or the results obtained. The liability of New Directions Aromatics Inc, is limited to the value of the goods and does not include any consequential loss. New Directions Aromatics Inc, shall not be liable for any errors or delays in the content, or for any actions taken in reliance thereon. New Directions Aromatics Inc, shall not be responsible for any damages resulting from use of or reliance upon this information. In the event of any dispute, the Customer hereby agrees that Jurisdiction is limited to the province of Ontario.