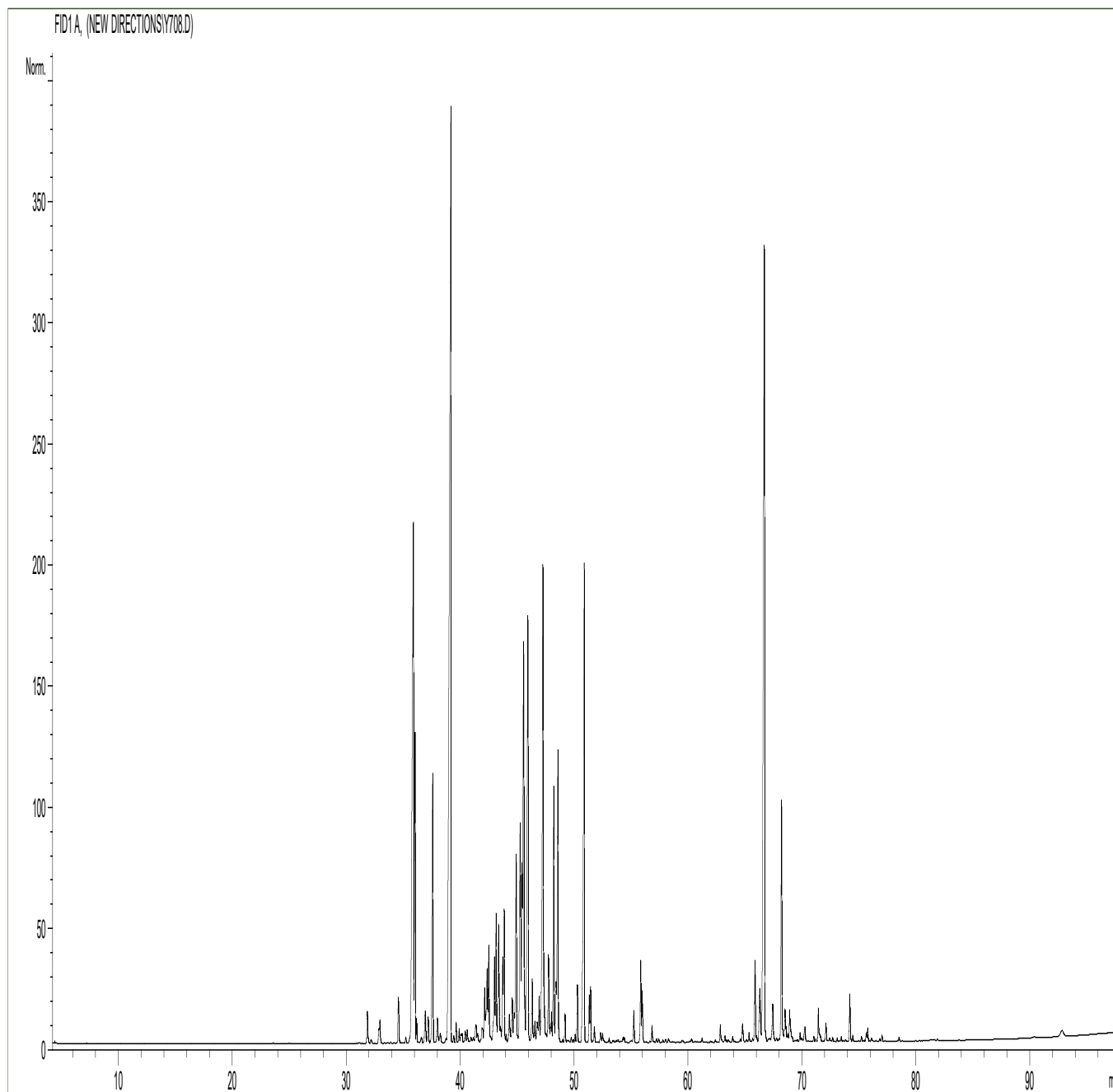


GCMS ANALYSIS

PRODUCT NAME: CEDARWOOD ESSENTIAL OIL (CHINESE) - 11023

DATE: August 21, 2019



Due to volume turnover, this report is not lot specific, It is representative of the quality of this oil produced by the manufacturer of this product, Specific lots may vary slightly as is the case in natural products,

GCMS ANALYSIS (cont'd.)

PRODUCT NAME: CEDARWOOD ESSENTIAL OIL (CHINESE) - 11023

Peak	RT (min)	Compound name	%
1	31,84	CEDRENE ISOMER	0,28
2	31,91	CEDRENE ISOMER	0,04
3	32,17	PENTADECANE	0,04
4	32,85	CEDRENE ISOMER	0,10
5	32,94	CEDRENE ISOMER	0,23
6	33,90	SESQUITERPENE	0,01
7	34,57	THUYOPSENE ISOMER	0,45
8	35,22	alpha-cis-BERGAMOTENE	0,05
9	35,89	alpha-CEDRENE	8,02
10	36,04	beta-FUNEBRENE	2,57
11	36,17	SESQUITERPENE	0,17
12	36,58	SESQUITERPENE	0,07
13	36,93	SELINADIENE ISOMER	0,37
14	37,10	SESQUITERPENE	0,03
15	37,19	beta-ELEMENE + gamma-MUUROLENE	0,23
16	37,59	beta-CEDRENE	3,00
17	38,00	delta-ELEMENE	0,28
18	38,25	METHYL THYMOL ETHER + SESQUITERPENE	0,12
19	38,75	HEXADECANE + SESQUITERPENE	0,05
20	39,18	THUYOPSENE	15,91
21	39,42	HIMACHALENE ISOMER	0,05
22	39,64	PREZIZA-7-ENE	0,16
23	39,91	AROMATIC COMPOUND	0,11
24	40,05	SESQUITERPENE	0,06
25	40,16	GURJUNENE ISOMER	0,09
26	40,43	ALLO-AROMADENDRENE	0,10
27	40,61	HIMACHALENE ISOMER	0,10
28	41,37	SESQUITERPENE + ZONARENE	0,24
29	41,52	SESQUITERPENE	0,08
30	41,91	alpha-HUMULENE	0,15

Disclaimer & Caution

Please refer to all relevant technical information specific to the product, prior to use. The information contained in this document is obtained from current and reliable sources. New Directions Aromatics Inc. provides the information contained herein, but makes no representation as to its comprehensiveness or accuracy. Individuals receiving this information must exercise their independent judgment in determining its appropriateness for a particular purpose. The user of the product is solely responsible for compliance with all laws and regulations applying to the use of the products, including intellectual property rights of third parties. As the ordinary or otherwise use(s) of this product is outside the control of New Directions Aromatics Inc., no representation or warranty, expressed or implied, is made as to the effect(s) of such use(s), (including damage or injury), or the results obtained. The liability of New Directions Aromatics Inc. is limited to the value of the goods and does not include any consequential loss. New Directions Aromatics Inc. shall not be liable for any errors or delays in the content, or for any actions taken in reliance thereon. New Directions Aromatics Inc. shall not be responsible for any damages resulting from use of or reliance upon this information. In the event of any dispute, the Customer hereby agrees that Jurisdiction is limited to the province of Ontario.

GCMS ANALYSIS (cont'd.)

PRODUCT NAME: CEDARWOOD ESSENTIAL OIL (CHINESE) - 11023

Peak	RT (min)	Compound name	%
31	41,97	SESQUITERPENE	0,09
32	42,14	gamma-CURCUMENE	0,53
33	42,36	GURJUNENE ISOMER	0,98
34	42,51	gamma-SELINENE	0,96
35	43,00	CURCUMENE ISOMER	0,97
36	43,15	HIMACHALENE ISOMER	1,16
37	43,37	gamma-MUUROLENE	1,32
38	43,54	SESQUITERPENE	0,14
39	43,73	CURCUMENE ISOMER	0,78
40	43,86	beta-CHAMIGRENE	1,18
41	44,02	SESQUITERPENE	0,07
42	44,31	beta-HIMACHALENE	0,35
43	44,57	CADINENE ISOMER	0,48
44	44,74	CADINENE ISOMER	0,28
45	44,92	beta-SELINENE	2,02
46	45,26	alpha-SELINENE	2,67
47	45,43	alpha-MUUROLENE	1,51
48	45,55	BICYCLOGERMACRENE	4,25
49	45,63	CHAMIGRENE ISOMER	0,34
50	45,93	HIMACHALENE ISOMER	5,05
51	46,32	CURCUMENE ISOMER	0,66
52	46,55	SESQUITERPENE Mw=202	0,22
53	46,74	HIMACHALENE ISOMER	0,19
54	46,79	SESQUITERPENE	0,08
55	46,93	SESQUITERPENE	0,41
56	47,26	delta-CADINENE	5,31
57	47,34	7-epi-alpha-SELINENE	0,39
58	47,75	SESQUITERPENE	0,94
59	47,95	SESQUITERPENE Mw=202	0,09
60	48,00	beta-SESQUIPELLANDRENE	0,26

Disclaimer & Caution

Please refer to all relevant technical information specific to the product, prior to use. The information contained in this document is obtained from current and reliable sources. New Directions Aromatics Inc. provides the information contained herein, but makes no representation as to its comprehensiveness or accuracy. Individuals receiving this information must exercise their independent judgment in determining its appropriateness for a particular purpose. The user of the product is solely responsible for compliance with all laws and regulations applying to the use of the products, including intellectual property rights of third parties. As the ordinary or otherwise use(s) of this product is outside the control of New Directions Aromatics Inc., no representation or warranty, expressed or implied, is made as to the effect(s) of such use(s), (including damage or injury), or the results obtained. The liability of New Directions Aromatics Inc. is limited to the value of the goods and does not include any consequential loss. New Directions Aromatics Inc. shall not be liable for any errors or delays in the content, or for any actions taken in reliance thereon. New Directions Aromatics Inc. shall not be responsible for any damages resulting from use of or reliance upon this information. In the event of any dispute, the Customer hereby agrees that Jurisdiction is limited to the province of Ontario.

GCMS ANALYSIS (cont'd.)

PRODUCT NAME: CEDARWOOD ESSENTIAL OIL (CHINESE) - 11023

Peak	RT (min)	Compound name	%
61	48,21	alpha-CURCUMENE	2,25
62	48,40	beta-BISABOLENE	0,56
63	48,58	HIMACHALENE ISOMER	3,02
64	49,20	alpha-AMORPHENE	0,24
65	49,74	AROMATIC COMPOUND	0,05
66	50,08	AROMATIC COMPOUND	0,07
67	50,29	ALIPHATIC ESTER	0,50
68	50,80	ALIPHATIC ESTER	0,80
69	50,89	CUPARENE	4,71
70	51,32	cis-CALAMENENE	0,38
71	51,44	trans-CALAMENENE	0,45
72	51,77	AROMATIC COMPOUND	0,14
73	52,31	AROMATIC COMPOUND	0,11
74	52,49	AROMATIC COMPOUND	0,08
75	53,07	COMPOUND Mw=220	0,03
76	54,28	AROMATIC COMPOUND	0,05
77	54,40	AROMATIC COMPOUND	0,03
78	55,23	COMPOUND Mw=173	0,29
79	55,84	COMPOUND Mw=188	0,70
80	55,97	alpha-CALACORENE	0,47
81	56,83	AROMATIC COMPOUND	0,14
82	57,24	AROMATIC COMPOUND	0,04
83	61,22	NAPHTHALENE,2,6-DIMETHYL	0,03
84	62,82	NEROLIDOL	0,15
85	63,24	AROMATIC COMPOUND	0,05
86	63,91	AROMATIC COMPOUND	0,06
87	64,78	ELEMOL	0,20
88	65,35	CEDROL ISOMER	0,07
89	65,88	SESQUITERPENOL	0,74
90	66,02	SESQUITERPENOL	0,04

Disclaimer & Caution

Please refer to all relevant technical information specific to the product, prior to use. The information contained in this document is obtained from current and reliable sources. New Directions Aromatics Inc. provides the information contained herein, but makes no representation as to its comprehensiveness or accuracy. Individuals receiving this information must exercise their independent judgment in determining its appropriateness for a particular purpose. The user of the product is solely responsible for compliance with all laws and regulations applying to the use of the products, including intellectual property rights of third parties. As the ordinary or otherwise use(s) of this product is outside the control of New Directions Aromatics Inc., no representation or warranty, expressed or implied, is made as to the effect(s) of such use(s), (including damage or injury), or the results obtained. The liability of New Directions Aromatics Inc. is limited to the value of the goods and does not include any consequential loss. New Directions Aromatics Inc. shall not be liable for any errors or delays in the content, or for any actions taken in reliance thereon. New Directions Aromatics Inc. shall not be responsible for any damages resulting from use of or reliance upon this information. In the event of any dispute, the Customer hereby agrees that Jurisdiction is limited to the province of Ontario.

GCMS ANALYSIS (cont'd.)

PRODUCT NAME: CEDARWOOD ESSENTIAL OIL (CHINESE) - 11023

Peak	RT (min)	Compound name	%
91	66,29	CEDROL ISOMER	0,72
92	66,69	CEDROL	10,68
93	66,76	SESQUITERPENIC EPOXIDE	0,09
94	67,42	SESQUITERPENOL	0,45
95	68,20	WIDDROL	2,11
96	68,27	SESQUITERPENOL	0,10
97	68,51	CEDROL ISOMER	0,27
98	68,60	CEDROL ISOMER	0,09
99	68,77	SESQUITERPENONE Mw=218	0,03
100	68,92	CEDROL ISOMER	0,22
101	68,97	SESQUITERPENOL	0,07
102	69,83	SESQUITERPENIC EPOXIDE	0,08
103	70,25	SESQUITERPENONE Mw=218	0,20
104	71,03	SESQUITERPENOL	0,04
105	71,43	alpha-BISABOLOL	0,28
106	71,54	SESQUITERPENIC EPOXIDE	0,05
107	71,64	SESQUITERPENIC EPOXIDE	0,04
108	72,10	AROMATIC COMPOUND	0,16
109	73,47	AROMATIC COMPOUND	0,04
110	74,22	AROMATIC COMPOUND	0,43
111	74,48	AROMATIC COMPOUND	0,05
112	75,24	SESQUITERPENONE Mw=218	0,04
113	75,66	AROMATIC COMPOUND	0,07
114	75,79	AROMATIC COMPOUND	0,11
115	77,04	SESQUITERPENOL	0,05
116	78,54	SESQUITERPENOL	0,04
117	92,86	AROMATIC COMPOUND	0,17
		TOTAL	100,00

Disclaimer & Caution

Please refer to all relevant technical information specific to the product, prior to use. The information contained in this document is obtained from current and reliable sources. New Directions Aromatics Inc. provides the information contained herein, but makes no representation as to its comprehensiveness or accuracy. Individuals receiving this information must exercise their independent judgment in determining its appropriateness for a particular purpose. The user of the product is solely responsible for compliance with all laws and regulations applying to the use of the products, including intellectual property rights of third parties. As the ordinary or otherwise use(s) of this product is outside the control of New Directions Aromatics Inc., no representation or warranty, expressed or implied, is made as to the effect(s) of such use(s), (including damage or injury), or the results obtained. The liability of New Directions Aromatics Inc. is limited to the value of the goods and does not include any consequential loss. New Directions Aromatics Inc. shall not be liable for any errors or delays in the content, or for any actions taken in reliance thereon. New Directions Aromatics Inc. shall not be responsible for any damages resulting from use of or reliance upon this information. In the event of any dispute, the Customer hereby agrees that Jurisdiction is limited to the province of Ontario.