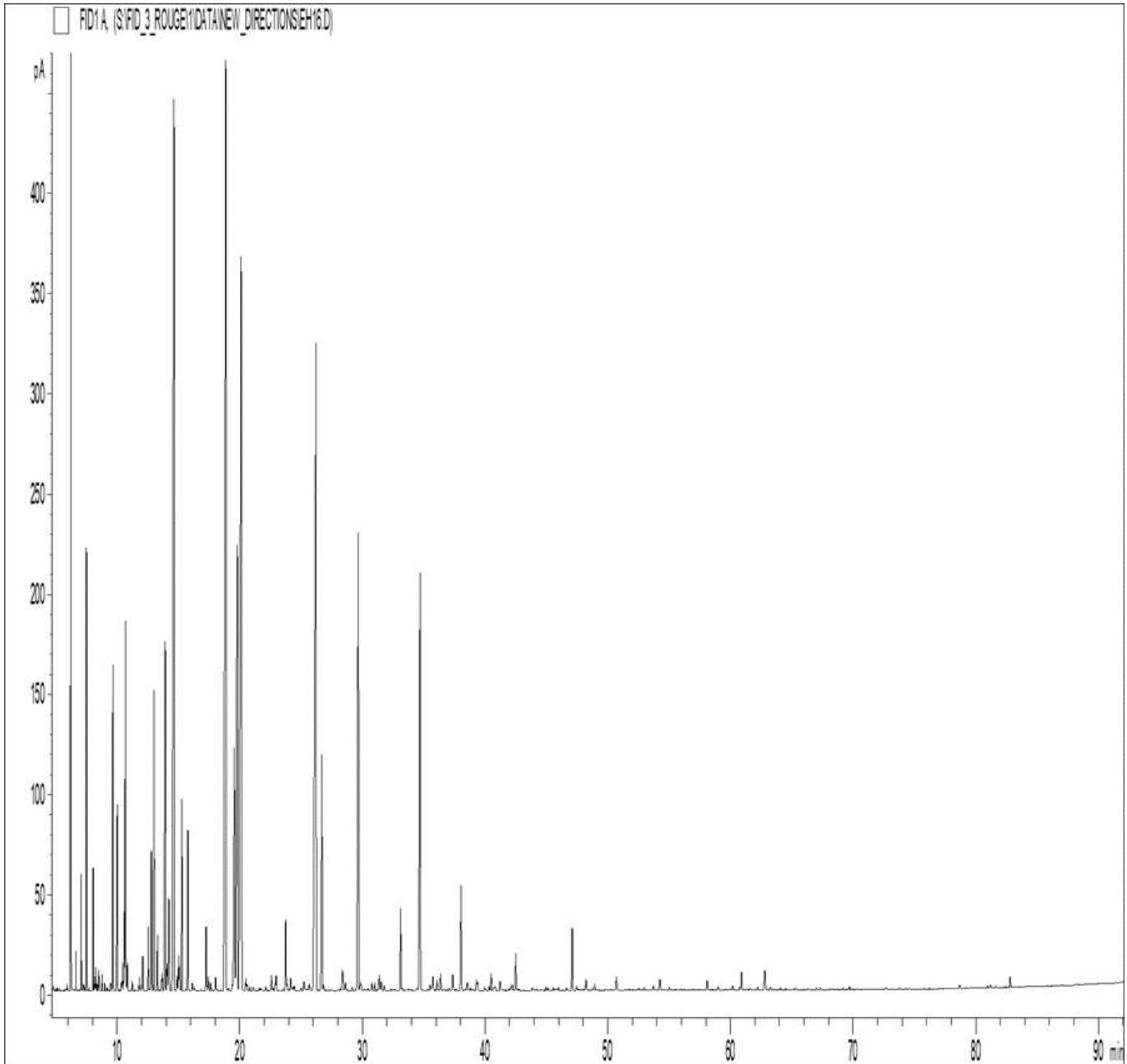


## GCMS ANALYSIS

PRODUCT NAME: CHAMOMILE ROMAN ESSENTIAL OIL -VERIFIED BY ECOCERT/COSMOS  
APPROVED- 11028  
DATE: April 20, 2021



*Due to volume turnover, this report is not lot specific, It is representative of the quality of this oil produced by the manufacturer of this product, Specific lots may vary slightly as is the case in natural products,*

GCMS ANALYSIS (cont'd.)

PRODUCT NAME: CHAMOMILE ROMAN ESSENTIAL OIL -VERIFIED BY ECOCERT/COSMOS APPROVED- 11028

Peak	RT (min)	COMPONENT name	%
1	5,92	ISOBUTYL ACETATE	0,02
2	<b>6,24</b>	<b>alpha-PINENE</b>	<b>5,43</b>
3	6,65	PROPYL ISOBUTYRATE	0,15
4	7,08	CAMPHENE	0,48
5	7,25	ISOBUTYL PROPIONATE	0,03
6	7,32	HEXANAL	0,03
7	7,51	<b>ISOBUTYL ISOBUTYRATE</b>	<b>1,84</b>
8	8,05	beta-PINENE	0,57
9	8,18	METHYL ANGELATE	0,03
10	8,25	2-METHYL-1-BUTANOL ACETATE	0,15
11	8,36	SABINENE	0,04
12	8,46	ALIPHATIC ESTER	0,03
13	8,52	PROPYL 2-METHYL-2-PROPENOATE	0,10
14	8,78	PROPYL 2-METHYLBUTYRATE	0,08
15	8,99	BUTYL ISOBUTYRATE	0,04
16	9,48	ALIPHATIC ESTER	0,04
17	9,51	ALIPHATIC ALCOHOL	0,03
18	9,66	<b>ISOBUTYL METHACRYLATE</b>	<b>1,69</b>
19	10,00	PENTANE, 3,3-DIMETHYL-	0,57
20	10,03	ISOBUTYL 2-METHYLBUTYRATE	1,19
21	10,38	2-PENTYL PROPIONATE	0,07
22	10,47	ISOBUTYL ISOVALERATE	0,16
23	10,59	AMYL ISOBUTYRATE	0,49
24	10,70	<b>ISOAMYL ISOBUTYRATE</b>	<b>2,15</b>
25	10,77	LIMONENE	0,04
26	10,86	1,8-CINEOLE	0,15
27	11,24	ALIPHATIC ESTER	0,06
28	11,82	BUTYL METHACRYLATE	0,08
29	11,95	FURAN, 2-PENTYL-	0,04
30	12,10	ALIPHATIC ESTER	0,23

**Disclaimer & Caution:**

Please refer to all relevant technical information specific to the product, prior to use, The information contained in this document is obtained from current and reliable sources, New Directions Aromatics Inc, provides the information contained herein, but makes no representation as to its comprehensiveness or accuracy, Individuals receiving this information must exercise their independent judgment in determining its appropriateness for a particular purpose, The user of the product is solely responsible for compliance with all laws and regulations applying to the use of the products, including intellectual property rights of third parties, As the ordinary or otherwise use(s) of this product is outside the control of New Directions Aromatics Inc., no representation or warranty, expressed or implied, is made as to the effect(s) of such use(s), (including damage or injury), or the results obtained, The liability of New Directions Aromatics Inc, is limited to the value of the goods and does not include any consequential loss, New Directions Aromatics Inc, shall not be liable for any errors or delays in the content, or for any actions taken in reliance thereon, New Directions Aromatics Inc, shall not be responsible for any damages resulting from use of or reliance upon this information, In the event of any dispute, the Customer hereby agrees that Jurisdiction is limited to the province of Ontario,

GCMS ANALYSIS (cont'd.)

PRODUCT NAME: CHAMOMILE ROMAN ESSENTIAL OIL -VERIFIED BY ECOCERT/COSMOS APPROVED- 11028

Peak	RT (min)	COMPONENT name	%
31	12,54	PRENYL ACETATE	0,38
32	12,82	ISOPROPYL ANGELATE	0,91
33	13,02	ALLYL METHACRYLATE	1,85
34	13,30	3-HEPTANONE, 2,6-DIMETHYL-	0,35
35	13,62	p-CYMENE	0,07
36	13,68	3-PENTEN-2-OL	0,13
37	13,93	<b>2-METHYLBUTYL METHACRYLATE</b>	<b>2,97</b>
38	14,08	2-METHYLBUTYL 2-METHYLBUTYRATE	0,24
39	14,23	ISOAMYL 2-METHYLBUTYRATE	0,87
40	14,64	<b>ISOBUTYL ANGELATE</b>	<b>10,02</b>
41		<b>ISOAMYL METHACRYLATE</b>	
42	14,91	AMYL ISOVALERATE	0,12
43	15,03	ISOBUTYL CAPROATE	0,25
44	15,10	ALIPHATIC ESTER	0,16
45	15,29	HEXYL ISOBUTYRATE	1,38
46	15,78	ISOPRENYL ISOVALERATE	1,10
47	16,14	1-PENTANOL, 3-METHYL-	0,07
48	16,30	ALIPHATIC ESTER	0,03
49	17,27	BUTYL ANGELATE	0,47
50	17,43	ALIPHATIC ESTER	0,11
51	17,64	ISOBUTYL TIGLATE ISOMERE	0,06
52	18,04	ISOBUTYL TIGLATE	0,12
53	18,87	<b>METHALLYL ANGELATE</b>	<b>11,90</b>
54	19,12	ALIPHATIC ESTER	0,03
55	19,40	ALIPHATIC ESTER	0,06
56	19,57	<b>3-METHYLPENTYL METHACRYLATE</b>	<b>2,80</b>
57	19,82	<b>ISOAMYL ANGELATE</b>	<b>5,93</b>
58	20,12	<b>2-METHYLBUTYL ANGELATE</b>	<b>10,11</b>
59	20,51	2-METHYLBUTYLE CAPROATE	0,11
60	20,59	ALIPHATIC ESTER	0,06

**Disclaimer & Caution:**

Please refer to all relevant technical information specific to the product, prior to use. The information contained in this document is obtained from current and reliable sources. New Directions Aromatics Inc. provides the information contained herein, but makes no representation as to its comprehensiveness or accuracy. Individuals receiving this information must exercise their independent judgment in determining its appropriateness for a particular purpose. The user of the product is solely responsible for compliance with all laws and regulations applying to the use of the products, including intellectual property rights of third parties. As the ordinary or otherwise use(s) of this product is outside the control of New Directions Aromatics Inc., no representation or warranty, expressed or implied, is made as to the effect(s) of such use(s), (including damage or injury), or the results obtained. The liability of New Directions Aromatics Inc. is limited to the value of the goods and does not include any consequential loss. New Directions Aromatics Inc. shall not be liable for any errors or delays in the content, or for any actions taken in reliance thereon. New Directions Aromatics Inc. shall not be responsible for any damages resulting from use of or reliance upon this information. In the event of any dispute, the Customer hereby agrees that Jurisdiction is limited to the province of Ontario.

GCMS ANALYSIS (cont'd.)

PRODUCT NAME: CHAMOMILE ROMAN ESSENTIAL OIL -VERIFIED BY ECOCERT/COSMOS APPROVED- 11028

Peak	RT (min)	COMPONENT name	%
61	20,82	ALIPHATIC ESTER	0,03
62	21,09	endo-ISOPINOCAMPHONE	0,03
63	21,61	ALIPHATIC ESTER	0,03
64	21,72	ALIPHATIC ESTER	0,03
65	22,13	ARTEMISIA KETONE ISOMERE	0,04
66	22,60	HEXYL ANGELATE	0,14
67	22,74	ALIPHATIC ESTER	0,02
68	22,89	1-OCTEN-3-OL	0,06
69	22,98	ALIPHATIC ESTER	0,13
70	23,55	ALIPHATIC ESTER	0,02
71	23,76	ARTEMISIA KETONE	0,59
72	23,87	ALIPHATIC ESTER	0,06
73	24,16	ALIPHATIC ESTER	0,13
74	24,34	SILPHINENE	0,04
75	24,48	METHYLPENTYL METHACRYLATE ISOMER	0,05
76	25,01	SESQUITERPENE	0,03
77	25,23	alpha-CAMPHOLENAL	0,12
78	25,67	alpha-COPAENE	0,03
79	25,68	ALIPHATIC ESTER	0,06
80	26,23	<b>METHYLAMYL ANGELATE</b>	<b>10,97</b>
81	26,70	METHYLPENTYL METHACRYLATE	2,19
82	26,82	ALIPHATIC ESTER	0,05
83	28,05	ALIPHATIC ESTER	0,02
84	28,21	ALIPHATIC ESTER	0,02
85	28,38	beta-PINOCAMPHONE	0,26
86	28,64	HEXYL ANGELATE ISOMER	0,08
87	29,19	LINALYL ACETATE	0,04
88	29,67	<b>PINOCARVONE</b>	<b>4,94</b>
89	29,85	ALIPHATIC ESTER	0,08
90	29,88	BORNYL ACETATE	0,06

**Disclaimer & Caution:**

Please refer to all relevant technical information specific to the product, prior to use. The information contained in this document is obtained from current and reliable sources. New Directions Aromatics Inc. provides the information contained herein, but makes no representation as to its comprehensiveness or accuracy. Individuals receiving this information must exercise their independent judgment in determining its appropriateness for a particular purpose. The user of the product is solely responsible for compliance with all laws and regulations applying to the use of the products, including intellectual property rights of third parties. As the ordinary or otherwise use(s) of this product is outside the control of New Directions Aromatics Inc., no representation or warranty, expressed or implied, is made as to the effect(s) of such use(s), (including damage or injury), or the results obtained. The liability of New Directions Aromatics Inc. is limited to the value of the goods and does not include any consequential loss. New Directions Aromatics Inc. shall not be liable for any errors or delays in the content, or for any actions taken in reliance thereon. New Directions Aromatics Inc. shall not be responsible for any damages resulting from use of or reliance upon this information. In the event of any dispute, the Customer hereby agrees that Jurisdiction is limited to the province of Ontario.

GCMS ANALYSIS (cont'd.)

PRODUCT NAME: CHAMOMILE ROMAN ESSENTIAL OIL -VERIFIED BY ECOCERT/COSMOS APPROVED- 11028

Peak	RT (min)	COMPONENT name	%
91	30,18	ALIPHATIC ESTER	0,04
92	30,48	ALIPHATIC ESTER	0,03
93	30,79	ALIPHATIC ESTER	0,08
94	31,03	ALIPHATIC ESTER	0,07
95	31,38	HYDRATE DE CAMPHENE	0,15
96	31,53	beta-CARYOPHYLLENE	0,10
97	31,77	TERPINENE-4-OL	0,07
98	33,11	MYRTENAL	0,75
99	33,25	SESQUITERPENE	0,03
100	33,65	cis-p-2,8-MENTHADIEN-1-OL	0,02
101	33,78	ACETATE DE cis-PINOCARVYLE	0,02
102	33,94	ALIPHATIC ESTER	0,02
103	34,46	cis-VERBENOL	0,04
104	34,70	<b>trans-PINOCARVEOL</b>	<b>4,18</b>
105	35,53	ALIPHATIC ESTER	0,05
106	35,75	trans-VERBENOL	0,17
107	36,09	ALIPHATIC ESTER	0,10
108	36,37	E-beta-FARNESENE	0,17
109	37,05	SESQUITERPENE	0,02
110	37,36	BORNEOL	0,17
111	38,05	GERMACRENE D	1,08
112	38,53	beta-SELINENE	0,09
113	38,79	SESQUITERPENE	0,03
114	38,95	cis-p-MENTHA-1,2-DIEN-8-OL	0,03
115	39,29	SESQUITERPENE	0,11
116	39,38	BICYCLOGERMACRENE	0,08
117	39,95	SESQUITERPENE Mw=202	0,04
118	40,32	ALIPHATIC ALCOHOL	0,04
119	40,49	E,E-alpha-FARNESENE	0,16
120	40,73	ALIPHATIC ESTER	0,05

**Disclaimer & Caution:**

Please refer to all relevant technical information specific to the product, prior to use, The information contained in this document is obtained from current and reliable sources, New Directions Aromatics Inc, provides the information contained herein, but makes no representation as to its comprehensiveness or accuracy, Individuals receiving this information must exercise their independent judgment in determining its appropriateness for a particular purpose, The user of the product is solely responsible for compliance with all laws and regulations applying to the use of the products, including intellectual property rights of third parties, As the ordinary or otherwise use(s) of this product is outside the control of New Directions Aromatics Inc., no representation or warranty, expressed or implied, is made as to the effect(s) of such use(s), (including damage or injury), or the results obtained, The liability of New Directions Aromatics Inc, is limited to the value of the goods and does not include any consequential loss, New Directions Aromatics Inc, shall not be liable for any errors or delays in the content, or for any actions taken in reliance thereon, New Directions Aromatics Inc, shall not be responsible for any damages resulting from use of or reliance upon this information, In the event of any dispute, the Customer hereby agrees that Jurisdiction is limited to the province of Ontario,

GCMS ANALYSIS (cont'd.)

PRODUCT NAME: CHAMOMILE ROMAN ESSENTIAL OIL -VERIFIED BY ECOCERT/COSMOS APPROVED- 11028

Peak	RT (min)	COMPONENT name	%
121	40,83	ALIPHATIC ESTER	0,05
122	41,21	PHENYLMETHYL 2-METHYLPROPIONATE	0,10
123	42,09	CUMINAL	0,05
124	42,22	ALIPHATIC ESTER	0,06
125	42,50	MYRTENOL	0,34
126	43,86	COMPOUND Mw=152	0,03
127	44,97	SESQUITERPENE	0,04
128	45,15	COMPOUND Mw=164	0,03
129	45,55	TERPENIC ACETATE	0,03
130	45,78	AROMATIC COMPOUND	0,02
131	46,00	ALIPHATIC ALCOHOL	0,04
132	46,62	E-GERANYL ACETONE	0,03
133	47,11	2-HYDROXY-2-METHYLBUT-3-ENYL ANGELATE	0,56
134	47,45	ALIPHATIC ESTER	0,05
135	48,23	GERANYL METHYLBUTYRATE	0,11
136	48,93	beta-IONONE	0,06
137	49,83	ALIPHATIC ESTER	0,03
138	50,71	PHYTYL ACETATE	0,14
139	52,96	ALIPHATIC ESTER	0,04
140	53,70	ALIPHATIC ALCOHOL	0,05
141	54,24	COMPOUND Mw=172	0,13
142	55,03	ALIPHATIC ESTER	0,04
143	55,89	SESQUITERPENIC EPOXYDE	0,03
144	58,10	COMPOUND Mw=166	0,10
145	59,00	SPATHULENOL	0,04
146	60,21	BISABOLOL B OXIDE	0,05
147	60,75	SESQUITERPENOL	0,03
148	60,91	PENTADECANONE, TRIMETHYL-	0,18
149	61,60	SESQUITERPENOL	0,03
150	62,22	SESQUITERPENOL	0,03

**Disclaimer & Caution:**

Please refer to all relevant technical information specific to the product, prior to use, The information contained in this document is obtained from current and reliable sources, New Directions Aromatics Inc, provides the information contained herein, but makes no representation as to its comprehensiveness or accuracy, Individuals receiving this information must exercise their independent judgment in determining its appropriateness for a particular purpose, The user of the product is solely responsible for compliance with all laws and regulations applying to the use of the products, including intellectual property rights of third parties, As the ordinary or otherwise use(s) of this product is outside the control of New Directions Aromatics Inc., no representation or warranty, expressed or implied, is made as to the effect(s) of such use(s), (including damage or injury), or the results obtained, The liability of New Directions Aromatics Inc, is limited to the value of the goods and does not include any consequential loss, New Directions Aromatics Inc, shall not be liable for any errors or delays in the content, or for any actions taken in reliance thereon, New Directions Aromatics Inc, shall not be responsible for any damages resulting from use of or reliance upon this information, In the event of any dispute, the Customer hereby agrees that Jurisdiction is limited to the province of Ontario,

GCMS ANALYSIS (cont'd.)

PRODUCT NAME: CHAMOMILE ROMAN ESSENTIAL OIL -VERIFIED BY ECOCERT/COSMOS APPROVED- 11028

Peak	RT (min)	COMPONENT name	%
151	62,81	EUDESMA-5-EN-11-alpha-OL	0,25
152	63,27	AROMATIC COMPOUND Mw=290	0,04
153	64,07	AROMATIC COMPOUND	0,02
154	65,27	SESQUITERPENIC EPOXIDE	0,02
155	66,35	AROMATIC COMPOUND	0,02
156	67,01	SESQUITERPENIC EPOXIDE	0,02
157	67,32	SESQUITERPENIC EPOXIDE	0,02
158	69,69	AROMATIC COMPOUND	0,03
159	72,66	TRICOSANE	0,02
160	78,69	COMPOUND Mw=184	0,04
161	81,19	AROMATIC COMPOUND	0,03
162	82,81	<b>PHYTOL</b>	<b>0,11</b>
		<b>TOTAL</b>	<b>100,00</b>

**Disclaimer & Caution:**

Please refer to all relevant technical information specific to the product, prior to use, The information contained in this document is obtained from current and reliable sources, New Directions Aromatics Inc, provides the information contained herein, but makes no representation as to its comprehensiveness or accuracy, Individuals receiving this information must exercise their independent judgment in determining its appropriateness for a particular purpose, The user of the product is solely responsible for compliance with all laws and regulations applying to the use of the products, including intellectual property rights of third parties, As the ordinary or otherwise use(s) of this product is outside the control of New Directions Aromatics Inc., no representation or warranty, expressed or implied, is made as to the effect(s) of such use(s), (including damage or injury), or the results obtained, The liability of New Directions Aromatics Inc, is limited to the value of the goods and does not include any consequential loss, New Directions Aromatics Inc, shall not be liable for any errors or delays in the content, or for any actions taken in reliance thereon, New Directions Aromatics Inc, shall not be responsible for any damages resulting from use of or reliance upon this information, In the event of any dispute, the Customer hereby agrees that Jurisdiction is limited to the province of Ontario,