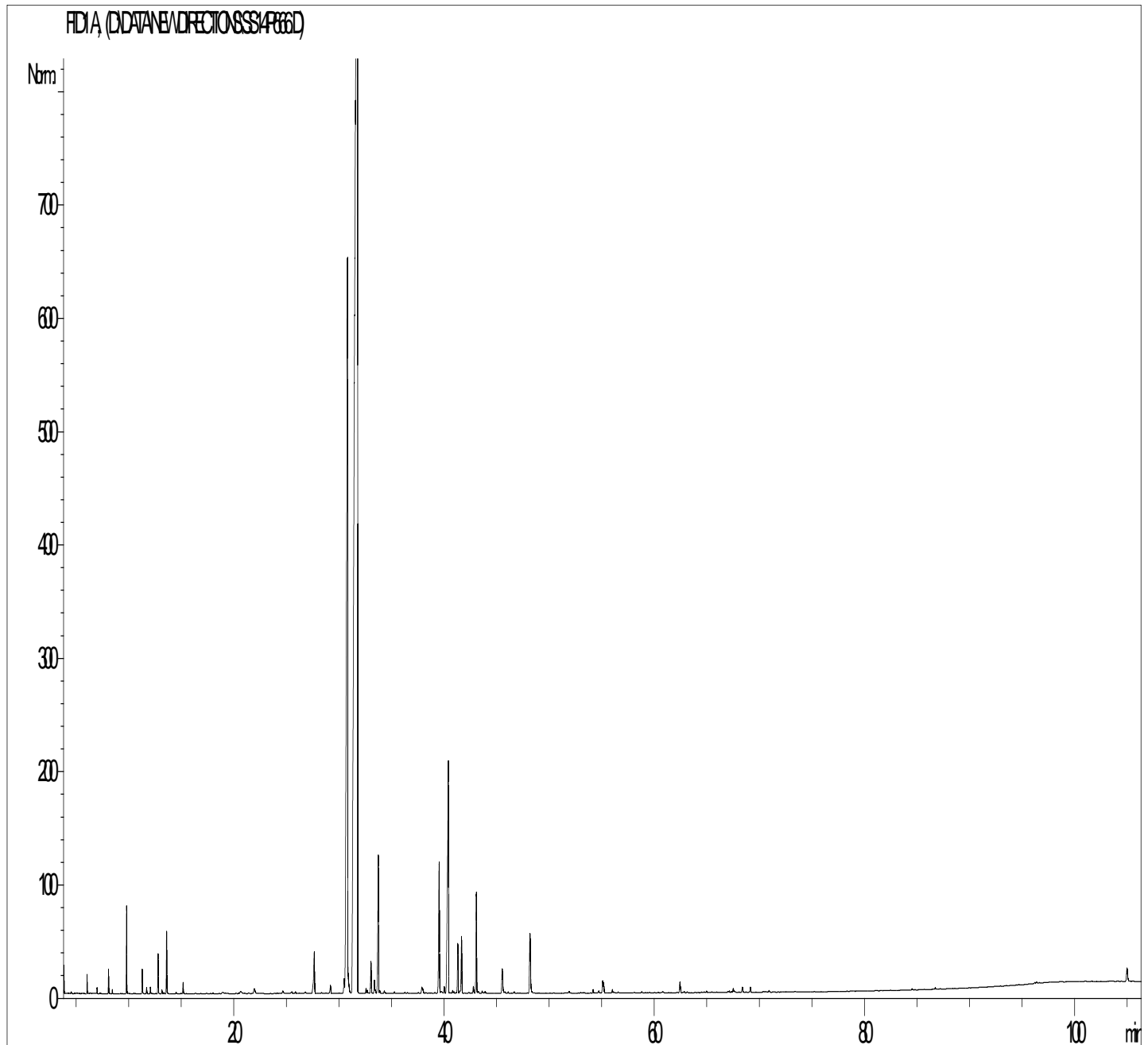




GCMS ANALYSIS

PRODUCT NAME: CLARY SAGE ORGANIC ESSENTIAL OIL - 50066

DATE: February 9, 2018



Due to volume turnover, this report is not lot specific. It is representative of the quality of this oil produced by the manufacturer of this product. Specific lots may vary slightly as is the case in natural products.

GCMS ANALYSIS (cont'd.)
PRODUCT NAME: CLARY SAGE ORGANIC ESSENTIAL OIL - 50066

Peak	RT (min)	Compound name	%
1	3,8	ACETONE	0,11
2	4,5	BUTANAL-2-METHYL	0,01
3	4,6	ISOVALERALDEHYDE	0,01
4	4,9	FURAN-2-ETHYL	0,01
5	6,0	alpha-PINENE	0,11
6	7,0	CAMPHENE	0,04
7	8,1	beta-PINENE	0,17
8	8,4	SABINENE	0,03
9	9,8	beta-MYRCENE	0,65
10	10,0	alpha-PHELLANDRENE	0,01
11	10,5	alpha-TERPINENE	0,01
12	11,3	LIMONENE	0,21
13	11,6	beta-PHELLANDRENE	0,01
14	11,7	Cis-ARBUSCULON	0,05
15	12,0	2-HEXENAL	0,05
16	12,8	Cis-beta-OCIMENE	0,35
17	13,1	Trans-ARBUSCULON	0,03
18	13,3	gamma-TERPINENE	0,01
19	13,6	Trans-beta-OCIMENE	0,56
20	14,5	p-CYMENE	0,01
21	15,2	TERPINOLENE	0,11
22	18,0	5-HEPTEN-2-ONE, 6-METHYL-	0,01
23	18,9	1-HEXANOL	0,10
24	20,2	1-PENTANOL-4-METHYL	0,01
25	20,5	FENCHONE	0,01
26	21,3	NONANAL	0,08
27	21,3	2-HEXEN-1-OL	0,01
28	21,9	HEXENYLIC ESTER	0,12
29	24,1	Cis-LINALOOL OXIDE	0,01
30	24,6	1-OCTEN-3-OL	0,05

Disclaimer & Caution:

Please refer to all relevant technical information specific to the product, prior to use. The information contained in this document is obtained from current and reliable sources. New Directions Aromatics Inc. provides the information contained herein, but makes no representation as to its comprehensiveness or accuracy. Individuals receiving this information must exercise their independent judgment in determining its appropriateness for a particular purpose. The user of the product is solely responsible for compliance with all laws and regulations applying to the use of the products, including intellectual property rights of third parties. As the ordinary or otherwise use(s) of this product is outside the control of New Directions Aromatics Inc., no representation or warranty, expressed or implied, is made as to the effect(s) of such use(s), (including damage or injury), or the results obtained. The liability of New Directions Aromatics Inc. is limited to the value of the goods and does not include any consequential loss. New Directions Aromatics Inc. shall not be liable for any errors or delays in the content, or for any actions taken in reliance thereon. New Directions Aromatics Inc. shall not be responsible for any damages resulting from use of or reliance upon this information. In the event of any dispute, the Customer hereby agrees that Jurisdiction is limited to the province of Ontario.

GCMS ANALYSIS (cont'd.)
PRODUCT NAME: CLARY SAGE ORGANIC ESSENTIAL OIL - 50066

Peak	RT (min)	Compound name	%
31	25,5	alpha-CUBEBENE	0,04
32	25,8	NERYL EPOXIDE	0,02
33	26,7	BICYCLOELEMENE	0,04
34	27,6	alpha-COPAENE	0,74
35	28,3	CAMPHOR	0,01
36	28,7	alpha-BOURBONENE	0,01
37	29,2	beta-BOURBONENE	0,12
38	30,5	beta1-CUBEBENE	0,20
39	30,8	LINALOOL	15,97
40	31,7	LINALYL ACETATE	64,33
41	32,5	epsilon-CADINENE	0,05
42	32,6	BORNYL ACETATE	0,03
43	33,0	EPOXYLINALYL ACETATE	0,39
44	33,3	beta-ELEMENE	0,15
45	33,4	beta-CUBEBENE	0,04
46	33,7	beta-CARYOPHYLLENE	1,91
47	33,9	TERPINENE-4-OL	0,03
48	34,3	HOTRIENOL	0,04
49	35,2	ALIPHATIC ESTER	0,02
50	36,2	CADINENE ISOMERE	0,02
51	36,5	SESQUITERPENE	0,02
52	37,5	ZONARENE	0,01
53	37,8	alpha-HUMULENE	0,09
54	37,9	NERYL FORMIATE	0,08
55	39,1	gamma-MUUROLENE	0,02
56	39,5	alpha-TERPINEOL	1,97
57	39,7	TERPENYL ACETATE	0,05
58	40,0	GERANYL ACETATE	0,08
59	40,4	GERMACRENE D	4,59
60	40,8	EREMOPHILENE	0,04

Disclaimer & Caution:

Please refer to all relevant technical information specific to the product, prior to use. The information contained in this document is obtained from current and reliable sources. New Directions Aromatics Inc. provides the information contained herein, but makes no representation as to its comprehensiveness or accuracy. Individuals receiving this information must exercise their independent judgment in determining its appropriateness for a particular purpose. The user of the product is solely responsible for compliance with all laws and regulations applying to the use of the products, including intellectual property rights of third parties. As the ordinary or otherwise use(s) of this product is outside the control of New Directions Aromatics Inc., no representation or warranty, expressed or implied, is made as to the effect(s) of such use(s), (including damage or injury), or the results obtained. The liability of New Directions Aromatics Inc. is limited to the value of the goods and does not include any consequential loss. New Directions Aromatics Inc. shall not be liable for any errors or delays in the content, or for any actions taken in reliance thereon. New Directions Aromatics Inc. shall not be responsible for any damages resulting from use of or reliance upon this information. In the event of any dispute, the Customer hereby agrees that Jurisdiction is limited to the province of Ontario.

GCMS ANALYSIS (cont'd.)
PRODUCT NAME: CLARY SAGE ORGANIC ESSENTIAL OIL - 50066

Peak	RT (min)	Compound name	%
61	40,9	beta-SELINENE	0,02
62	41,1	alpha-SELINENE	0,01
63	41,3	NERYL ACETATE	0,59
64	41,5	alpha-MUUROLENE	0,04
65	41,6	BICYCLOGERMACRENE	0,73
66	42,4	ALIPHATIC ALCOHOL	0,02
67	42,8	alpha-FARNESENE	0,09
68	43,0	GERANYL ACETATE	1,06
69	43,1	delta-CADINENE	0,20
70	43,2	METHYL SALICYLATE	0,03
71	43,6	HEXENYLIC ESTER	0,03
72	43,9	alpha-DIHYDRO-AGAROFURAN	0,03
73	45,5	NEROL	0,42
74	45,7	Cis-EPOXYLINALYL ACETATE	0,03
75	46,1	Trans- EPOXYLINALYL ACETATE	0,02
76	46,6	2,6-DIMETHYL-3,5,7-OCTATRIENE-2-OL, E,E-	0,02
77	48,2	GERANIOL	1,11
78	51,9	HEXENYLIC ESTER	0,03
79	53,0	3,7-OCTADIENE-2,6-DIOL, 2,6-DIMETHYL-	0,01
80	54,2	HENENYLIC ESTER	0,04
81	54,7	ISOCARYOPHYLLENE OXIDE	0,03
82	55,0	TERPENIC COMPOUND	0,15
83	55,2	CARYOPHYLLENE OXIDE	0,13
84	56,0	SESQUITERPENIC EPOXIDE	0,07
85	56,6	ALIPHATIC ALCOHOL	0,02
86	58,8	GERMACRA-1,5-DIEN-4-OL	0,03
87	60,8	SESQUITERPENIC EPOXIDE	0,02
88	62,4	SPATHULENOL	0,19
89	62,7	SESQUITERPENIC EPOXIDE	0,01
90	62,8	SABINENE 7-épi-trans-HYDRATE	0,04

Disclaimer & Caution:

Please refer to all relevant technical information specific to the product, prior to use. The information contained in this document is obtained from current and reliable sources. New Directions Aromatics Inc. provides the information contained herein, but makes no representation as to its comprehensiveness or accuracy. Individuals receiving this information must exercise their independent judgment in determining its appropriateness for a particular purpose. The user of the product is solely responsible for compliance with all laws and regulations applying to the use of the products, including intellectual property rights of third parties. As the ordinary or otherwise use(s) of this product is outside the control of New Directions Aromatics Inc., no representation or warranty, expressed or implied, is made as to the effect(s) of such use(s), (including damage or injury), or the results obtained. The liability of New Directions Aromatics Inc. is limited to the value of the goods and does not include any consequential loss. New Directions Aromatics Inc. shall not be liable for any errors or delays in the content, or for any actions taken in reliance thereon. New Directions Aromatics Inc. shall not be responsible for any damages resulting from use of or reliance upon this information. In the event of any dispute, the Customer hereby agrees that Jurisdiction is limited to the province of Ontario.

GCMS ANALYSIS (cont'd.)

PRODUCT NAME: CLARY SAGE ORGANIC ESSENTIAL OIL - 50066

Peak	RT (min)	Compound name	%
91	63,1	SESQUITERPENOL	0,02
92	65,0	beta-SPRINGENE	0,02
93	67,1	SESQUITERPENOL	0,02
94	67,3	alpha-EUDESMOL	0,02
95	67,3	ISOSPATHULENOL	0,01
96	67,5	beta-EUDESMOL	0,06
97	67,6	alpha-CADINOL	0,02
98	68,4	SCLAREOL OXIDE	0,08
99	69,1	SESQUITERPENIC EPOXIDE	0,07
100	70,9	GERANYL-p-CYMENE	0,03
101	84,5	BENZYL BENZOATE	0,02
102	86,7	MANOOL	0,02
103	96,3	PALMITIC ACID	0,05
104	105,0	SCLAREOL	0,27
		TOTAL	99,99

Disclaimer & Caution:

Please refer to all relevant technical information specific to the product, prior to use. The information contained in this document is obtained from current and reliable sources. New Directions Aromatics Inc. provides the information contained herein, but makes no representation as to its comprehensiveness or accuracy. Individuals receiving this information must exercise their independent judgment in determining its appropriateness for a particular purpose. The user of the product is solely responsible for compliance with all laws and regulations applying to the use of the products, including intellectual property rights of third parties. As the ordinary or otherwise use(s) of this product is outside the control of New Directions Aromatics Inc., no representation or warranty, expressed or implied, is made as to the effect(s) of such use(s), (including damage or injury), or the results obtained. The liability of New Directions Aromatics Inc. is limited to the value of the goods and does not include any consequential loss. New Directions Aromatics Inc. shall not be liable for any errors or delays in the content, or for any actions taken in reliance thereon. New Directions Aromatics Inc. shall not be responsible for any damages resulting from use of or reliance upon this information. In the event of any dispute, the Customer hereby agrees that Jurisdiction is limited to the province of Ontario.