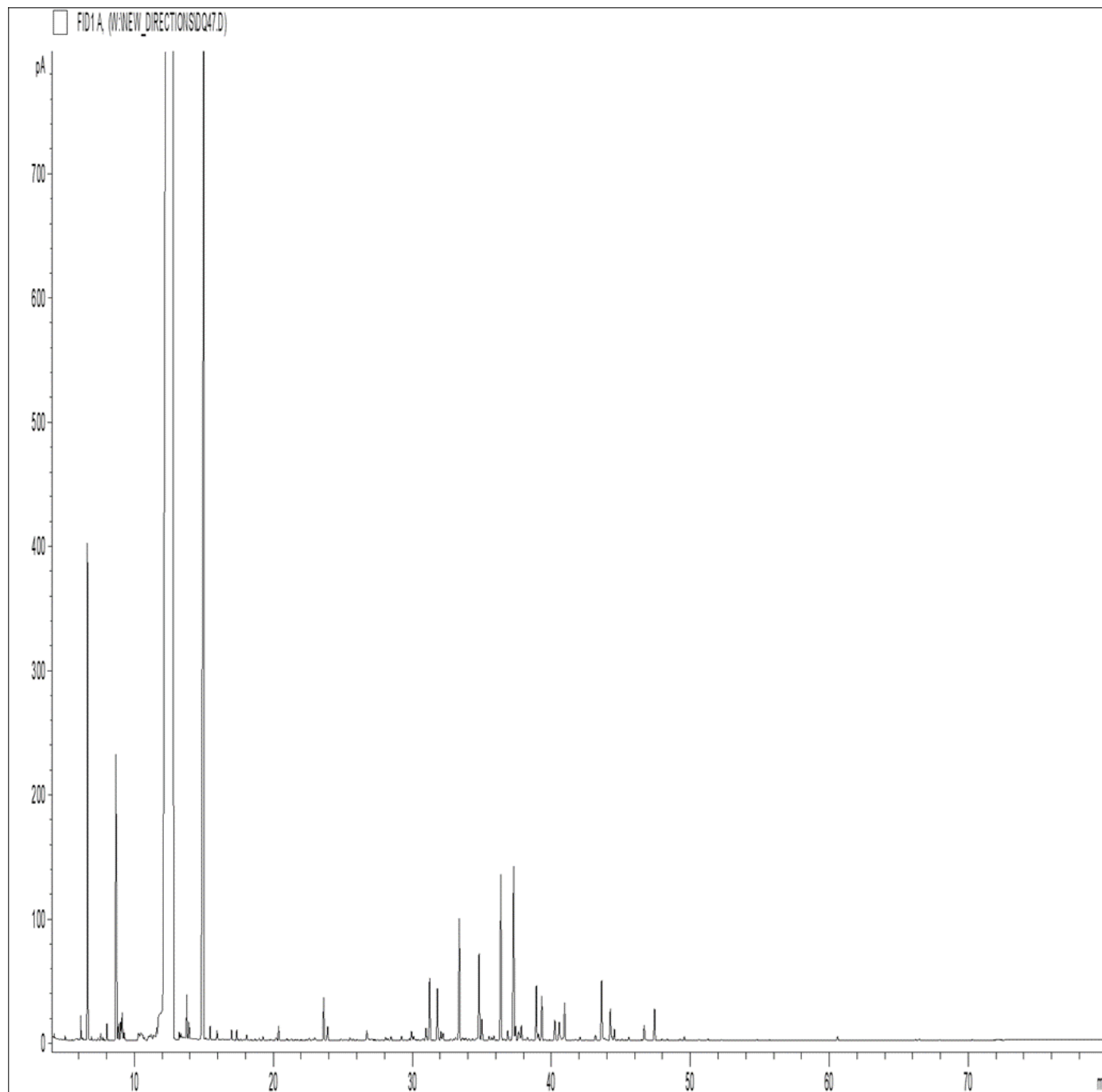


GCMS ANALYSIS

PRODUCT NAME: EUCALYPTUS BLUE MALLEE ORGANIC ESSENTIAL OIL - 50050

DATE: January 21, 2021



Due to volume turnover, this report is not lot specific, It is representative of the quality of this oil produced by the manufacturer of this product, Specific lots may vary slightly as is the case in natural products,

GCMS ANALYSIS (cont'd.)

PRODUCT NAME: EUCALYPTUS BLUE MALLEE ORGANIC ESSENTIAL OIL - 50050

Peak	RT (min)	Compound	%
1	6,15	AROMATIC COMPOUND	0,04
2	6,62	alpha-PINENE	1,25
3	6,67	alpha-THUYENE	0,03
4	7,58	CAMPHENE	0,02
5	8,03	ISOBUTYL ISOBUTYRATE	0,04
6	8,68	beta-PINENE	1,13
7	8,87	ISOAMYL ACETATE	0,05
8	9,01	SABINENE	0,07
9	9,12	PINADIENE	0,10
10	9,26	THUYA-2,4-DIENE	0,03
11	10,28	beta-MYRCENE	0,05
12	10,45	alpha-PHELLANDRENE	0,07
13	11,19	alpha-TERPINENE	0,07
14	11,61	1,8-CINEOLE, 2,3-DEHYDRO-	0,05
15	12,02	LIMONENE	0,45
16	12,80	1,8-CINEOLE	86,14
17	13,22	ALIPHATIC ESTER	0,02
18	13,35	cis-beta-OCIMENE	0,01
19	13,77	gamma-TERPINENE	0,11
20	13,93	MENTHATRIENE ISOMER	0,04
21	14,99	p-CYMENE	4,99
22	15,45	TERPINOLENE	0,04
23	15,95	AMYL VALERATE	0,03
24	16,99	3-HEXEN-1-OL ACETATE	0,03
25	17,37	PINOL	0,03
26	18,07	5-HEPTEN-2-ONE, 6-METHYL-	0,02
27	19,25	ROSE trans-OXIDE	0,01
28	20,39	3-HEXEN-1-OL	0,05
29	22,59	ALIPHATIC ALCOHOL	0,01
30	23,00	endo-ISOPINOCAMPHONE	0,02

Disclaimer & Caution

Please refer to all relevant technical information specific to the product, prior to use. The information contained in this document is obtained from current and reliable sources, New Directions Aromatics Inc, provides the information contained herein, but makes no representation as to its comprehensiveness or accuracy. Individuals receiving this information must exercise their independent judgment in determining its appropriateness for a particular purpose. The user of the product is solely responsible for compliance with all laws and regulations applying to the use of the products, including intellectual property rights of third parties. As the ordinary or otherwise use(s) of this product is outside the control of New Directions Aromatics Inc., no representation or warranty, expressed or implied, is made as to the effect(s) of such use(s), (including damage or injury), or the results obtained. The liability of New Directions Aromatics Inc, is limited to the value of the goods and does not include any consequential loss. New Directions Aromatics Inc, shall not be liable for any errors or delays in the content, or for any actions taken in reliance thereon. New Directions Aromatics Inc, shall not be responsible for any damages resulting from use of or reliance upon this information. In the event of any dispute, the Customer hereby agrees that Jurisdiction is limited to the province of Ontario.

GCMS ANALYSIS (cont'd.)

PRODUCT NAME: EUCALYPTUS BLUE MALLEE ORGANIC ESSENTIAL OIL - 50050

Peak	RT (min)	Compound	%
31	23,63	alpha-p-DIMETHYLSTYRENE	0,14
32	23,92	alpha-THUYONE	0,06
33	25,53	LINALOOL cis-OXIDE	0,02
34	26,73	alpha-CAMPHOLENAL	0,05
35	28,08	ALIPHATIC ALCOHOL	0,01
36	28,47	CAMPHENILONE	0,02
37	29,23	ALIPHATIC ESTER	0,02
38	-	CAMPHOR	Nd
39	29,94	beta-PINOCAMPHONE	0,04
40	30,11	ALIPHATIC ALCOHOL	0,02
41	30,99	LINALOOL	0,05
42	31,25	PINOCARVONE	0,24
43	31,81	NOPINONE	0,12
44	31,88	COMPOUND Mw=138	0,08
45	32,06	COMPOUND Mw=138	0,04
46	32,21	FENCHOL	0,03
47	32,76	SESQUITERPENE	0,01
48	33,12	CAMPHENE HYDRATE	0,01
49	33,39	TERPINENE-4-OL	0,47
50	33,60	ALIPHATIC ALCOHOL	0,01
51	33,84	ALIPHATIC ESTER	0,01
52	34,60	COMPOUND Mw=122	0,01
53	34,81	MYRTENAL	0,36
54	35,01	SABINAKETONE	0,09
55	35,53	trans-VERBENOL	0,02
56	35,72	TERPENIC COMPOUND	0,01
57	35,87	AROMATIC COMPOUND	0,02
58	36,37	trans-PINOCARVEOL	0,64
59	36,87	MENTHADIENOL ISOMER	0,04
60	37,30	CRYPTONE	0,73

Disclaimer & Caution

Please refer to all relevant technical information specific to the product, prior to use. The information contained in this document is obtained from current and reliable sources, New Directions Aromatics Inc, provides the information contained herein, but makes no representation as to its comprehensiveness or accuracy. Individuals receiving this information must exercise their independent judgment in determining its appropriateness for a particular purpose. The user of the product is solely responsible for compliance with all laws and regulations applying to the use of the products, including intellectual property rights of third parties. As the ordinary or otherwise use(s) of this product is outside the control of New Directions Aromatics Inc., no representation or warranty, expressed or implied, is made as to the effect(s) of such use(s), (including damage or injury), or the results obtained. The liability of New Directions Aromatics Inc, is limited to the value of the goods and does not include any consequential loss. New Directions Aromatics Inc, shall not be liable for any errors or delays in the content, or for any actions taken in reliance thereon. New Directions Aromatics Inc, shall not be responsible for any damages resulting from use of or reliance upon this information. In the event of any dispute, the Customer hereby agrees that Jurisdiction is limited to the province of Ontario.

GCMS ANALYSIS (cont'd.)

PRODUCT NAME: EUCALYPTUS BLUE MALLEE ORGANIC ESSENTIAL OIL - 50050

Peak	RT (min)	Compound	%
61	37,44	delta-TERPINEOL	0,05
62	37,65	CYCLOHEXENYL ALCOHOL ISOMER	0,04
63	37,72	CYCLOHEXENYL ALCOHOL ISOMER	0,02
64	37,86	CYCLOHEXENYL ALCOHOL ISOMER	0,06
65	38,29	NERAL	0,02
66	38,93	TERPENYL ACETATE	0,21
67	39,08	VERBENONE	0,03
68	39,32	alpha-TERPINEOL	0,18
69	40,26	PELLANDRAL	0,09
70	40,57	PIPERITONE	0,09
71	40,97	CARVONE	0,15
72	42,07	trans-ISOPIPERITENOL	0,01
73	43,18	p-METHYLACETOPHENONE	0,02
74	43,63	CUMINAL	0,25
75	44,25	MYRTENOL	0,14
76	44,54	MENTHADIENOL ISOMER	0,04
77	45,57	2-PHENYLETHYL ACETATE	0,01
78	46,69	trans-CARVEOL	0,06
79	47,43	p-CYMENE-8-OL	0,12
80	49,58	ALIPHATIC ALCOHOL	0,01
81	60,60	CUMINOL	0,01
		TOTAL	100,00

Disclaimer & Caution

Please refer to all relevant technical information specific to the product, prior to use. The information contained in this document is obtained from current and reliable sources, New Directions Aromatics Inc, provides the information contained herein, but makes no representation as to its comprehensiveness or accuracy. Individuals receiving this information must exercise their independent judgment in determining its appropriateness for a particular purpose. The user of the product is solely responsible for compliance with all laws and regulations applying to the use of the products, including intellectual property rights of third parties. As the ordinary or otherwise use(s) of this product is outside the control of New Directions Aromatics Inc., no representation or warranty, expressed or implied, is made as to the effect(s) of such use(s), (including damage or injury), or the results obtained. The liability of New Directions Aromatics Inc, is limited to the value of the goods and does not include any consequential loss. New Directions Aromatics Inc, shall not be liable for any errors or delays in the content, or for any actions taken in reliance thereon. New Directions Aromatics Inc, shall not be responsible for any damages resulting from use of or reliance upon this information. In the event of any dispute, the Customer hereby agrees that Jurisdiction is limited to the province of Ontario.