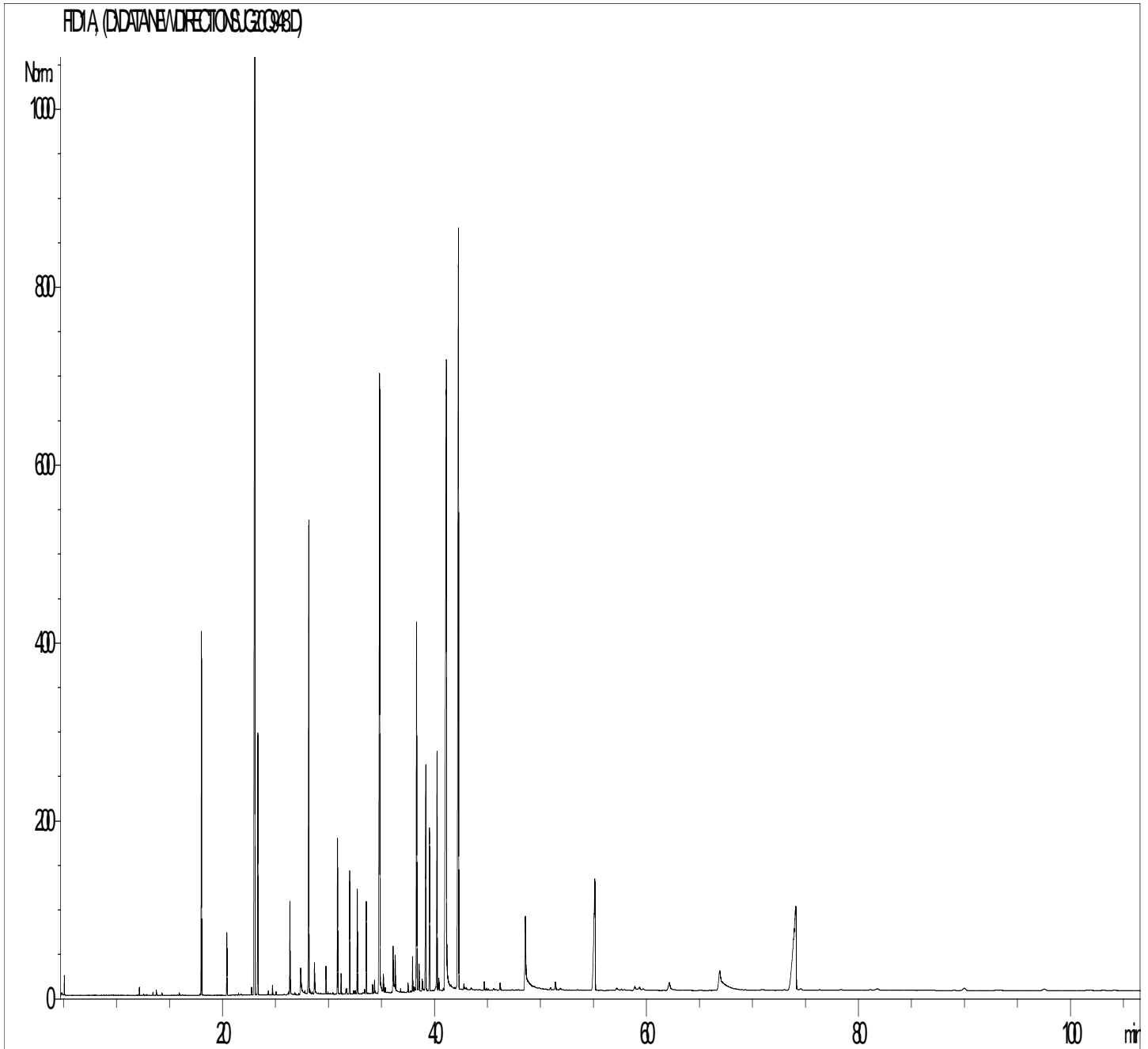




GCMS ANALYSIS

PRODUCT NAME: JASMINE GRANDIFLORUM ABSOLUTE - 12004

DATE: November 20, 2018



*Due to volume turnover, this report is not lot specific. It is representative of the quality of this oil produced by the manufacturer of this product. Specific lots may vary slightly as is the case in natural products.*



**GCMS ANALYSIS (cont'd.)**
**PRODUCT NAME: JASMINE GRANDIFLORUM ABSOLUTE - 12004**

Peak	RT (min)	Compound name	%
1	11,1	ALIPHATIC ESTER	0,01
2	12,8	BENZENYL ESTER	0,01
3	13,5	CYCLOHEXENE ISOMER	0,02
4	14,3	MENTHATRIENE ISOMER	0,01
5	14,5	2-PENTANONE,4-HYDROXY-4-METHYL	0,01
6	14,8	BENZENYL ESTER	0,02
7	15,4	MENTHATRIENE ISOMER	0,01
8	16,2	MENTHATRIENE ISOMER	0,01
9	16,5	Cis-3-HEXENYL BUTYRATE	0,02
10	16,7	ALIPHATIC ESTER	0,01
11	17,1	ALIPHATIC ALCOHOL	0,01
12	19,0	BENZALDEHYDE	0,01
13	19,5	<b>LINALOOL</b>	<b>4,91</b>
14	19,8	LINALYL ACETATE	0,01
15	21,6	METHYL BENZOATE	0,06
16	22,8	ETHYL BENZOATE	0,01
17	23,0	BENZENE, 1-ETHENYL-4-METHOXY	0,02
18	23,5	alpha-TERPINEOL	0,01
19	24,3	<b>BENZYL ACETATE</b>	<b>17,42</b>
20	24,6	AROMATIC COMPOUND	0,01
21	24,8	alpha-FARNESENE	1,16
22	24,9	GERANYL ACETATE	0,03
23	25,6	METHYL SALICYLATE	0,03
24	26,3	ALIPHATIC ESTER	0,02
25	26,4	2-PHENYLETHYL ACETATE	0,03
26	27,0	GERANIOL	0,03
27	27,4	E-GERANYL ACETONE	0,03
28	27,7	BENZYL ALCOHOL	1,39
29	28,5	PHENYLETHYL ALCOHOL	0,04
30	28,6	NONADECANE	0,02

**Disclaimer & Caution**

Please refer to all relevant technical information specific to the product, prior to use. The information contained in this document is obtained from current and reliable sources. New Directions Aromatics Inc. provides the information contained herein, but makes no representation as to its comprehensiveness or accuracy. Individuals receiving this information must exercise their independent judgment in determining its appropriateness for a particular purpose. The user of the product is solely responsible for compliance with all laws and regulations applying to the use of the products, including intellectual property rights of third parties. As the ordinary or otherwise use(s) of this product is outside the control of New Directions Aromatics Inc., no representation or warranty, expressed or implied, is made as to the effect(s) of such use(s), (including damage or injury), or the results obtained. The liability of New Directions Aromatics Inc. is limited to the value of the goods and does not include any consequential loss. New Directions Aromatics Inc. shall not be liable for any errors or delays in the content, or for any actions taken in reliance thereon. New Directions Aromatics Inc. shall not be responsible for any damages resulting from use of or reliance upon this information. In the event of any dispute, the Customer hereby agrees that Jurisdiction is limited to the province of Ontario.

**GCMS ANALYSIS (cont'd.)**
**PRODUCT NAME: JASMINE GRANDIFLORUM ABSOLUTE - 12004**

Peak	RT (min)	Compound name	%
31	28,9	ALIPHATIC ESTER	0,02
32	29,1	COMPOUND Mw=138	0,56
33	29,5	<b>Z-JASMONE</b>	<b>2,54</b>
34	29,8	MALTOL Mw=126	0,19
35	30,4	PHYTYL COMPOUND	0,23
36	30,9	ALIPHATIC ESTER	0,03
37	31,2	BENZYLIC ESTER	0,02
38	31,3	NEROLIDOL	0,19
39	32,1	p-CRESOL	0,69
40	32,3	BENZYLIC ESTER	0,04
41	32,9	BENZYL TIGLATE	0,07
42	33,0	HENEICOSANE	0,09
43	33,3	Trans-3-HEXENYL BENZOATE	0,90
44	33,4	PENTADECANONE TRIMETHYL	0,13
45	33,5	ALIPHATIC ESTER	0,02
46	33,7	BENZYLIC ESTER	0,03
47	33,9	EUGENOL	1,87
48	34,1	DOCOSANE	0,02
49	34,9	2,7-OCTADIENE-1,6-DIOL, 2,6-DIMETHYL	0,10
50	35,2	METHYL PALMITATE	1,43
51	35,5	AROMATIC COMPOUND	0,02
52	35,7	FARNESYL ACETATE	0,07
53	35,8	FURANIC COMPOUND	0,12
54	35,9	ETHYL PALMITATE	0,05
55	36,1	Z-JASMOLACTONE	0,65
56	36,6	<b>ISOPHYTOL</b>	<b>6,05</b>
57	36,7	TRICOSANE	0,14
58	37,0	ALIPHATIC ESTER	0,03
59	37,1	ALIPHATIC ESTER	0,04
60	37,2	CHAVICOL	0,06

**Disclaimer & Caution**

Please refer to all relevant technical information specific to the product, prior to use. The information contained in this document is obtained from current and reliable sources. New Directions Aromatics Inc. provides the information contained herein, but makes no representation as to its comprehensiveness or accuracy. Individuals receiving this information must exercise their independent judgment in determining its appropriateness for a particular purpose. The user of the product is solely responsible for compliance with all laws and regulations applying to the use of the products, including intellectual property rights of third parties. As the ordinary or otherwise use(s) of this product is outside the control of New Directions Aromatics Inc., no representation or warranty, expressed or implied, is made as to the effect(s) of such use(s), (including damage or injury), or the results obtained. The liability of New Directions Aromatics Inc. is limited to the value of the goods and does not include any consequential loss. New Directions Aromatics Inc. shall not be liable for any errors or delays in the content, or for any actions taken in reliance thereon. New Directions Aromatics Inc. shall not be responsible for any damages resulting from use of or reliance upon this information. In the event of any dispute, the Customer hereby agrees that Jurisdiction is limited to the province of Ontario.

**GCMS ANALYSIS (cont'd.)**
**PRODUCT NAME: JASMINE GRANDIFLORUM ABSOLUTE - 12004**

Peak	RT (min)	Compound name	%
61	37,4	METHYL JASMONATE	0,44
62	37,5	ISOEUGENOL	0,24
63	37,6	ALIPHATIC ALCOHOL	0,06
64	38,0	PHENYLMETHYL ESTER	0,07
65	38,5	METHYL JASMONATE ISOMER	0,04
66	39,1	BENZOIC ACID	0,12
67	39,2	METHYL STEARATE	0,21
68	39,3	<b>INDOLE</b>	<b>2,27</b>
69	39,5	METHYL OLEATE	0,70
70	39,6	9-METHYL OLEATE	0,13
71	40,2	METHYL-N-ACETYL-ANTHRANILATE	0,24
72	40,3	ALIPHATIC ESTER	0,18
73	40,4	METHYL LINOLEATE	0,26
74	40,9	<b>PHYTYL ACETATE</b>	<b>5,39</b>
75	41,0	<b>GERANYLLINALOL</b>	<b>3,18</b>
76	41,5	ALIPHATIC ESTER	0,09
77	41,6	<b>METHYL LINOLENATE</b>	<b>2,19</b>
78	41,8	ALIPHATIC ESTER	0,15
79	42,2	ETHYL LINOLEATE	0,15
80	42,4	<b>PHYTOL</b>	<b>7,90</b>
81	42,9	<b>BENZYL BENZOATE</b>	<b>18,09</b>
82	43,2	AROMATIC COMPOUND	0,07
83	43,6	AROMATIC COMPOUND	0,07
84	44,2	AROMATIC COMPOUND	0,26
85	45,5	ETHYL LINOLENATE	0,07
86	45,7	AROMATIC COMPOUND	0,18
87	46,0	BENZYL SALICYLATE	0,14
88	46,3	AROMATIC COMPOUND	0,09
89	48,2	<b>PALMITIC ACID</b>	<b>1,94</b>
90	50,7	AROMATIC COMPOUND	0,14

**Disclaimer & Caution**

Please refer to all relevant technical information specific to the product, prior to use. The information contained in this document is obtained from current and reliable sources. New Directions Aromatics Inc. provides the information contained herein, but makes no representation as to its comprehensiveness or accuracy. Individuals receiving this information must exercise their independent judgment in determining its appropriateness for a particular purpose. The user of the product is solely responsible for compliance with all laws and regulations applying to the use of the products, including intellectual property rights of third parties. As the ordinary or otherwise use(s) of this product is outside the control of New Directions Aromatics Inc., no representation or warranty, expressed or implied, is made as to the effect(s) of such use(s), (including damage or injury), or the results obtained. The liability of New Directions Aromatics Inc. is limited to the value of the goods and does not include any consequential loss. New Directions Aromatics Inc. shall not be liable for any errors or delays in the content, or for any actions taken in reliance thereon. New Directions Aromatics Inc. shall not be responsible for any damages resulting from use of or reliance upon this information. In the event of any dispute, the Customer hereby agrees that Jurisdiction is limited to the province of Ontario.

GCMS ANALYSIS (cont'd.)

PRODUCT NAME: JASMINE GRANDIFLORUM ABSOLUTE - 12004

Peak	RT (min)	Compound name	%
91	53,8	<b>SQUALENE</b>	<b>3,81</b>
92	56,0	OLEIC ACID	0,40
93	56,7	PHENYLETHYL ESTER	0,12
94	61,8	LINOLENIC ACID	1,71
95	68,6	<b>EPOXYSQUALENE Mw=426</b>	<b>6,16</b>
96	74,5	SQUALENE ISOMER	0,14
97	79,6	PHENYLMETHYL LINOLENATE	0,23
98	85,9	PHENYLETHYL ESTER	0,08
99	94,7	ALIPHATIC ALCOHOL	0,32
100	97,7	ALIPHATIC ALCOHOL	0,12
		<b>TOTAL</b>	<b>99,93</b>

Disclaimer & Caution

Please refer to all relevant technical information specific to the product, prior to use. The information contained in this document is obtained from current and reliable sources. New Directions Aromatics Inc. provides the information contained herein, but makes no representation as to its comprehensiveness or accuracy. Individuals receiving this information must exercise their independent judgment in determining its appropriateness for a particular purpose. The user of the product is solely responsible for compliance with all laws and regulations applying to the use of the products, including intellectual property rights of third parties. As the ordinary or otherwise use(s) of this product is outside the control of New Directions Aromatics Inc., no representation or warranty, expressed or implied, is made as to the effect(s) of such use(s), (including damage or injury), or the results obtained. The liability of New Directions Aromatics Inc. is limited to the value of the goods and does not include any consequential loss. New Directions Aromatics Inc. shall not be liable for any errors or delays in the content, or for any actions taken in reliance thereon. New Directions Aromatics Inc. shall not be responsible for any damages resulting from use of or reliance upon this information. In the event of any dispute, the Customer hereby agrees that Jurisdiction is limited to the province of Ontario.