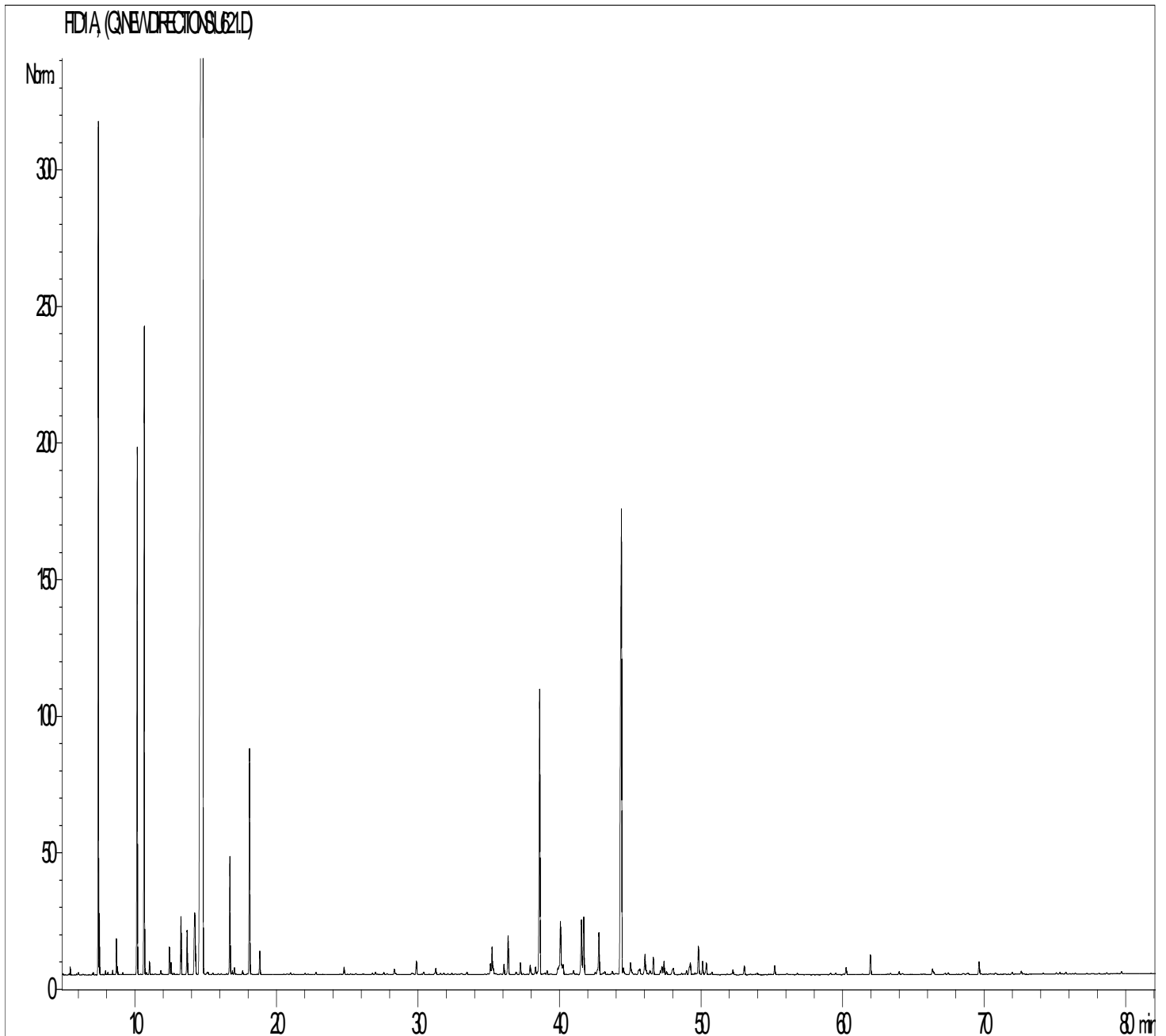




GCMS ANALYSIS

PRODUCT NAME: LAUREL LEAF ORGANIC ESSENTIAL OIL - 50069

DATE: November 30, 2018



Due to volume turnover, this report is not lot specific. It is representative of the quality of this oil produced by the manufacturer of this product. Specific lots may vary slightly as is the case in natural products.

GCMS ANALYSIS (cont'd.)

PRODUCT NAME: LAUREL LEAF ORGANIC ESSENTIAL OIL - 50069

Peak	RT (min)	Compound name	%
1	4,3	ACETONE	0,04
2	5,4	ETHANOL	0,03
3	6,0	1,3,5-HEXATRIENE, 2-METHYL	0,02
4	7,0	TRICYCLENE	0,02
5	7,4	alpha-PINENE	5,07
6	7,5	alpha-THUYENE	0,31
7	7,9	TOLUENE + 3-METHYL-2-BUTANOL ACETATE	0,04
8	8,0	ETHYL 2-METHYLBUTYRATE	0,02
9	8,4	alpha-FENCHENE	0,03
10	8,7	CAMPHENE	0,23
11	8,8	ETHYL ISOVALERATE	0,05
12	9,1	HEXANAL	0,01
13	10,1	beta-PINENE	3,98
14	10,6	SABINENE	4,94
15	10,8	PINADIENE	0,02
16	11,0	THUYADIENE	0,09
17	11,8	delta3-CARENE	0,04
18	12,4	beta-MYRCENE	0,22
19	12,5	alpha-PHELLANDRENE	0,10
20	12,7	psi-LIMONENE	0,02
21	13,2	alpha-TERPINENE	0,51
22	13,6	1,8-CINEOLE, 2,3-DEHYDRO	0,41
23	14,2	LIMONENE	0,96
24	14,8	1,8-CINEOLE	59,98
25	16,7	gamma-TERPINENE	1,03
26	16,9	MENTHATRIENE ISOMER	0,03
27	17,0	Trans-beta-OCIMENE	0,06
28	17,6	2-HEPTANOL ACETATE + m-CYMENE	0,03
29	18,0	p-CYMENE	2,08
30	18,8	TERPINOLENE	0,21

Disclaimer & Caution

Please refer to all relevant technical information specific to the product, prior to use. The information contained in this document is obtained from current and reliable sources. New Directions Aromatics Inc. provides the information contained herein, but makes no representation as to its comprehensiveness or accuracy. Individuals receiving this information must exercise their independent judgment in determining its appropriateness for a particular purpose. The user of the product is solely responsible for compliance with all laws and regulations applying to the use of the products, including intellectual property rights of third parties. As the ordinary or otherwise use(s) of this product is outside the control of New Directions Aromatics Inc., no representation or warranty, expressed or implied, is made as to the effect(s) of such use(s), (including damage or injury), or the results obtained. The liability of New Directions Aromatics Inc. is limited to the value of the goods and does not include any consequential loss. New Directions Aromatics Inc. shall not be liable for any errors or delays in the content, or for any actions taken in reliance thereon. New Directions Aromatics Inc. shall not be responsible for any damages resulting from use of or reliance upon this information. In the event of any dispute, the Customer hereby agrees that Jurisdiction is limited to the province of Ontario.

GCMS ANALYSIS (cont'd.)

PRODUCT NAME: LAUREL LEAF ORGANIC ESSENTIAL OIL - 50069

Peak	RT (min)	Compound name	%
31	20,9	PINOL	0,02
32	22,8	1-HEXANOL	0,02
33	24,8	3-HEXEN-1-OL	0,07
34	27,0	AROMATIC COMPOUND	0,03
35	28,3	alpha-p-DIMETHYLSTYRENE	0,07
36	29,9	Trans-THUYANOL	0,14
37	30,4	NERYL OXIDE	0,03
38	31,2	YLANGENE	0,08
39	33,4	beta-BOURBONENE	0,04
40	35,1	ALIPHATIC KETONE Mw=150	0,12
41	35,2	LINALOOL	0,28
42	35,3	Cis-THUYANOL	0,07
43	36,1	Trans-p-MENTH-2-EN-1-OL	0,11
44	36,4	PINOCARVONE	0,44
45	36,9	NOPINONE	0,04
46	37,2	BORNYL ACETATE	0,13
47	37,9	beta-ELEMENE	0,13
48	38,3	beta-CARYOPHYLLENE	0,09
49	38,4	TERPINENE-4-OL	3,30
50	38,6	2-UNDECANONE	0,03
51	39,1	HOTRIENOL	0,04
52	39,8	DEHYDROSABINACETONE	0,07
53	39,9	MYRTENAL	0,68
54	40,0	4-THUYEN-2-alpha-YL ACETATE	0,09
55	40,1	SABINACETONE	0,07
56	40,2	Cis-p-MENTH-2-EN-1-OL	0,11
57	40,9	SESQUITERPENE	0,04
58	41,4	Cis-PINOCARVYL ACETATE	0,05
59	41,5	delta-TERPENYL ACETATE	0,67
60	41,7	Trans-SABINYL ACETATE	0,66

Disclaimer & Caution

Please refer to all relevant technical information specific to the product, prior to use. The information contained in this document is obtained from current and reliable sources. New Directions Aromatics Inc. provides the information contained herein, but makes no representation as to its comprehensiveness or accuracy. Individuals receiving this information must exercise their independent judgment in determining its appropriateness for a particular purpose. The user of the product is solely responsible for compliance with all laws and regulations applying to the use of the products, including intellectual property rights of third parties. As the ordinary or otherwise use(s) of this product is outside the control of New Directions Aromatics Inc., no representation or warranty, expressed or implied, is made as to the effect(s) of such use(s), (including damage or injury), or the results obtained. The liability of New Directions Aromatics Inc. is limited to the value of the goods and does not include any consequential loss. New Directions Aromatics Inc. shall not be liable for any errors or delays in the content, or for any actions taken in reliance thereon. New Directions Aromatics Inc. shall not be responsible for any damages resulting from use of or reliance upon this information. In the event of any dispute, the Customer hereby agrees that Jurisdiction is limited to the province of Ontario.

GCMS ANALYSIS (cont'd.)

PRODUCT NAME: LAUREL LEAF ORGANIC ESSENTIAL OIL - 50069

Peak	RT (min)	Compound name	%
61	42,5	CRYPTONE	0,04
62	42,7	Trans-p-2,8-MENTHADIEN-1-OL	0,05
63	42,8	delta-TERPINEOL	0,50
64	43,0	Cis-4,5-MUUROLADIENE	0,03
65	43,2	Trans-PIPERITOL	0,04
66	43,7	NERAL	0,04
67	44,3	TERPENYL ACETATE	6,34
68	44,4	alpha-TERPINEOL	1,06
69	44,5	gamma-CURCUMENE	0,08
70	45,0	GERMACRENE D	0,17
71	45,5	SESQUITERPENE	0,05
72	45,6	beta-SELINENE	0,09
73	46,0	EXO-2-HYDROXYCINEOL ACETATE	0,12
74	46,1	MENTHADIENOL ISOMER	0,16
75	46,2	NERYL ACETATE	0,06
76	46,3	CARVONE	0,07
77	46,6	COMPOUND Mw=152	0,21
78	47,2	AROMATIC COMPOUND	0,15
79	47,4	ALIPHATIC ALCOHOL	0,10
80	47,5	Trans-ISOPIPERITENOL	0,04
81	48,0	delta-CADINENE	0,08
82	48,1	gamma-CADINENE	0,07
83	49,0	Cis-CARVYL ACETATE	0,05
84	49,2	CUMINAL	0,09
85	49,3	MENTHADIENOL ISOMER	0,13
86	49,8	MYRTENOL	0,34
87	50,1	Trans-p-MENTHA-1,8-DIEN-2-OL	0,15
88	50,4	COMPOUND Mw=152	0,15
89	50,8	DIMETHOXYTOLUENE Mw=152	0,04
90	52,2	Trans-CARVEOL	0,05

Disclaimer & Caution

Please refer to all relevant technical information specific to the product, prior to use. The information contained in this document is obtained from current and reliable sources. New Directions Aromatics Inc. provides the information contained herein, but makes no representation as to its comprehensiveness or accuracy. Individuals receiving this information must exercise their independent judgment in determining its appropriateness for a particular purpose. The user of the product is solely responsible for compliance with all laws and regulations applying to the use of the products, including intellectual property rights of third parties. As the ordinary or otherwise use(s) of this product is outside the control of New Directions Aromatics Inc., no representation or warranty, expressed or implied, is made as to the effect(s) of such use(s), (including damage or injury), or the results obtained. The liability of New Directions Aromatics Inc. is limited to the value of the goods and does not include any consequential loss. New Directions Aromatics Inc. shall not be liable for any errors or delays in the content, or for any actions taken in reliance thereon. New Directions Aromatics Inc. shall not be responsible for any damages resulting from use of or reliance upon this information. In the event of any dispute, the Customer hereby agrees that Jurisdiction is limited to the province of Ontario.

GCMS ANALYSIS (cont'd.)

PRODUCT NAME: LAUREL LEAF ORGANIC ESSENTIAL OIL - 50069

Peak	RT (min)	Compound name	%
91	53,0	p-CYMENE-8-OL	0,10
92	55,2	Cis-p-MENTHA-1,8-DIEN-2-OL	0,10
93	56,0	ALIPHATIC ESTER	0,02
94	56,8	alpha-CALACORENE	0,04
95	59,1	SESQUITERPENIC EPOXIDE	0,02
96	59,5	AROMATIC COMPOUND	0,02
97	60,2	CARYOPHYLLENE OXIDE	0,10
98	62,0	E-METHYLEUGENOL	0,22
99	63,3	SESQUITERPENIC EPOXIDE	0,03
100	64,0	ALIPHATIC ESTER	0,03
101	66,3	CUMINOL	0,08
102	66,5	CYCLOHEX-2-ENOL, 1-METHYL-4-ACETOXY-1-METHYLETHYL-	0,03
103	67,5	SPATHULENOL	0,02
104	68,8	CINNAMYLE ACETATE	0,05
105	69,6	EUGENOL	0,15
106	71,9	CARVACROL	0,04
107	72,6	beta-EUDESOL	0,03
108	75,7	CARYOPHYLLA-2,6-DIEN-5-alpha-OL	0,03
109	79,7	SESQUITERPENIC EPOXIDE	0,03
		TOTAL	99,99

Disclaimer & Caution

Please refer to all relevant technical information specific to the product, prior to use. The information contained in this document is obtained from current and reliable sources. New Directions Aromatics Inc. provides the information contained herein, but makes no representation as to its comprehensiveness or accuracy. Individuals receiving this information must exercise their independent judgment in determining its appropriateness for a particular purpose. The user of the product is solely responsible for compliance with all laws and regulations applying to the use of the products, including intellectual property rights of third parties. As the ordinary or otherwise use(s) of this product is outside the control of New Directions Aromatics Inc., no representation or warranty, expressed or implied, is made as to the effect(s) of such use(s), (including damage or injury), or the results obtained. The liability of New Directions Aromatics Inc. is limited to the value of the goods and does not include any consequential loss. New Directions Aromatics Inc. shall not be liable for any errors or delays in the content, or for any actions taken in reliance thereon. New Directions Aromatics Inc. shall not be responsible for any damages resulting from use of or reliance upon this information. In the event of any dispute, the Customer hereby agrees that Jurisdiction is limited to the province of Ontario.