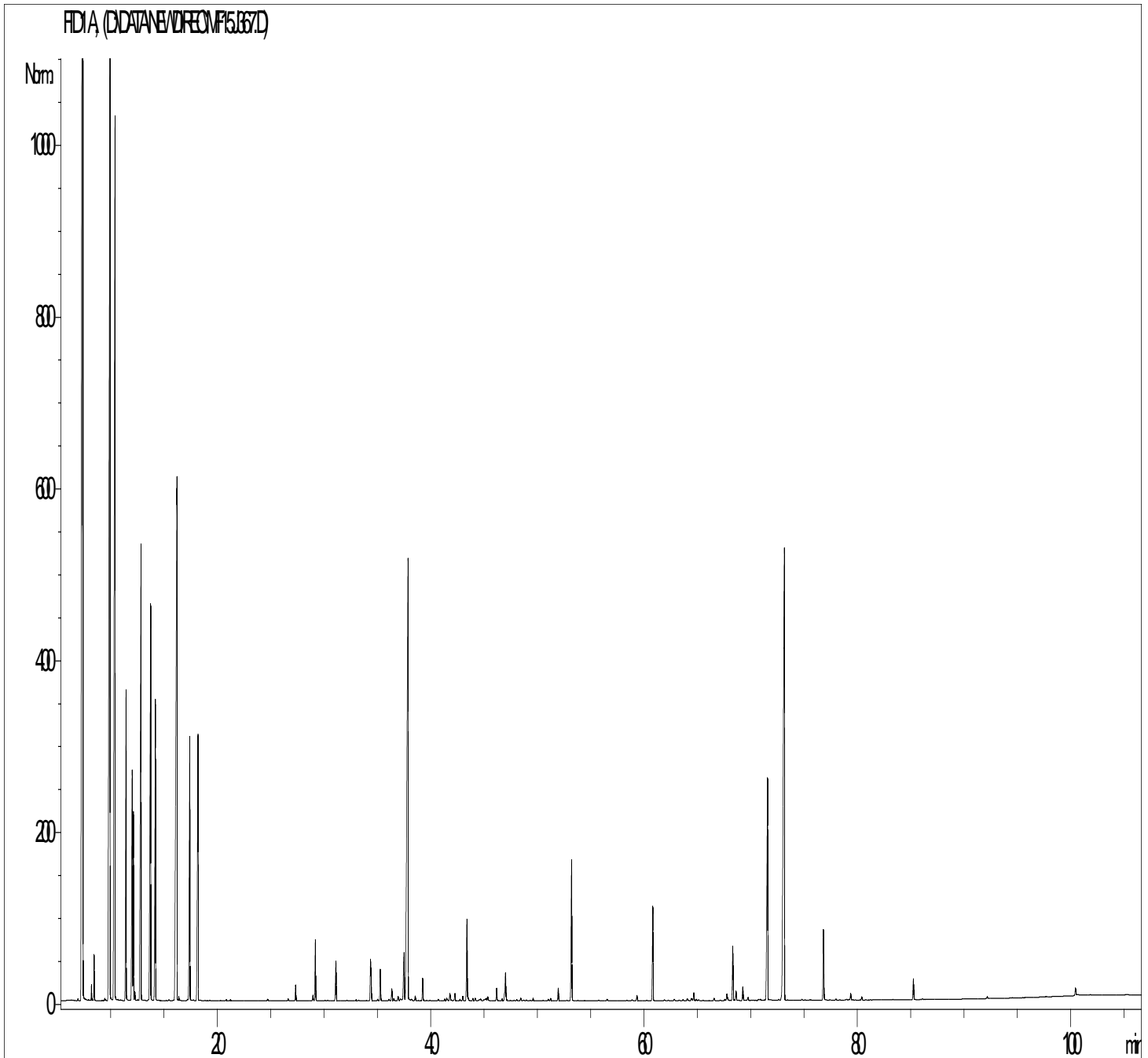


GCMS ANALYSIS

PRODUCT NAME: MACE ESSENTIAL OIL - 11087

DATE: July 21, 2021



*Due to volume turnover, this report is not lot specific. It is representative of the quality of this oil produced by the manufacturer of this product. Specific lots may vary slightly as is the case in natural products.*

GCMS ANALYSIS (cont'd.)

PRODUCT NAME: MACE ESSENTIAL OIL - 11087

Peak	RT (min)	Compound name	%
1	6,9	TRICYCLENE	0,01
2	7,3	<b>α-PINENE</b>	<b>17,70</b>
3	7,4	<b>α-THUYENE</b>	<b>2,98</b>
4	8,2	α-FENCHENE	0,08
5	8,4	CAMPHENE	0,26
6	9,4	TERPENE ISOMER	0,02
7	9,9	<b>β-PINENE</b>	<b>12,39</b>
8	10,4	<b>SABINENE</b>	<b>9,83</b>
9	10,6	PINADIENE	0,01
10	11,4	<b>Δ3-CARENE</b>	<b>2,38</b>
11	12,0	β-MYRCENE	2,07
12	12,1	α-PHELLANDRENE	1,08
13	12,3	ψ-LIMONENE	0,05
14	12,8	<b>α-TERPINENE</b>	<b>4,65</b>
15	13,7	<b>LIMONENE</b>	<b>4,13</b>
16	14,1	1,8-CINEOLE	0,13
17	14,2	<b>β-PHELLANDRENE</b>	<b>2,50</b>
18	15,4	Cis-β-OCIMENE	0,01
19	16,2	<b>γ-TERPINENE</b>	<b>7,75</b>
20	16,3	Trans-β-OCIMENE	0,02
21	17,2	m-CYMENE	0,01
22	17,4	<b>p-CYMENE</b>	<b>2,38</b>
23	18,2	<b>TERPINOLENE</b>	<b>2,75</b>
24	20,8	ADAMANTANOL Mw=152	0,01
25	21,2	6-METHYL-5-HEPTEN-2-ONE	0,01
26	24,7	MENTHATRIENE ISOMER	0,01
27	26,6	COMPOUND Mw=134	0,02
28	27,3	α,p-DIMETHYLSTYRENE	0,13
29	28,9	EPOXY-4,8-TERPINOLENE	0,05
30	29,1	Trans-THUYANOL	0,51
31	30,0	TERPENE ISOMER	0,01
32	31,1	α-COPAENE	0,38

Disclaimer & Caution

Prior to use, please refer to all relevant technical information specific to the product. The information contained in this document is obtained from current and reliable sources. New Directions Aromatics Inc. provides the information contained herein, but makes no representation as to its comprehensiveness or accuracy. Individuals receiving this information must exercise their independent judgment in determining its appropriateness for a particular purpose. The user of the product is solely responsible for compliance with all laws and regulations applying to the use of the product, including intellectual property rights of third parties. As the ordinary or otherwise use(s) of this product is outside the control of New Directions Aromatics Inc., no representation or warranty - expressed or implied - is made as to the effect(s) of such use(s), (including damage or injury), or the results obtained. The liability of New Directions Aromatics Inc. is limited to the value of the goods and does not include any consequential loss. New Directions Aromatics Inc. shall not be liable for any errors or delays in the content or for any actions taken in reliance thereon. New Directions Aromatics Inc. shall not be responsible for any damages resulting from the use of or reliance upon this information.

## GCMS ANALYSIS (cont'd.)

PRODUCT NAME: MACE ESSENTIAL OIL - 11087

Peak	RT (min)	Compound	%
33	32,1	TERPENE ISOMER	0,01
34	32,9	TERPENE ISOMER	0,01
35	33,2	$\alpha$ -GURJUNENE	0,01
36	34,3	LINALOOL	0,36
37	34,4	Cis-THUYANOL	0,14
38	35,0	LINALYL ACETATE	0,01
39	35,2	Trans-p-MENTH-2-EN-1-OL	0,29
40	36,0	TERPINENE-1-OL	0,02
41	36,3	BORNYL ACETATE	0,11
42	36,5	FENCHOL	0,02
43	36,9	$\alpha$ -trans-BERGAMOTENE	0,04
44	37,1	$\beta$ -ELEMENE	0,02
45	37,3	BENZENE, 1-METHOXY-4-PENTYL Mw=178	0,01
46	37,5	$\beta$ -CARYOPHYLLENE	0,61
47	37,8	TERPINENE-4-OL	7,11
48	38,2	SESQUITERPENE	0,03
49	38,5	TERPINENE-4-YLE ACETATE	0,05
50	39,2	Cis-p-MENTH-2-EN-1-OL	0,20
51	40,6	Trans-PINOCARVEOL	0,01
52	41,3	CITRONELLYL ACETATE	0,02
53	41,5	E- $\beta$ -FARNESENE	0,03
54	41,8	$\alpha$ -HUMULENE	0,08
55	42,2	Cis-PIPERITOL	0,08
56	42,7	SESQUITERPENE	0,01
57	42,9	$\gamma$ -MUUROLENE	0,04
58	43,4	$\alpha$ -TERPINEOL	0,84
59	43,5	BORNEOL	0,02
60	43,9	SESQUITERPENE	0,02
61	44,2	GERMACRENE D	0,03
62	44,5	SESQUITERPENE	0,02
63	44,6	SESQUITERPENE	0,03
64	44,9	COMPONENT Mw=152	0,02

### Disclaimer & Caution

Prior to use, please refer to all relevant technical information specific to the product. The information contained in this document is obtained from current and reliable sources. New Directions Aromatics Inc. provides the information contained herein, but makes no representation as to its comprehensiveness or accuracy. Individuals receiving this information must exercise their independent judgment in determining its appropriateness for a particular purpose. The user of the product is solely responsible for compliance with all laws and regulations applying to the use of the product, including intellectual property rights of third parties. As the ordinary or otherwise use(s) of this product is outside the control of New Directions Aromatics Inc., no representation or warranty - expressed or implied - is made as to the effect(s) of such use(s), (including damage or injury), or the results obtained. The liability of New Directions Aromatics Inc. is limited to the value of the goods and does not include any consequential loss. New Directions Aromatics Inc. shall not be liable for any errors or delays in the content or for any actions taken in reliance thereon. New Directions Aromatics Inc. shall not be responsible for any damages resulting from the use of or reliance upon this information.

## GCMS ANALYSIS (cont'd.)

PRODUCT NAME: MACE ESSENTIAL OIL - 11087

Peak	RT (min)	Compound	%
65	45,1	SESQUITERPENE	0,02
66	45,2	SESQUITERPENE	0,02
67	45,3	$\beta$ -BISABOLENE	0,05
68	46,2	Trans- PIPERITOL	0,11
69	46,7	$\alpha$ -FARNESENE	0,02
70	46,9	TERPENIC ACETATE	0,06
71	47,0	$\delta$ -CADINENE	0,28
72	47,1	$\gamma$ -CADINENE	0,01
73	48,0	FARNESENE ISOMER	0,01
74	48,4	CADINA-1,4-DIENE	0,03
75	48,9	NEROL	0,01
76	49,6	SABINOL ISOMER	0,02
77	51,0	Trans-CARVEOL	0,02
78	51,2	CALAMENENE	0,02
79	51,9	p-CYMENE-8-OL	0,12
80	53,2	SAFROLE	1,39
81	56,5	ALIPHATIC ALCOHOL	0,02
82	58,8	ALIPHATIC ESTER	0,01
83	59,3	CARYOPHYLLENE EPOXIDE	0,05
84	60,8	METHYLEUGENOL	0,86
85	62,8	MENTHADIENOL ISOMERE	0,01
86	63,6	SESQUITERPENOL	0,01
87	64,0	AROMATIC COMPONENT Mw=238	0,02
88	64,4	ELEMOL	0,03
89	64,6	Cis-1,4-DIHYDRO-p-MENTH-2-ENE	0,08
90	64,9	GUAIOL	0,01
	65,1	CUMINOL	0,01
	66,5	SPATHULENOL	0,02
91	67,6	COMPONENT Mw=127	0,01
92	67,8	Trans-1,4-DIHYDRO-p-MENTH-2-ENE	0,08
93	68,3	EUGENOL	0,53
94	68,6	$\gamma$ -EUDESMOL	0,09

### Disclaimer & Caution

Prior to use, please refer to all relevant technical information specific to the product. The information contained in this document is obtained from current and reliable sources. New Directions Aromatics Inc. provides the information contained herein, but makes no representation as to its comprehensiveness or accuracy. Individuals receiving this information must exercise their independent judgment in determining its appropriateness for a particular purpose. The user of the product is solely responsible for compliance with all laws and regulations applying to the use of the product, including intellectual property rights of third parties. As the ordinary or otherwise use(s) of this product is outside the control of New Directions Aromatics Inc., no representation or warranty - expressed or implied - is made as to the effect(s) of such use(s), (including damage or injury), or the results obtained. The liability of New Directions Aromatics Inc. is limited to the value of the goods and does not include any consequential loss. New Directions Aromatics Inc. shall not be liable for any errors or delays in the content or for any actions taken in reliance thereon. New Directions Aromatics Inc. shall not be responsible for any damages resulting from the use of or reliance upon this information.

GCMS ANALYSIS *(cont'd.)*

PRODUCT NAME: MACE ESSENTIAL OIL - 11087

Peak	RT (min)	Compound	%
95	69,3	METHYLISOEUGENOL	0,13
96	69,7	SESQUITERPENIC OXIDE	0,03
97	70,7	ALIPHATIC ALCOHOL	0,01
98	70,9	CARVACROL	0,02
99	71,6	ELEMICINE	2,65
100	72,6	SESQUITERPENOL	0,01
101	72,8	EUGENYL ACETATE	0,02
102	73,1	MYRISTICINE	7,22
103	74,8	AROMATIC COMPONENT	0,01
104	76,8	ISOEUGENOL	0,70
105	78,0	MANOYL OXIDE	0,01
106	79,0	ALIPHATIC ESTER	0,01
107	79,4	Trans-ISOELEMICINE	0,06
108	80,4	AROMATIC COMPONENT	0,03
109	85,2	METHOXY EUGENOL	0,21
110	92,2	MYRISTIC ACID	0,02
111	100,4	PALMITIC ACID	0,07
		<b>TOTAL</b>	<b>99,86</b>

**Disclaimer & Caution**

Prior to use, please refer to all relevant technical information specific to the product. The information contained in this document is obtained from current and reliable sources. New Directions Aromatics Inc. provides the information contained herein, but makes no representation as to its comprehensiveness or accuracy. Individuals receiving this information must exercise their independent judgment in determining its appropriateness for a particular purpose. The user of the product is solely responsible for compliance with all laws and regulations applying to the use of the product, including intellectual property rights of third parties. As the ordinary or otherwise use(s) of this product is outside the control of New Directions Aromatics Inc., no representation or warranty - expressed or implied - is made as to the effect(s) of such use(s), (including damage or injury), or the results obtained. The liability of New Directions Aromatics Inc. is limited to the value of the goods and does not include any consequential loss. New Directions Aromatics Inc. shall not be liable for any errors or delays in the content or for any actions taken in reliance thereon. New Directions Aromatics Inc. shall not be responsible for any damages resulting from the use of or reliance upon this information.