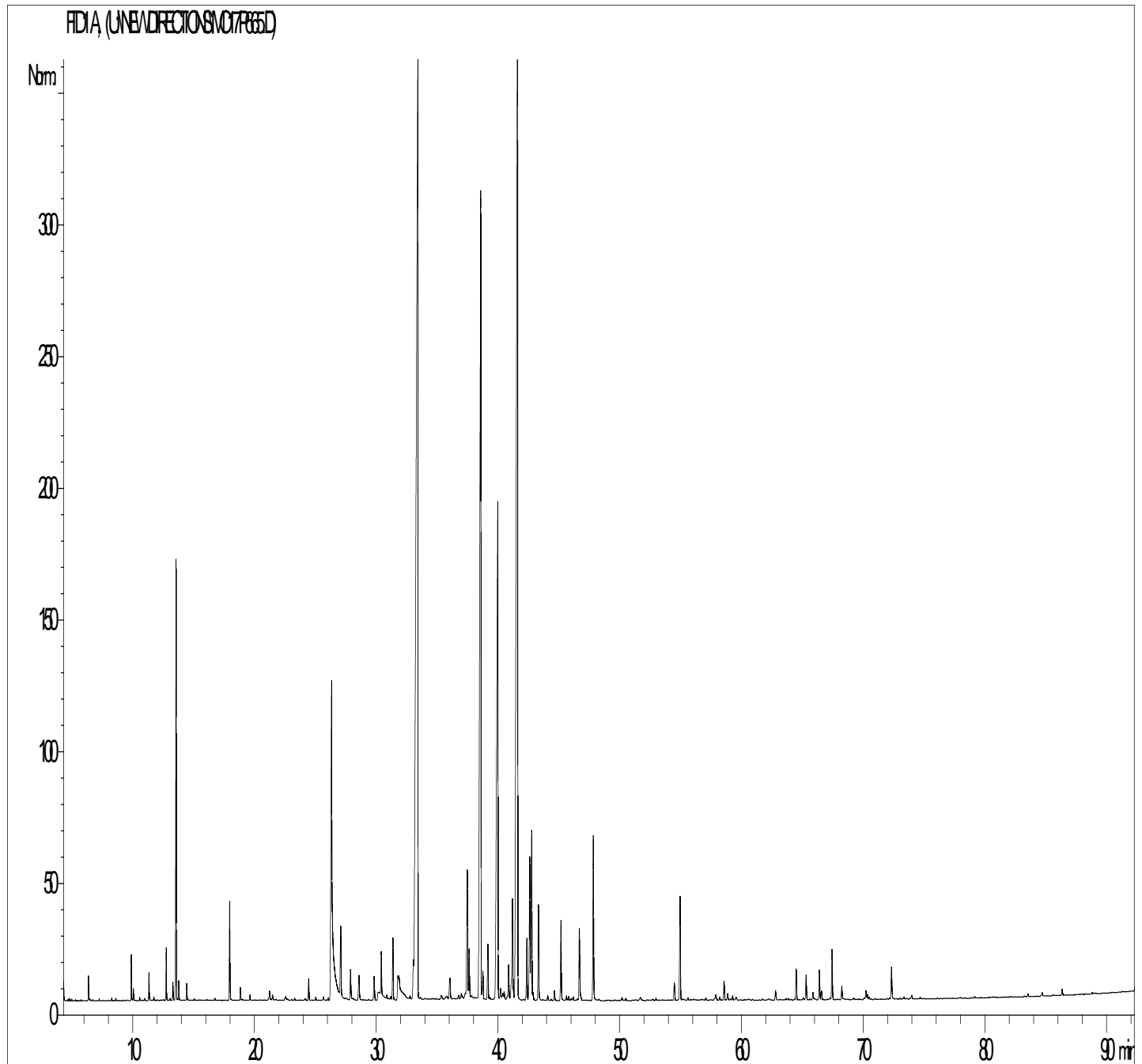




GCMS ANALYSIS

PRODUCT NAME: MELISSA LEAF ORGANIC ESSENTIAL OIL - 50064

DATE: February 9, 2018



Due to volume turnover, this report is not lot specific. It is representative of the quality of this oil produced by the manufacturer of this product. Specific lots may vary slightly as is the case in natural products.



GCMS ANALYSIS (cont'd.)
PRODUCT NAME: MELISSA LEAF ORGANIC ESSENTIAL OIL - 50064

Peak	RT (min)	COMPOUND name	%
1	6,3	alpha-PINENE	0,11
2	6,4	alph-THUYENE	0,02
3	7,2	CAMPHENE	0,01
4	8,2	beta-PINENE	0,02
5	8,6	SABINENE	0,01
6	9,8	beta-MYRCENE	0,27
7	10,0	alpha-PHELLANDRENE	0,06
8	10,1	psi-LIMONENE	0,01
9	10,5	alpha-TERPINENE	0,02
10	10,9	1,8-CINEOLE, 2,3-DEHYDRO-	0,01
11	11,4	LIMONENE	0,19
12	11,7	beta-PHELLANDRENE	0,02
13	12,5	2-ETHYL FURAN	0,01
14	12,7	Cis-beta-OCIMENE	0,36
15	13,0	ALIPHATIC ESTER	0,01
16	13,3	gamma-TERPINENE	0,14
17	13,5	Trans-beta-OCIMENE	3,33
18	13,7	3-OCTANONE	0,14
19	14,4	p-CYMENE	0,13
20	14,5	HEXYL ACETATE	0,01
21	15,0	TERPINOLENE	0,02
22	16,1	ALIPHATIC ESTER	0,01
23	16,7	ACETATE DE 3-HEXEN-1-OL	0,02
24	17,9	6-METHYL-5-HEPTEN-2-ONE	0,80
25	18,8	ROSE cis-OXIDE	0,11
26	19,6	ROSE trans-OXIDE	0,05
27	21,1	FENCHONE	0,02
28	21,2	NONANAL	0,08
29	21,5	PERILLENE	0,05
30	22,5	PHOTOCITRAL ISOMER	0,06

Disclaimer & Caution:

Please refer to all relevant technical information specific to the product, prior to use. The information contained in this document is obtained from current and reliable sources. New Directions Aromatics Inc. provides the information contained herein, but makes no representation as to its comprehensiveness or accuracy. Individuals receiving this information must exercise their independent judgment in determining its appropriateness for a particular purpose. The user of the product is solely responsible for compliance with all laws and regulations applying to the use of the products, including intellectual property rights of third parties. As the ordinary or otherwise use(s) of this product is outside the control of New Directions Aromatics Inc., no representation or warranty, expressed or implied, is made as to the effect(s) of such use(s), (including damage or injury), or the results obtained. The liability of New Directions Aromatics Inc. is limited to the value of the goods and does not include any consequential loss. New Directions Aromatics Inc. shall not be liable for any errors or delays in the content, or for any actions taken in reliance thereon. New Directions Aromatics Inc. shall not be responsible for any damages resulting from use of or reliance upon this information. In the event of any dispute, the Customer hereby agrees that Jurisdiction is limited to the province of Ontario.

GCMS ANALYSIS (cont'd.)
PRODUCT NAME: MELISSA LEAF ORGANIC ESSENTIAL OIL - 50064

Peak	RT (min)	Compound name	%
31	22,6	COMPOUND Mw=150	0,03
32	23,0	ALIPHATIC ALCOHOL	0,01
33	23,3	ALIPHATIC ESTER	0,02
34	24,2	SESQUITERPENE	0,04
35	24,4	1-OCTEN-3-OL	0,19
36	25,0	alpha-CUBEBENE	0,03
37	25,6	NERYL OXIDE	0,04
38	26,0	delta-ELEMENE	0,02
39	26,3	CITRONELLAL	5,85
40	26,4	ISOGERANIAL	0,38
41	27,0	alpha-COPAENE	0,89
42	27,8	ISONERAL	0,32
43	28,5	beta-BOURBONENE	0,30
44	29,8	beta1-CUBEBENE	0,27
45	30,0	PHOTOCITRAL A	0,59
46	30,4	LINALOL	0,37
47	30,8	LINALYL ACETATE	0,04
48	31,2	ISOPULEGOL	0,04
49	31,3	METHYL CITRONELLATE	0,59
50	31,7	PHOTOCITRAL B	0,89
51	31,8	epsilon-CADINENE	0,27
52	32,3	BORNYL ACETATE	0,04
53	32,7	alpha-trans-BERGAMOTENE	0,03
54	33,0	beta-ELEMENE	0,38
55	33,4	beta-CARYOPHYLLENE	22,83
56	35,3	CADINA-3,5-DIENE	0,06
57	35,8	SESQUITERPENE	0,07
58	36,0	ALLO-AROMADENDRENE	0,29
59	36,7	SESQUITERPENE	0,03
60	36,9	ZONARENE	0,05

Disclaimer & Caution:

Please refer to all relevant technical information specific to the product, prior to use. The information contained in this document is obtained from current and reliable sources. New Directions Aromatics Inc. provides the information contained herein, but makes no representation as to its comprehensiveness or accuracy. Individuals receiving this information must exercise their independent judgment in determining its appropriateness for a particular purpose. The user of the product is solely responsible for compliance with all laws and regulations applying to the use of the products, including intellectual property rights of third parties. As the ordinary or otherwise use(s) of this product is outside the control of New Directions Aromatics Inc., no representation or warranty, expressed or implied, is made as to the effect(s) of such use(s), (including damage or injury), or the results obtained. The liability of New Directions Aromatics Inc. is limited to the value of the goods and does not include any consequential loss. New Directions Aromatics Inc. shall not be liable for any errors or delays in the content, or for any actions taken in reliance thereon. New Directions Aromatics Inc. shall not be responsible for any damages resulting from use of or reliance upon this information. In the event of any dispute, the Customer hereby agrees that Jurisdiction is limited to the province of Ontario.

GCMS ANALYSIS (cont'd.)
PRODUCT NAME: MELISSA LEAF ORGANIC ESSENTIAL OIL - 50064

Peak	RT (min)	Compound name	%
61	37,0	ESTRAGOLE	0,02
62	37,3	METHYL NERATE	0,07
63	37,4	alpha-HUMULENE	1,49
64	37,6	E-beta-FARNESENE	0,57
65	38,5	NERAL	12,61
66	38,7	gamma-MUUROLENE	0,31
67	39,1	METHYL GERANATE	0,59
68	39,3	SESQUITERPENE	0,03
69	39,9	GERMACRENE D	8,63
70	40,2	SESQUITERPENE	0,14
71	40,4	beta-BISABOLENE	0,07
72	40,5	SESQUITERPENE	0,10
73	40,8	beta-SELINENE	0,41
74	41,1	alpha-SELINENE	0,17
75	41,2	alpha-MUUROLENE	1,17
76	41,6	GERANIAL	19,19
77	42,3	alpha-FARNESENE	0,61
78	42,6	GERANYL ACETATE	1,53
79	42,7	delta-CADINENE	1,97
80	42,8	gamma-CADINENE	0,08
81	43,3	CITRONELLOL	0,93
82	44,0	CADINA-1,4-DIENE	0,05
83	44,6	alpha-AMORPHENE	0,11
84	45,1	NEROL	0,78
85	45,6	Cis-ISOGERANIOL	0,04
86	45,8	Trans-ISOGERANIOL	0,04
87	46,0	beta-DAMASCENONE	0,03
88	46,2	AROMATIC COMPOUND	0,03
89	46,5	GERMACRENE B	0,02
90	46,6	Trans-ANETHOL	0,81

Disclaimer & Caution:

Please refer to all relevant technical information specific to the product, prior to use. The information contained in this document is obtained from current and reliable sources. New Directions Aromatics Inc. provides the information contained herein, but makes no representation as to its comprehensiveness or accuracy. Individuals receiving this information must exercise their independent judgment in determining its appropriateness for a particular purpose. The user of the product is solely responsible for compliance with all laws and regulations applying to the use of the products, including intellectual property rights of third parties. As the ordinary or otherwise use(s) of this product is outside the control of New Directions Aromatics Inc., no representation or warranty, expressed or implied, is made as to the effect(s) of such use(s), (including damage or injury), or the results obtained. The liability of New Directions Aromatics Inc. is limited to the value of the goods and does not include any consequential loss. New Directions Aromatics Inc. shall not be liable for any errors or delays in the content, or for any actions taken in reliance thereon. New Directions Aromatics Inc. shall not be responsible for any damages resulting from use of or reliance upon this information. In the event of any dispute, the Customer hereby agrees that Jurisdiction is limited to the province of Ontario.

GCMS ANALYSIS (cont'd.)
PRODUCT NAME: MELISSA LEAF ORGANIC ESSENTIAL OIL - 50064

Peak	RT (min)	Compound name	%
91	47,8	GERANIOL	1,65
92	50,2	Epi-CUBEBOL	0,03
93	50,5	HUMULENE OXIDE	0,02
94	51,6	CUBEBOL	0,05
95	52,9	SESQUITERPENOL	0,03
96	54,4	ISOCARYOPHYLLENE OXIDE	0,19
97	54,9	CARYOPHYLLENE OXIDE	1,15
98	55,6	SESQUITERPENIC OXIDE	0,03
99	57,0	AROMATIC COMPOUND	0,03
100	57,8	Epoxy-6,7-HUMULENE	0,09
101	58,2	NEROLIDOL	0,03
102	58,5	SESQUITERPENOL	0,19
103	58,8	Epi-CUBEBOL	0,09
104	59,2	SESQUITERPENOL	0,04
105	59,5	CUBEBOL	0,05
106	62,7	PENTADECANONE TRIMETHYL	0,10
107	64,5	T-CADINOL	0,32
108	65,3	alpha-MUUROLOL	0,26
109	65,8	delta-CADINOL	0,08
110	66,4	CARVACROL	0,30
111	66,5	GERANYL-alpha-TERPINENE	0,09
112	67,4	alpha-CADINOL	0,54
113	68,2	CITRONELIC ACID	0,13
114	70,2	NERIC ACID	0,12
115	70,3	CARYOPHYLLA-3,7-DIEN-6-OL	0,05
116	72,3	GERANIC ACID	0,35
117	73,9	SESQUITERPENOL	0,05
118	83,5	AROMATIC COMPOUND	0,03
119	84,7	PHYTOL	0,04
120	86,3	AROMATIC COMPOUND	0,07
121	92,3	AROMATIC COMPOUND	0,04
		TOTAL	99,90

Disclaimer & Caution:

Please refer to all relevant technical information specific to the product, prior to use. The information contained in this document is obtained from current and reliable sources. New Directions Aromatics Inc. provides the information contained herein, but makes no representation as to its comprehensiveness or accuracy. Individuals receiving this information must exercise their independent judgment in determining its appropriateness for a particular purpose. The user of the product is solely responsible for compliance with all laws and regulations applying to the use of the products, including intellectual property rights of third parties. As the ordinary or otherwise use(s) of this product is outside the control of New Directions Aromatics Inc., no representation or warranty, expressed or implied, is made as to the effect(s) of such use(s), (including damage or injury), or the results obtained. The liability of New Directions Aromatics Inc. is limited to the value of the goods and does not include any consequential loss. New Directions Aromatics Inc. shall not be liable for any errors or delays in the content, or for any actions taken in reliance thereon. New Directions Aromatics Inc. shall not be responsible for any damages resulting from use of or reliance upon this information. In the event of any dispute, the Customer hereby agrees that Jurisdiction is limited to the province of Ontario.