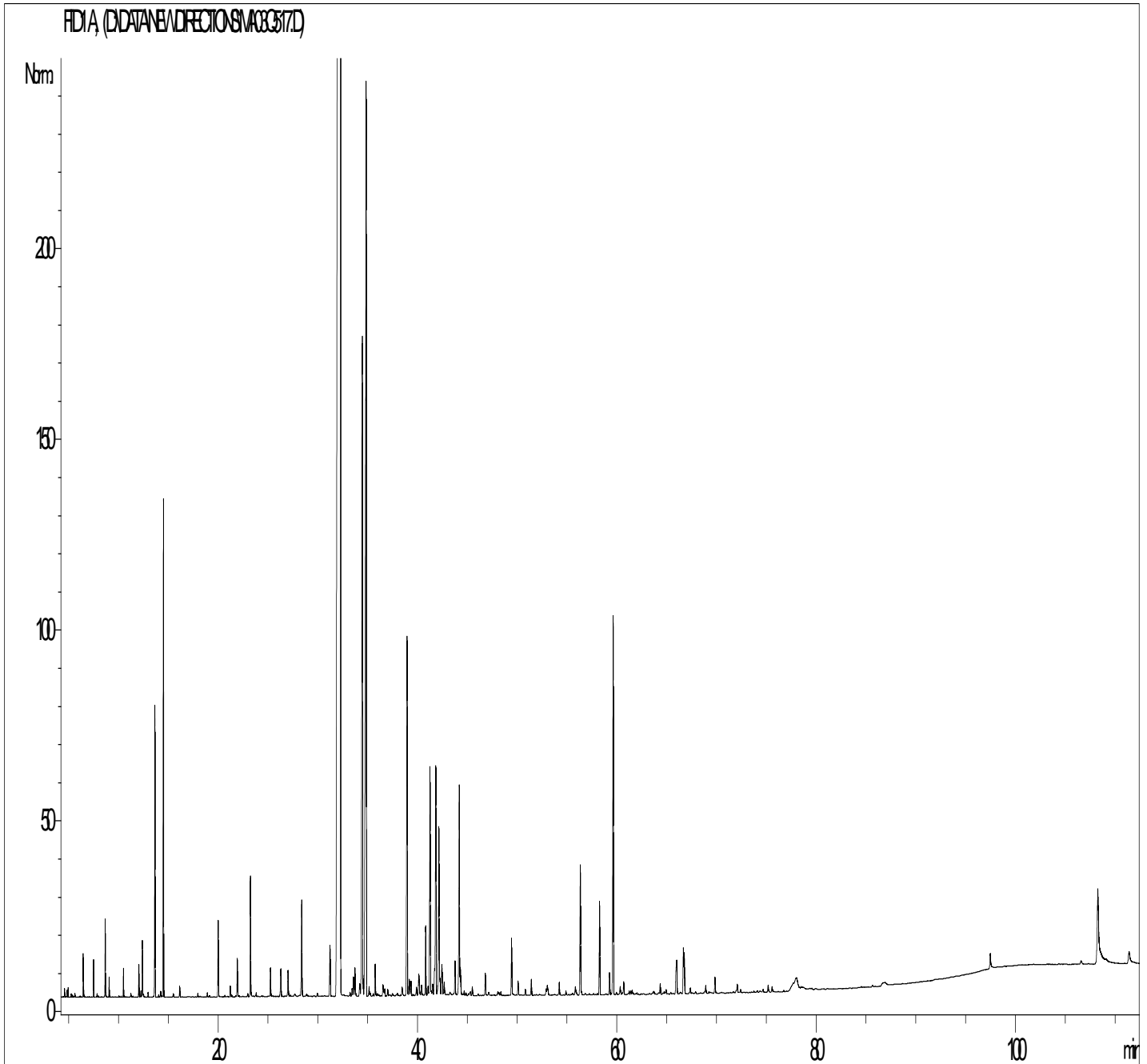




GCMS ANALYSIS

PRODUCT NAME: MICHELIA ALBA LEAF ESSENTIAL OIL - 11173

DATE: April 6, 2018



Due to volume turnover, this report is not lot specific. It is representative of the quality of this oil produced by the manufacturer of this product. Specific lots may vary slightly as is the case in natural products.



GCMS ANALYSIS (cont'd.)

PRODUCT NAME: MICHELIA ALBA LEAF ESSENTIAL OIL - 11173

Peak	RT (min)	COMPOUND name	%
1	4,0	ACETONE	0,01
2	4,5	ETHANE	0,01
3	4,6	FURAN,3-METHYL	0,01
4	4,8	BUTANAL, 2-METHYL	0,01
5	4,9	ISOVALERALDEHYDE	0,01
6	5,0	ETHYL ALCOHOL	0,01
7	5,2	FURAN, 2-METHYL	0,01
8	5,4	BUTYRIC ACID, 2-METHYL, METHYL ESTER	0,01
9	5,6	2-PENTANONE	0,01
10	6,4	alpha-PINENE	0,09
11	6,5	alpha-THUYENE	0,01
12	6,6	ALIPHATIC ESTER	0,01
13	7,5	CAMPHENE	0,09
14	7,8	HEXANAL	0,01
15	8,6	beta-PINENE	0,20
16	9,0	SABINENE	0,05
17	10,4	beta-MYRCENE	0,08
18	11,2	alpha-TERPINENE	0,01
19	12,0	LIMONENE	0,10
20	12,2	ISOAMYL ALCOHOL	0,02
21	12,4	1,8-CINEOLE	0,18
22	12,5	Cis-ARBUSCULON	0,01
23	12,9	2-HEXANAL	0,01
24	13,6	Cis-beta-OCIMENE	0,94
25	14,0	Trans-ARBUSCULON	0,01
26	14,2	gamma-TERPINENE	0,02
27	14,5	Trans-beta-OCIMENE	1,69
28	15,5	p-CYMENE	0,02
29	16,1	TERPINOLENE	0,04
30	17,9	3-HEXEN-1-OL ACETATE	0,02

Disclaimer & Caution:

Please refer to all relevant technical information specific to the product, prior to use. The information contained in this document is obtained from current and reliable sources. New Directions Aromatics Inc. provides the information contained herein, but makes no representation as to its comprehensiveness or accuracy. Individuals receiving this information must exercise their independent judgment in determining its appropriateness for a particular purpose. The user of the product is solely responsible for compliance with all laws and regulations applying to the use of the products, including intellectual property rights of third parties. As the ordinary or otherwise use(s) of this product is outside the control of New Directions Aromatics Inc., no representation or warranty, expressed or implied, is made as to the effect(s) of such use(s), (including damage or injury), or the results obtained. The liability of New Directions Aromatics Inc. is limited to the value of the goods and does not include any consequential loss. New Directions Aromatics Inc. shall not be liable for any errors or delays in the content, or for any actions taken in reliance thereon. New Directions Aromatics Inc. shall not be responsible for any damages resulting from use of or reliance upon this information. In the event of any dispute, the Customer hereby agrees that Jurisdiction is limited to the province of Ontario.

GCMS ANALYSIS (cont'd.)
PRODUCT NAME: MICHELIA ALBA LEAF ESSENTIAL OIL - 11173

Peak	RT (min)	COMPOUND name	%
31	18,9	2-HEXEN-1-OL, ACETATE	0,01
32	19,1	5-HEPTEN-2-ONE, 6-METHYL-	0,01
33	19,9	1-HEXANOL	0,27
34	21,2	ALLO-OCIMENE ISOMER	0,04
35	21,9	3-HEXEN-1-OL	0,15
36	22,9	GALBANOLENE	0,01
37	23,2	2-HEXEN-1-OL	0,45
38	23,8	ALIPHATIC ALCOHOL	0,02
39	25,2	LINALOOL, cis-OXIDE	0,12
40	26,2	alpha-CUBEBENE	0,13
41	26,9	LINALOOL, trans-OXIDE	0,12
42	27,6	SESQUITERPENE	0,03
43	28,4	alpha-COPAENE	0,45
44	28,8	COMPOUND Mw=138	0,02
45	28,9	ALIPHATIC ESTER	0,01
46	29,9	beta-BOURBONENE	0,02
47	31,2	beta1-CUBEBENE	0,26
48	32,3	LINALOOL	70,02
49	33,2	alpha,cis-BERGAMOTENE	0,01
50	33,4	alpha-SANTALENE	0,03
51	33,5	SESQUITERPENE	0,09
52	33,7	ELEMENE ISOMER	0,11
53	33,8	BORNYL ACETATE	0,01
54	34,2	alpha,Trans-BERGAMOTENE	0,07
55	34,4	beta-ELEMENE	3,43
56	34,8	beta-CARYOPHYLLENE	6,11
57	35,1	TERPINENE-4-OL	0,04
58	35,2	6,9-GUAIADIENE	0,01
59	35,5	ALIPHATIC ESTER	0,01
60	35,7	HOTRIENOL	0,14

Disclaimer & Caution:

Please refer to all relevant technical information specific to the product, prior to use. The information contained in this document is obtained from current and reliable sources. New Directions Aromatics Inc. provides the information contained herein, but makes no representation as to its comprehensiveness or accuracy. Individuals receiving this information must exercise their independent judgment in determining its appropriateness for a particular purpose. The user of the product is solely responsible for compliance with all laws and regulations applying to the use of the products, including intellectual property rights of third parties. As the ordinary or otherwise use(s) of this product is outside the control of New Directions Aromatics Inc., no representation or warranty, expressed or implied, is made as to the effect(s) of such use(s), (including damage or injury), or the results obtained. The liability of New Directions Aromatics Inc. is limited to the value of the goods and does not include any consequential loss. New Directions Aromatics Inc. shall not be liable for any errors or delays in the content, or for any actions taken in reliance thereon. New Directions Aromatics Inc. shall not be responsible for any damages resulting from use of or reliance upon this information. In the event of any dispute, the Customer hereby agrees that Jurisdiction is limited to the province of Ontario.

GCMS ANALYSIS (cont'd.)

PRODUCT NAME: MICHELIA ALBA LEAF ESSENTIAL OIL - 11173

Peak	RT (min)	COMPOUND name	%
61	35,9	ISOSATIVENE	0,01
62	36,1	SESQUITERPENE	0,01
63	36,5	TERPENYL ACETATE ISOMER	0,05
64	36,6	ALIPHATIC ESTER	0,02
65	36,7	CADINA-3,5-DIENE	0,03
66	36,9	ALIPHATIC ACETATE	0,03
67	37,4	SESQUITERPENE	0,01
68	37,9	SESQUITERPENE	0,01
69	38,4	ZONARENE	0,04
70	38,9	alpha-HUMULENE	1,80
71	39,2	ESTRAGOL	0,07
72	39,3	gamma-SELINENE	0,07
73	39,8	Z-beta-FARNESENE	0,04
74	40,1	gamma-MUUROLENE	0,14
75	40,4	SESQUITERPENE	0,05
76	40,8	alpha-TERPINEOL	0,29
77	41,0	BORNEOL	0,04
78	41,2	GERMACRENE D	1,13
79	41,3	VALENCENE	0,02
80	41,5	MUUROLADIENE ISOMER	0,05
81	41,7	Alpha-BULNESENE	0,10
82	41,8	beta-SELINENE	1,14
83	42,1	alpha-SELINENE	0,83
84	42,2	alpha-MUUROLENE	0,06
85	42,4	beta-BISABOLENE	0,18
86	42,6	SESQUITERPENE	0,06
87	43,2	PYRANIC LINALOOL cis-OXIDE	0,03
88	43,7	alpha-FARNESENE	0,14
89	44,2	delta-CADINENE	1,00
90	44,3	gamma-CADINENE	0,12

Disclaimer & Caution:

Please refer to all relevant technical information specific to the product, prior to use. The information contained in this document is obtained from current and reliable sources. New Directions Aromatics Inc. provides the information contained herein, but makes no representation as to its comprehensiveness or accuracy. Individuals receiving this information must exercise their independent judgment in determining its appropriateness for a particular purpose. The user of the product is solely responsible for compliance with all laws and regulations applying to the use of the products, including intellectual property rights of third parties. As the ordinary or otherwise use(s) of this product is outside the control of New Directions Aromatics Inc., no representation or warranty, expressed or implied, is made as to the effect(s) of such use(s), (including damage or injury), or the results obtained. The liability of New Directions Aromatics Inc. is limited to the value of the goods and does not include any consequential loss. New Directions Aromatics Inc. shall not be liable for any errors or delays in the content, or for any actions taken in reliance thereon. New Directions Aromatics Inc. shall not be responsible for any damages resulting from use of or reliance upon this information. In the event of any dispute, the Customer hereby agrees that Jurisdiction is limited to the province of Ontario.

GCMS ANALYSIS (cont'd.)

PRODUCT NAME: MICHELIA ALBA LEAF ESSENTIAL OIL - 11173

Peak	RT (min)	COMPOUND name	%
91	44,6	PYRANIC LINALOOL trans-OXIDE	0,02
92	44,8	beta-SESQUIPELLANDRENE	0,01
93	45,1	METHYL SALICYLATE	0,01
94	45,3	SESQUITERPENE	0,03
95	45,4	CADINA-1,4-DIENE	0,04
96	46,8	NEROL	0,09
97	47,1	SESQUITERPENE Mw=202	0,02
98	48,0	GERMACRENE B	0,02
99	48,1	Trans-ANETHOL	0,02
100	48,3	CALAMENENE	0,02
101	49,4	GERANIOL	0,24
102	50,0	CAPROIC ACID	0,06
103	50,8	SAFROL	0,03
104	51,4	épi-CUBEBOL	0,07
105	52,8	alpha-CALACORENE	0,03
106	53,0	PHENYLETHYL ALCOHOL	0,07
107	54,2	CUBEBOL	0,06
108	54,8	HEXENYLIC ESTER	0,01
109	55,8	ISOCARYOPHYLLENE EPOXIDE	0,06
110	56,3	CARYOPHYLLENE EPOXIDE	0,64
111	58,3	METHYLEUGENOL	0,40
112	59,2	6,7-HUMULENE, EPOXIDE	0,11
113	59,6	NEROLIDOL	1,75
114	60,3	epi-CUBENOL	0,04
115	60,7	CUBENOL	0,06
116	61,2	CAPRYLIC ACID	0,03
117	61,4	ALIPHATIC ESTER	0,02
118	61,5	ALIPHATIC ESTER	0,02
119	63,6	AROMATIC COMPOUND	0,05
120	64,3	TERPENIC ALCOHOL	0,06

Disclaimer & Caution:

Please refer to all relevant technical information specific to the product, prior to use. The information contained in this document is obtained from current and reliable sources. New Directions Aromatics Inc. provides the information contained herein, but makes no representation as to its comprehensiveness or accuracy. Individuals receiving this information must exercise their independent judgment in determining its appropriateness for a particular purpose. The user of the product is solely responsible for compliance with all laws and regulations applying to the use of the products, including intellectual property rights of third parties. As the ordinary or otherwise use(s) of this product is outside the control of New Directions Aromatics Inc., no representation or warranty, expressed or implied, is made as to the effect(s) of such use(s), (including damage or injury), or the results obtained. The liability of New Directions Aromatics Inc. is limited to the value of the goods and does not include any consequential loss. New Directions Aromatics Inc. shall not be liable for any errors or delays in the content, or for any actions taken in reliance thereon. New Directions Aromatics Inc. shall not be responsible for any damages resulting from use of or reliance upon this information. In the event of any dispute, the Customer hereby agrees that Jurisdiction is limited to the province of Ontario.

GCMS ANALYSIS (cont'd.)

PRODUCT NAME: MICHELIA ALBA LEAF ESSENTIAL OIL - 11173

Peak	RT (min)	COMPOUND name	%
121	64,9	SESQUITERPENOL	0,02
122	65,8	2-PHENYLETHYL TIGLATE	0,12
123	65,9	T-CADINOL	0,13
124	66,6	METHYLISOEUGENOL	0,22
125	66,7	alpha-MUUROLOL	0,18
126	67,3	SESQUITERPENOL	0,03
127	68,9	alpha-CADINOL	0,04
128	69,8	EUDESMA-7(11)-EN-4-OL	0,07
129	72,0	SESQUITERPENIC OXIDE	0,06
130	72,4	SESQUITERPENIC OXIDE	0,02
131	75,2	FARNESOL	0,03
132	75,5	SESQUITERPENOL Mw=220	0,02
133	97,4	PALMITIC ACIDE	0,08
134	106,5	STEARIC ACID	0,03
135	108,2	OLEIC ACID	1,09
136	111,4	AROMATIC COMPOUND	0,12
		TOTAL	99,82

Disclaimer & Caution:

Please refer to all relevant technical information specific to the product, prior to use. The information contained in this document is obtained from current and reliable sources. New Directions Aromatics Inc. provides the information contained herein, but makes no representation as to its comprehensiveness or accuracy. Individuals receiving this information must exercise their independent judgment in determining its appropriateness for a particular purpose. The user of the product is solely responsible for compliance with all laws and regulations applying to the use of the products, including intellectual property rights of third parties. As the ordinary or otherwise use(s) of this product is outside the control of New Directions Aromatics Inc., no representation or warranty, expressed or implied, is made as to the effect(s) of such use(s), (including damage or injury), or the results obtained. The liability of New Directions Aromatics Inc. is limited to the value of the goods and does not include any consequential loss. New Directions Aromatics Inc. shall not be liable for any errors or delays in the content, or for any actions taken in reliance thereon. New Directions Aromatics Inc. shall not be responsible for any damages resulting from use of or reliance upon this information. In the event of any dispute, the Customer hereby agrees that Jurisdiction is limited to the province of Ontario.