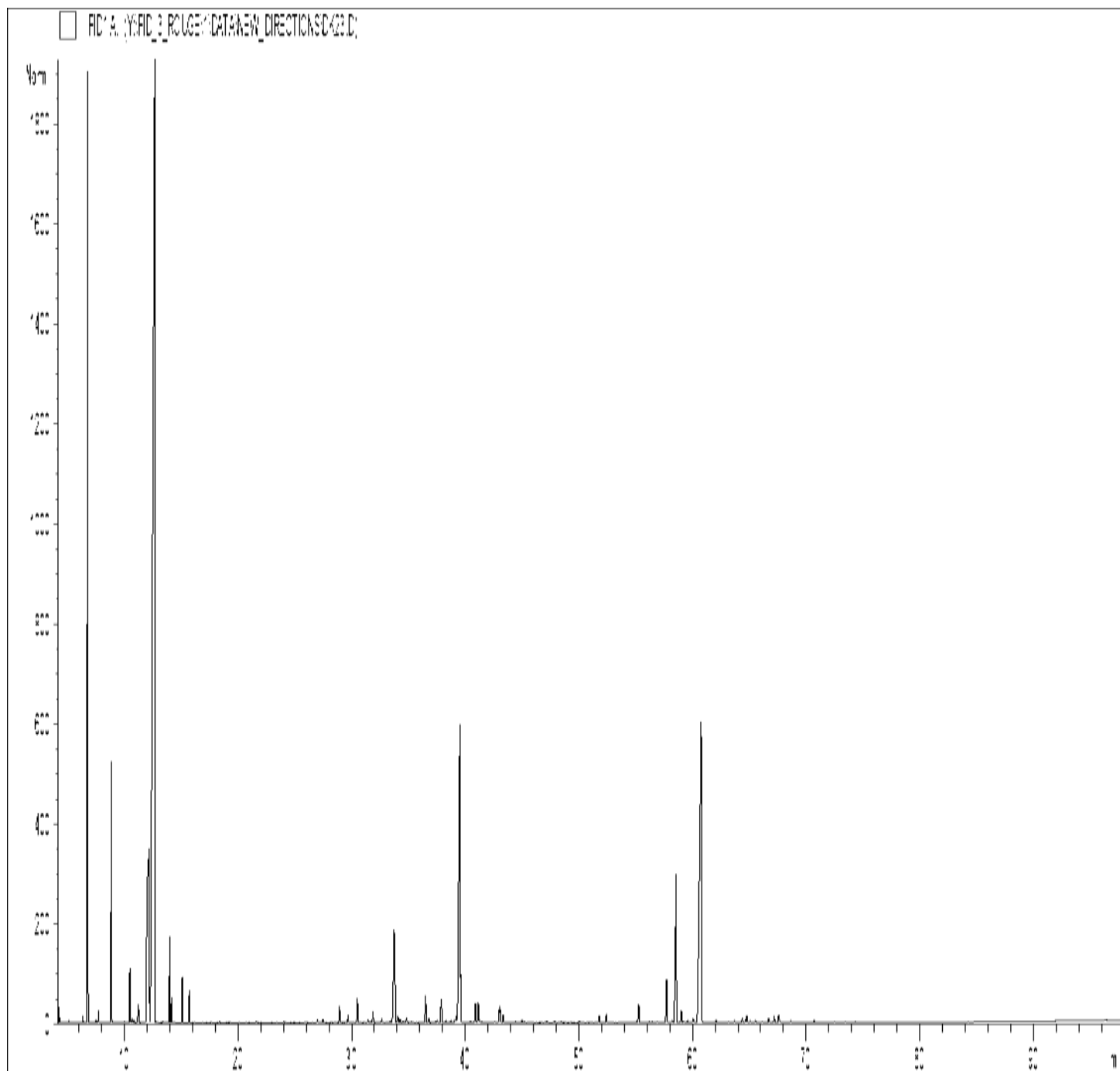


GCMS ANALYSIS

PRODUCT NAME: NIAOULI ESSENTIAL OIL - 11100

DATE: December 16, 2020



Due to volume turnover, this report is not lot specific, It is representative of the quality of this oil produced by the manufacturer of this product, Specific lots may vary slightly as is the case in natural products,

GCMS ANALYSIS (cont'd.)

PRODUCT NAME: NIAOULI ESSENTIAL OIL - 11100

Peak	RT (min)	Component name	%
1	5,04	BUTANAL, 2-METHYL-	0,01
2	5,09	ISOVALERALDEHYDE	0,01
3	5,12	ETHANOL	0,01
4	6,35	METHYL 2-METHYLBUTYRATE	0,06
5	6,81	alpha-PINENE	12,38
6		alpha-THUYENE	
7	7,52	alpha-FENCHENE	0,02
8	7,73	CAMPHENE	0,11
9	8,88	beta-PINENE	2,95
10	9,19	SABINENE	0,01
11	10,51	beta-MYRCENE	0,79
12	10,69	alpha-PHELLANDRENE	0,06
13	10,85	psi-LIMONENE	0,04
14	11,26	alpha-TERPINENE	0,37
15	11,62	1,8-CINEOLE, 2,3-DEHYDRO-	0,01
16	12,24	LIMONENE	7,82
17	12,76	1,8-CINEOLE	42,23
18	12,82	MENTHATRIENE ISOMER	0,01
19	13,41	cis-beta-OCIMENE	0,02
20	14,03	gamma-TERPINENE	0,96
21	14,19	trans-beta-OCIMENE	0,25
22	14,44	STYRENE	0,01
23	15,13	p-CYMENE	0,49
24	15,75	TERPINOLENE	0,36
25	17,65	PINOL	0,01
26	18,39	5-HEPTEN-2-ONE, 6-METHYL-	0,02
27	19,29	ROSE cis-OXIDE	0,01
28	24,04	alpha,p-DIMETHYLSTYRENE	0,02
29	24,21	METHOXY STYRENE	0,01
30	25,88	LINALOOL trans-OXIDE	0,01

Disclaimer & Caution:

Please refer to all relevant technical information specific to the product, prior to use. The information contained in this document is obtained from current and reliable sources. New Directions Aromatics Inc. provides the information contained herein, but makes no representation as to its comprehensiveness or accuracy. Individuals receiving this information must exercise their independent judgment in determining its appropriateness for a particular purpose. The user of the product is solely responsible for compliance with all laws and regulations applying to the use of the products, including intellectual property rights of third parties. As the ordinary or otherwise use(s) of this product is outside the control of New Directions Aromatics Inc., no representation or warranty, expressed or implied, is made as to the effect(s) of such use(s), (including damage or injury), or the results obtained. The liability of New Directions Aromatics Inc. is limited to the value of the goods and does not include any consequential loss. New Directions Aromatics Inc. shall not be liable for any errors or delays in the content, or for any actions taken in reliance thereon. New Directions Aromatics Inc. shall not be responsible for any damages resulting from use of or reliance upon this information. In the event of any dispute, the Customer hereby agrees that Jurisdiction is limited to the province of Ontario.

GCMS ANALYSIS (cont'd.)

PRODUCT NAME: NIAOULI ESSENTIAL OIL - 11100

Peak	RT (min)	Component name	%
31	26,05	alpha-CUBEBENE	0,01
32	27,01	SESQUITERPENE	0,05
33	27,48	alpha-COPAENE	0,05
34	28,95	BENZALDEHYDE	0,25
35	29,70	alpha-GURJUNENE	0,12
36	30,51	LINALOOL	0,33
37	31,46	ISOPULGEOL	0,06
38	31,69	PINOCARVONE	0,03
39	31,89	NEOISOPULEGOL	0,16
40	32,65	FENCHOL	0,06
41	33,42	CAMPHENE HYDRATE	0,03
42	33,77	beta-CARYOPHYLLENE	2,01
43	33,82	TERPINENE-4-OL	0,51
44	34,09	beta-GUAIENE	0,11
45	34,29	AROMADENDRENE	0,06
46	34,53	SESQUITERPENE	0,03
47	34,84	METHYL BENZOATE	0,09
48	35,25	SESQUITERPENE	0,02
49	35,46	MYRTENAL	0,01
50	36,54	ALLO-AROMADENDRENE	0,43
51	36,78	trans-PINOCARVEOL	0,09
52	37,11	GURJUNENE ISOMER	0,01
53	37,41	ETHYL BENZOATE	0,02
54	37,53	ZONARENE	0,04
55	37,80	delta-TERPINEOL	0,20
56	37,90	alpha-HUMULENE	0,27
57	38,32	gamma-SELINENE	0,04
58	38,57	4,5-di-epi-ARISTOLOCHENE	0,01
59	38,75	LAVANDULAL	0,04
60	39,12	gamma-MUUROLENE	0,04

Disclaimer & Caution:

Please refer to all relevant technical information specific to the product, prior to use. The information contained in this document is obtained from current and reliable sources. New Directions Aromatics Inc. provides the information contained herein, but makes no representation as to its comprehensiveness or accuracy. Individuals receiving this information must exercise their independent judgment in determining its appropriateness for a particular purpose. The user of the product is solely responsible for compliance with all laws and regulations applying to the use of the products, including intellectual property rights of third parties. As the ordinary or otherwise use(s) of this product is outside the control of New Directions Aromatics Inc., no representation or warranty, expressed or implied, is made as to the effect(s) of such use(s), (including damage or injury), or the results obtained. The liability of New Directions Aromatics Inc. is limited to the value of the goods and does not include any consequential loss. New Directions Aromatics Inc. shall not be liable for any errors or delays in the content, or for any actions taken in reliance thereon. New Directions Aromatics Inc. shall not be responsible for any damages resulting from use of or reliance upon this information. In the event of any dispute, the Customer hereby agrees that Jurisdiction is limited to the province of Ontario.

GCMS ANALYSIS (cont'd.)

PRODUCT NAME: NIAOULI ESSENTIAL OIL - 11100

Peak	RT (min)	Component name	%
61	39,24	LEDENE	0,12
62	39,56	alpha-TERPINEOL	7,54
63	39,65	TERPENYL ACETATE	0,57
64	40,47	GERMACRENE D	0,04
65	40,73	EREMOPHILENE	0,01
66	40,92	beta-SELINENE	0,25
67	41,04	alpha-MUUROLENE	0,02
68	41,17	alpha-SELINENE	0,28
69	41,32	BICYCLOGERMACRENE	0,02
70	41,46	CARVONE	0,02
71	42,61	alpha-FARNESENE	0,03
72	43,04	delta-CADINENE	0,28
73	43,13	gamma-CADINENE	0,18
74	43,35	CITRONELLOL	0,12
75	44,19	MENTHADIENOL ISOMER	0,01
76	44,42	CADINA-1,4-DIENE	0,02
77	44,73	MYRTENOL	0,02
78	45,01	alpha-AMORPHENE	0,05
79	45,25	SESQUITERPENE Mw=202	0,02
80	47,15	CALAMENENE	0,02
81	47,19	trans-CARVEOL	0,01
82	47,80	GERANIOL	0,03
83	47,87	p-CYMENE-8-OL	0,01
84	48,42	exo-2-HYDROXYCINEOLE	0,03
85	49,26	BENZYL ALCOHOL	0,01
86	50,07	COMPOUND Mw=152	0,02
87	51,75	alpha-CALACORENE	0,03
88	51,81	METHYL THIO BENZOATE	0,10
89	52,44	PALUSTROL	0,14
90	52,69	AROMATIC COMPOUND	0,01

Disclaimer & Caution:

Please refer to all relevant technical information specific to the product, prior to use. The information contained in this document is obtained from current and reliable sources. New Directions Aromatics Inc. provides the information contained herein, but makes no representation as to its comprehensiveness or accuracy. Individuals receiving this information must exercise their independent judgment in determining its appropriateness for a particular purpose. The user of the product is solely responsible for compliance with all laws and regulations applying to the use of the products, including intellectual property rights of third parties. As the ordinary or otherwise use(s) of this product is outside the control of New Directions Aromatics Inc., no representation or warranty, expressed or implied, is made as to the effect(s) of such use(s), (including damage or injury), or the results obtained. The liability of New Directions Aromatics Inc. is limited to the value of the goods and does not include any consequential loss. New Directions Aromatics Inc. shall not be liable for any errors or delays in the content, or for any actions taken in reliance thereon. New Directions Aromatics Inc. shall not be responsible for any damages resulting from use of or reliance upon this information. In the event of any dispute, the Customer hereby agrees that Jurisdiction is limited to the province of Ontario.

GCMS ANALYSIS (cont'd.)

PRODUCT NAME: NIAOULI ESSENTIAL OIL - 11100

Peak	RT (min)	Component name	%
91	55,11	KETONIC COMPOUND	0,03
92	55,28	CARYOPHYLLENE EPOXIDE	0,30
93	56,20	KETONIC COMPOUND	0,02
94	56,49	ALIPHATIC ESTER	0,03
95	56,90	epi-GLOBULOL	0,03
96	57,75	LEDOL	0,72
97	58,22	epoxy-6,7-HUMULENE	0,04
98	58,61	NEROLIDOL	3,04
99	59,04	GLEENOL	0,21
100	59,23	epi-CUBENOL	0,03
101	59,58	CUBENOL	0,03
102	60,08	GLOBULOL	0,10
103	60,81	VIRIDIFLOROL	10,13
104	61,48	GUAIOL	0,02
105	61,65	10-epi-gamma-EUDESOL	0,02
106	62,09	ROSIFOLIOL	0,05
107	62,44	EUDESOL ISOMER	0,01
108	63,18	SESQUITERPENOL	0,02
109	63,71	AROMATIC COMPOUND	0,03
110	64,41	EUGENOL	0,07
111	64,68	gamma-EUDESOL	0,05
112	64,80	T-CADINOL	0,11
113	65,11	AGAROSPIROL	0,03
114	65,56	alpha-MUUROLOL	0,05
115	66,13	delta-CADINOL	0,02
116	66,71	BULNESOL	0,07
117	67,21	alpha-EUDESOL	0,12
118	67,61	beta-EUDESOL	0,13
119	67,68	alpha-CADINOL	0,03
120	68,68	EUDESMA-7(11)-EN-4-OL	0,04

Disclaimer & Caution:

Please refer to all relevant technical information specific to the product, prior to use. The information contained in this document is obtained from current and reliable sources. New Directions Aromatics Inc. provides the information contained herein, but makes no representation as to its comprehensiveness or accuracy. Individuals receiving this information must exercise their independent judgment in determining its appropriateness for a particular purpose. The user of the product is solely responsible for compliance with all laws and regulations applying to the use of the products, including intellectual property rights of third parties. As the ordinary or otherwise use(s) of this product is outside the control of New Directions Aromatics Inc., no representation or warranty, expressed or implied, is made as to the effect(s) of such use(s), (including damage or injury), or the results obtained. The liability of New Directions Aromatics Inc. is limited to the value of the goods and does not include any consequential loss. New Directions Aromatics Inc. shall not be liable for any errors or delays in the content, or for any actions taken in reliance thereon. New Directions Aromatics Inc. shall not be responsible for any damages resulting from use of or reliance upon this information. In the event of any dispute, the Customer hereby agrees that Jurisdiction is limited to the province of Ontario.

GCMS ANALYSIS (cont'd.)

PRODUCT NAME: NIAOULI ESSENTIAL OIL - 11100

Peak	RT (min)	Component name	%
121	70,72	CARYOPHYLLA-2,6-DIEN-5-alpha-OL	0,04
122	72,50	SESQUITERPENIC EPOXIDE	0,02
123	73,46	FARNESOL	0,02
124	74,32	SESQUITERPENIC EPOXIDE	0,01
125	84,85	PHYTOL	0,01
		TOTAL	99,93

Disclaimer & Caution:

Please refer to all relevant technical information specific to the product, prior to use. The information contained in this document is obtained from current and reliable sources. New Directions Aromatics Inc. provides the information contained herein, but makes no representation as to its comprehensiveness or accuracy. Individuals receiving this information must exercise their independent judgment in determining its appropriateness for a particular purpose. The user of the product is solely responsible for compliance with all laws and regulations applying to the use of the products, including intellectual property rights of third parties. As the ordinary or otherwise use(s) of this product is outside the control of New Directions Aromatics Inc., no representation or warranty, expressed or implied, is made as to the effect(s) of such use(s), (including damage or injury), or the results obtained. The liability of New Directions Aromatics Inc. is limited to the value of the goods and does not include any consequential loss. New Directions Aromatics Inc. shall not be liable for any errors or delays in the content, or for any actions taken in reliance thereon. New Directions Aromatics Inc. shall not be responsible for any damages resulting from use of or reliance upon this information. In the event of any dispute, the Customer hereby agrees that Jurisdiction is limited to the province of Ontario.