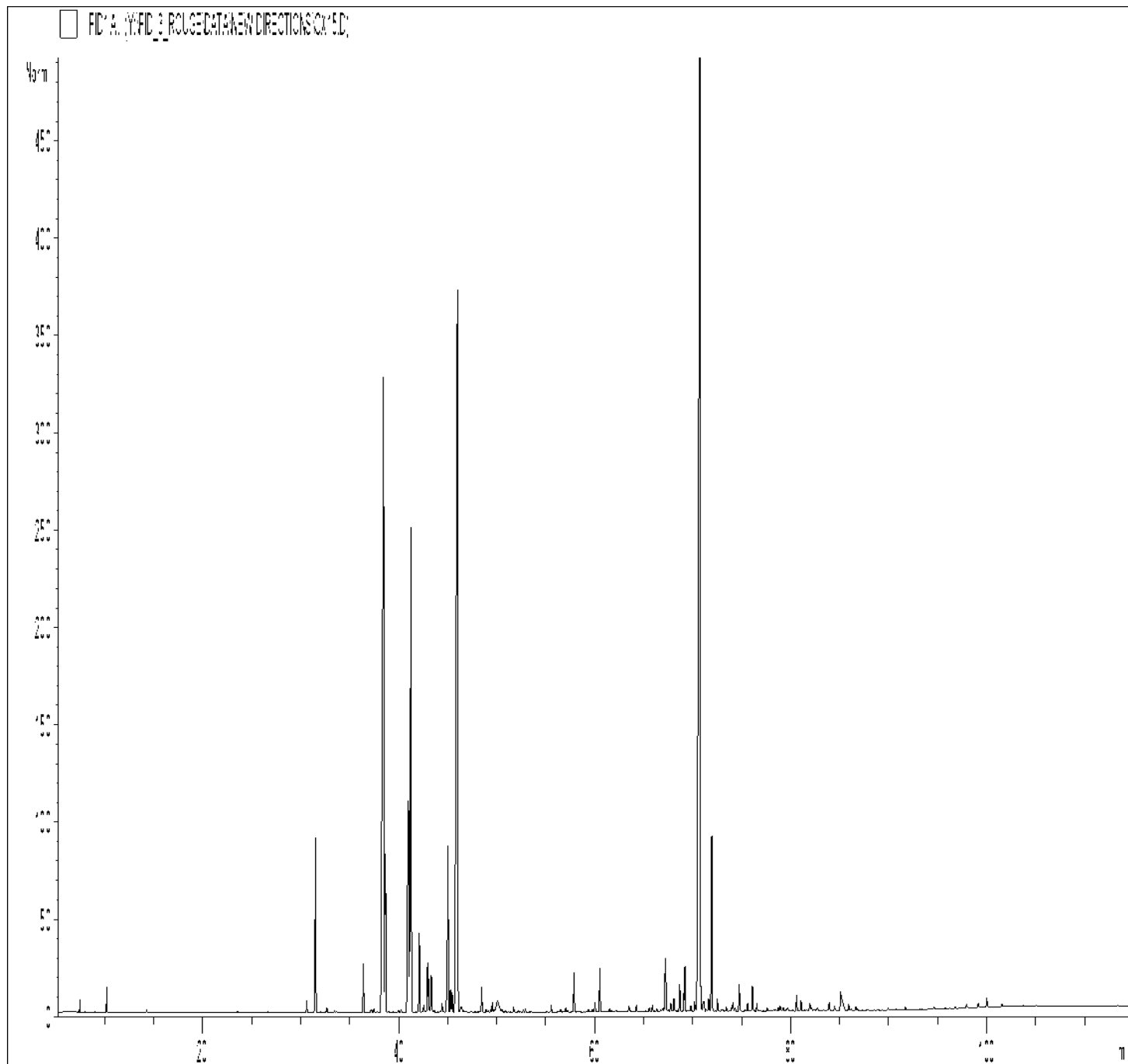


GCMS ANALYSIS

PRODUCT NAME: PATCHOULI ESSENTIAL OIL (DARK) – 11109

DATE: October 22, 2020



Due to volume turnover, this report is not lot specific, It is representative of the quality of this oil produced by the manufacturer of this product, Specific lots may vary slightly as is the case in natural products,

GCMS ANALYSIS (cont'd,)

PRODUCT NAME: PATCHOULI ESSENTIAL OIL (DARK) – 11109

Peak	RT (min)	Compound	%
1	4,99	ACETONE	0,01
2	7,45	alpha-PINENE	0,07
3	10,21	beta-PINENE	0,18
4	11,48	2-HEPTANONE	0,01
5	14,28	LIMONENE	0,02
6	23,54	4-METHYL-2-PENTANONE, 4-HYDROXY-	0,01
7	29,19	1-OCTEN-3-OL	0,01
8	30,62	delta-ELEMENE	0,14
9	31,54	beta-PATCHOULENE	2,24
10	32,63	alpha-COPAENE	0,02
11	32,69	PENTADECANE	0,05
12	33,44	SESQUITERPENE	0,02
13	33,65	beta-BOURBONENE	0,01
14	36,40	CYCLOSEYCHELLENE	0,60
15	37,20	ISOCARYOPHYLLENE	0,02
16	37,23	SESQUITERPENE	0,04
17	37,78	ELEMENE ISOMER	0,02
18	38,50	alpha-GUAIENE	13,79
19	38,66	beta-CARYOPHYLLENE	2,94
20	39,97	COPACAMPHENE	0,04
21	40,25	SESQUITERPENE	0,04
22	41,03	SEYCHELLENE	4,67
23	41,28	alpha-PATCHOULENE	8,13
24	41,79	GERMACRENE A	0,02
25	42,12	gamma-PATCHOULENE	0,96
26	42,57	SELINENE ISOMER	0,12
27	42,95	alpha-HUMULENE	0,60
28	43,07	SELINENE ISOMER	0,39
29	43,34	E-beta-FARNESENE	0,56
30		gamma-SELINENE	

Disclaimer & Caution:

Please refer to all relevant technical information specific to the product, prior to use. The information contained in this document is obtained from current and reliable sources. New Directions Aromatics Inc. provides the information contained herein, but makes no representation as to its comprehensiveness or accuracy. Individuals receiving this information must exercise their independent judgment in determining its appropriateness for a particular purpose. The user of the product is solely responsible for compliance with all laws and regulations applying to the use of the products, including intellectual property rights of third parties. As the ordinary or otherwise use(s) of this product is outside the control of New Directions Aromatics Inc., no representation or warranty, expressed or implied, is made as to the effect(s) of such use(s), (including damage or injury), or the results obtained. The liability of New Directions Aromatics Inc. is limited to the value of the goods and does not include any consequential loss. New Directions Aromatics Inc. shall not be liable for any errors or delays in the content, or for any actions taken in reliance thereon. New Directions Aromatics Inc. shall not be responsible for any damages resulting from use of or reliance upon this information. In the event of any dispute, the Customer hereby agrees that Jurisdiction is limited to the province of Ontario.

GCMS ANALYSIS (cont'd,)

PRODUCT NAME: PATCHOULI ESSENTIAL OIL (DARK) – 11109

Peak	RT (min)	Compound	%
31	43,63	4,5-di-epi-ARISTOLOCHENE	0,03
32	44,18	gamma-MUUROLENE	0,02
33	44,43	CALARENE	0,13
34	44,91	SESQUITERPENE Mw=202	0,14
35	45,05	ACIPHYLLENE	2,42
36	45,29	PATCHOULENE ISOMER	0,32
37	45,46	GURJUNENE ISOMER	0,26
38	46,05	alpha-BULNESENE	17,27
39	46,11	beta-SELINENE	0,21
40	46,35	alpha-SELINENE	0,08
41	46,47	SESQUITERPENE	0,09
42	46,62	BICYCLOGERMACRENE	0,02
43	46,82	ALIPHATIC ESTER	0,01
44	47,80	E,E-alpha-FARNESENE	0,01
45	48,23	delta-CADINENE	0,02
46	48,48	SELINA-3,7-DIENE	0,34
47	48,93	SESQUITERPENE Mw=202	0,03
48	49,41	SESQUITERPENE Mw=202	0,03
49	49,56	AROMATIC COMPOUND	0,13
50	49,73	SESQUITERPENE Mw=202	0,04
51	50,08	DEHYDRO AROMADENDRENE Mw=202	0,59
52	50,55	SESQUITERPENE Mw=202	0,04
53	51,73	SESQUITERPENE Mw=202	0,07
54	52,22	GERMACRENE B	0,02
55	52,71	SESQUITERPENE Mw=202	0,03
56	52,94	SESQUITERPENIC EPOXIDE	0,04
57	55,57	SESQUITERPENIC EPOXIDE	0,09
58	56,51	AROMATIC COMPOUND	0,03
59	56,85	SESQUITERPENIC EPOXIDE	0,05
60	57,05	HUMULENE EPOXIDE	0,02

Disclaimer & Caution:

Please refer to all relevant technical information specific to the product, prior to use. The information contained in this document is obtained from current and reliable sources. New Directions Aromatics Inc. provides the information contained herein, but makes no representation as to its comprehensiveness or accuracy. Individuals receiving this information must exercise their independent judgment in determining its appropriateness for a particular purpose. The user of the product is solely responsible for compliance with all laws and regulations applying to the use of the products, including intellectual property rights of third parties. As the ordinary or otherwise use(s) of this product is outside the control of New Directions Aromatics Inc., no representation or warranty, expressed or implied, is made as to the effect(s) of such use(s), (including damage or injury), or the results obtained. The liability of New Directions Aromatics Inc. is limited to the value of the goods and does not include any consequential loss. New Directions Aromatics Inc. shall not be liable for any errors or delays in the content, or for any actions taken in reliance thereon. New Directions Aromatics Inc. shall not be responsible for any damages resulting from use of or reliance upon this information. In the event of any dispute, the Customer hereby agrees that Jurisdiction is limited to the province of Ontario.

GCMS ANALYSIS (cont'd,)

PRODUCT NAME: PATCHOULI ESSENTIAL OIL (DARK) – 11109

Peak	RT (min)	Compound	%
61	57,89	SESQUITERPENIC EPOXIDE	0,49
62	59,37	SESQUITERPENIC EPOXIDE	0,04
63	59,77	SESQUITERPENIC EPOXIDE	0,04
64	60,03	ISOCARYOPHYLLENE EPOXIDE	0,13
65	60,53	CARYOPHYLLENE EPOXIDE	0,55
66	61,52	COMPOUND Mw=218	0,04
67	62,71	AROMATIC COMPOUND	0,03
68	63,49	epoxy-6,7-HUMULENE	0,08
69	63,63	NEROLIDOL	0,02
70	64,26	AROMATIC COMPOUND Mw=220	0,09
71	65,17	epi-CUBENOL	0,02
72	65,58	CUBENOL	0,05
73	65,91	VIRIDIFLOROL	0,10
74	66,33	SESQUITERPENIC EPOXIDE	0,05
75	66,74	GUIAOL	0,03
76	66,93	SESQUITERPENOL	0,06
77	67,06	COMPOUND Mw=200	0,05
78	67,21	NORPATCHOULENOL	0,75
79	67,27	1,5-epoxy-alpha-GUAIENE	0,22
80	67,73	AROMATIC COMPOUND	0,15
81	68,08	SESQUITERPENOL	0,22
82	68,67	SESQUITERPENOL Mw=222	0,36
83	69,11	SESQUITERPENOL	0,22
84	69,23	BULNESOL ISOMER	0,57
85	69,85	SESQUITERPENOL	0,09
86	70,22	SESQUITERPENOL	0,16
87	70,80	PATCHOULOL	30,16
88	70,84	SESQUITERPENOL	0,23
89	71,04	SESQUITERPENIC EPOXIDE	0,18
90	71,19	SESQUITERPENOL	0,12

Disclaimer & Caution:

Please refer to all relevant technical information specific to the product, prior to use, The information contained in this document is obtained from current and reliable sources, New Directions Aromatics Inc, provides the information contained herein, but makes no representation as to its comprehensiveness or accuracy, Individuals receiving this information must exercise their independent judgment in determining its appropriateness for a particular purpose, The user of the product is solely responsible for compliance with all laws and regulations applying to the use of the products, including intellectual property rights of third parties, As the ordinary or otherwise use(s) of this product is outside the control of New Directions Aromatics Inc., no representation or warranty, expressed or implied, is made as to the effect(s) of such use(s), (including damage or injury), or the results obtained, The liability of New Directions Aromatics Inc, is limited to the value of the goods and does not include any consequential loss, New Directions Aromatics Inc, shall not be liable for any errors or delays in the content, or for any actions taken in reliance thereon, New Directions Aromatics Inc, shall not be responsible for any damages resulting from use of or reliance upon this information, In the event of any dispute, the Customer hereby agrees that Jurisdiction is limited to the province of Ontario,

GCMS ANALYSIS (cont'd,)

PRODUCT NAME: PATCHOULI ESSENTIAL OIL (DARK) – 11109

Peak	RT (min)	Compound	%
91	71,39	SESQUITERPENONE	0,04
92	71,64	SESQUITERPENOL Mw=222	0,18
93	71,95	POGOSTOL	2,41
94	72,55	SESQUITERPENIC OXIDE	0,18
95	73,03	SESQUITERPENOL	0,06
96	73,44	SESQUITERPENOL	0,06
97	73,99	EUDESMA-7-EN-4-OL	0,08
98	74,12	beta-NOOTKATOL	0,12
99	74,75	PATCHOULENONE Mw=218	0,37
100	75,33	SESQUITERPENOL Mw=220	0,12
101	76,08	SESQUITERPENIC OXIDE	0,36
102	76,54	SESQUITERPENONE Mw=218	0,10
103	77,55	AROMATIC COMPOUND Mw=210	0,06
104	78,74	SESQUITERPENIC OXIDE	0,05
105	79,23	SESQUITERPENONE Mw=218	0,08
106	79,69	SESQUITERPENIC OXIDE	0,06
107	80,61	SESQUITERPENOL Mw=222	0,21
108	81,06	SESQUITERPENONE Mw=218	0,13
109	81,95	AROMATIC COMPOUND	0,12
110	82,09	SESQUITERPENOL	0,05
111	82,65	SESQUITERPENONE Mw=218	0,07
112	83,94	PHYTOL	0,13
113	84,48	COMPOUND Mw=236	0,09
114	84,95	POGOSTONE	0,72
115	85,92	AROMATIC COMPOUND	0,10
116	86,64	AROMATIC COMPOUND Mw=234	0,06
117	89,93	AROMATIC COMPOUND Mw=234	0,03
118	97,95	AROMATIC COMPOUND Mw=234	0,05
119	99,15	AROMATIC COMPOUND	0,06
120	100,02	COMPOUND Mw=216	0,13
121	101,55	CORYMBOLONE	0,05
		TOTAL	99,94

Disclaimer & Caution:

Please refer to all relevant technical information specific to the product, prior to use, The information contained in this document is obtained from current and reliable sources, New Directions Aromatics Inc, provides the information contained herein, but makes no representation as to its comprehensiveness or accuracy, Individuals receiving this information must exercise their independent judgment in determining its appropriateness for a particular purpose, The user of the product is solely responsible for compliance with all laws and regulations applying to the use of the products, including intellectual property rights of third parties, As the ordinary or otherwise use(s) of this product is outside the control of New Directions Aromatics Inc,, no representation or warranty, expressed or implied, is made as to the effect(s) of such use(s), (including damage or injury), or the results obtained, The liability of New Directions Aromatics Inc, is limited to the value of the goods and does not include any consequential loss, New Directions Aromatics Inc, shall not be liable for any errors or delays in the content, or for any actions taken in reliance thereon, New Directions Aromatics Inc, shall not be responsible for any damages resulting from use of or reliance upon this information, In the event of any dispute, the Customer hereby agrees that Jurisdiction is limited to the province of Ontario,