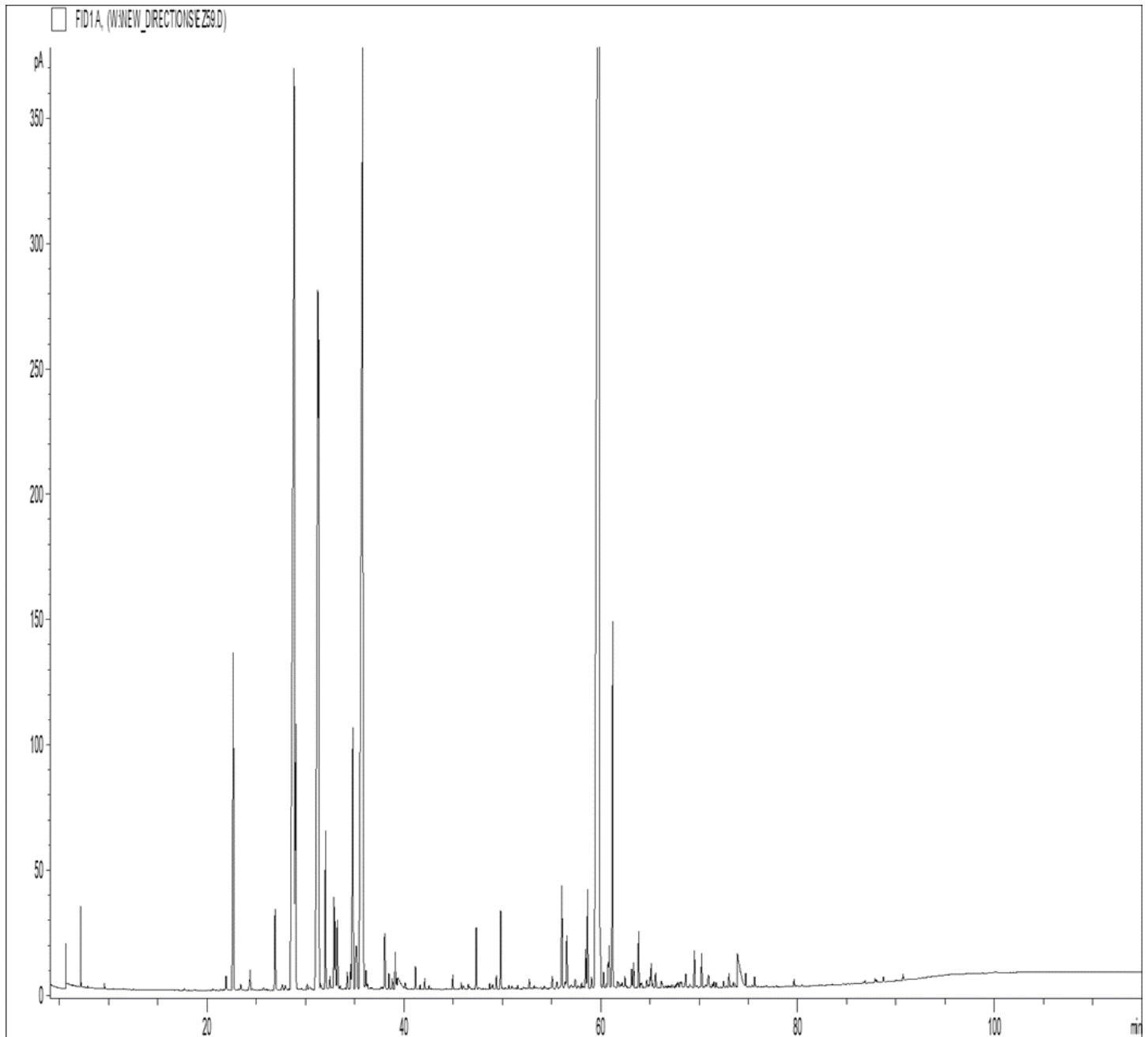


GCMS ANALYSIS

PRODUCT NAME: PATCHOULI ESSENTIAL OIL (LIGHT) - 11235

DATE: July 13, 2021



Due to volume turnover, this report is not lot specific, It is representative of the quality of this oil produced by the manufacturer of this product, Specific lots may vary slightly as is the case in natural products,

GCMS ANALYSIS (cont'd.)

PRODUCT NAME: PATCHOULI ESSENTIAL OIL (LIGHT) - 11235

Peak	RT (min)	Compound	%
1	5,68	alpha-PINENE	0,08
2	7,18	beta-PINENE	0,19
3	9,59	LIMONENE	0,02
4	21,94	delta-ELEMENE	0,09
5	22,67	beta-PATCHOULENE	2,19
6	23,44	alpha-COPAENE	0,03
7	24,30	COMPOUND Mw=200	0,02
8	24,40	PENTADECANE	0,11
9	25,75	SESQUITERPENE Mw=202	0,02
10	26,93	CYCLOSEYCHELLENE	0,55
11	27,66	SESQUITERPENE	0,05
12	27,96	ELEMENE ISOMER	0,05
13	28,86	beta-ELEMENE	12,81
14		alpha-GUAIENE	
15	29,05	beta-CARYOPHYLLENE	2,39
16	29,64	SESQUITERPENE	0,01
17	30,19	COPACAMPHENE	0,05
18	30,49	SESQUITERPENE	0,04
19	31,27	SEYCHELLENE	7,61
20	31,35	alpha-PATCHOULENE	4,36
21	31,55	SESQUITERPENE	0,05
22	32,06	gamma-PATCHOULENE	0,92
23	32,50	SESQUITERPENE	0,10
24	32,92	alpha-HUMULENE	0,54
25	33,04	SESQUITERPENE	0,40
26	33,25	E-beta-FARNESENE	0,49
27	33,56	gamma-SELINENE	0,04
28	34,03	4,5-di-epi-ARISTOLOCHENE	0,02
29	34,26	CALARENE	0,13
30	34,61	SESQUITERPENE Mw=202	0,15

Disclaimer & Caution

Please refer to all relevant technical information specific to the product, prior to use. The information contained in this document is obtained from current and reliable sources, New Directions Aromatics Inc, provides the information contained herein, but makes no representation as to its comprehensiveness or accuracy. Individuals receiving this information must exercise their independent judgment in determining its appropriateness for a particular purpose. The user of the product is solely responsible for compliance with all laws and regulations applying to the use of the products, including intellectual property rights of third parties. As the ordinary or otherwise use(s) of this product is outside the control of New Directions Aromatics Inc., no representation or warranty, expressed or implied, is made as to the effect(s) of such use(s), (including damage or injury), or the results obtained. The liability of New Directions Aromatics Inc, is limited to the value of the goods and does not include any consequential loss. New Directions Aromatics Inc, shall not be liable for any errors or delays in the content, or for any actions taken in reliance thereon. New Directions Aromatics Inc, shall not be responsible for any damages resulting from use of or reliance upon this information. In the event of any dispute, the Customer hereby agrees that Jurisdiction is limited to the province of Ontario.

GCMS ANALYSIS (cont'd.)

PRODUCT NAME: PATCHOULI ESSENTIAL OIL (LIGHT) - 11235

Peak	RT (min)	Compound	%
31	34,84	ACIPHYLLENE	2,27
32	35,15	PATCHOULENE ISOMER	0,28
33	35,22	beta-CHAMIGRENE	0,29
34	35,85	alpha-BULNESENE	14,83
35	35,91	beta-SELINENE	0,36
36	36,16	alpha-SELINENE	0,15
37	36,32	SESQUITERPENE Mw=202	0,04
38	36,69	SESQUITERPENE	0,02
39	37,70	alpha-FARNESENE	0,03
40	37,83	delta-CADINENE	0,02
41	38,06	7-epi-alpha-SELINENE	0,45
42		SESQUITERPENE	
43	38,49	SESQUITERPENE Mw=202	0,10
44	38,85	SESQUITERPENE Mw=202	0,08
45	39,14	SESQUITERPENE Mw=202	0,21
46	39,25	SESQUITERPENE Mw=202	0,07
47	39,41	SESQUITERPENE Mw=202	0,33
48	40,14	SESQUITERPENE Mw=202	0,06
49	41,19	SESQUITERPENE Mw=202	0,14
50	41,66	GERMACRENE B	0,03
51	42,13	SESQUITERPENE Mw=202	0,06
52	42,57	SESQUITERPENIC EPOXIDE	0,03
53	42,80	SESQUITERPENOL	0,01
54	44,99	SESQUITERPENIC EPOXIDE	0,09
55	45,84	SESQUITERPENE Mw=202	0,04
56	46,05	SESQUITERPENE Mw=202	0,03
57	46,12	COMPOUND Mw=218	0,02
58	46,55	SESQUITERPENIC EPOXIDE	0,04
59	46,66	SESQUITERPENIC EPOXIDE	0,01
60	46,72	SESQUITERPENIC EPOXIDE	0,01

Disclaimer & Caution

Please refer to all relevant technical information specific to the product, prior to use. The information contained in this document is obtained from current and reliable sources, New Directions Aromatics Inc, provides the information contained herein, but makes no representation as to its comprehensiveness or accuracy. Individuals receiving this information must exercise their independent judgment in determining its appropriateness for a particular purpose. The user of the product is solely responsible for compliance with all laws and regulations applying to the use of the products, including intellectual property rights of third parties. As the ordinary or otherwise use(s) of this product is outside the control of New Directions Aromatics Inc., no representation or warranty, expressed or implied, is made as to the effect(s) of such use(s), (including damage or injury), or the results obtained. The liability of New Directions Aromatics Inc, is limited to the value of the goods and does not include any consequential loss. New Directions Aromatics Inc, shall not be liable for any errors or delays in the content, or for any actions taken in reliance thereon. New Directions Aromatics Inc, shall not be responsible for any damages resulting from use of or reliance upon this information. In the event of any dispute, the Customer hereby agrees that Jurisdiction is limited to the province of Ontario.

GCMS ANALYSIS (*cont'd.*)

PRODUCT NAME: PATCHOULI ESSENTIAL OIL (LIGHT) - 11235

Peak	RT (min)	Compound	%
61	47,37	AROMATIC COMPOUND	0,37
62	47,69	SESQUITERPENIC EPOXIDE	0,03
63	48,73	SESQUITERPENIC EPOXIDE	0,04
64	48,91	SESQUITERPENIC EPOXIDE	0,01
65	49,02	SESQUITERPENIC EPOXIDE	0,04
66	49,42	ISOCARYOPHYLLENE EPOXIDE	0,09
67	49,85	CARYOPHYLLENE EPOXIDE	0,48
68	50,36	SESQUITERPENIC EPOXIDE	0,01
69	50,67	SESQUITERPENONE	0,03
70	50,98	SESQUITERPENIC EPOXIDE	0,04
71	51,58	SESQUITERPENIC EPOXIDE	0,03
72	52,17	SESQUITERPENOL	0,03
73	52,75	epoxy-6,7-HUMULENE	0,07
74	52,97	SESQUITERPENOL	0,01
75	53,25	NEROLIDOL	0,03
76	53,42	SESQUITERPENOL	0,02
77	53,79	CUBENOL	0,01
78	53,95	COMPOUND Mw=218	0,01
79	54,31	SESQUITERPENIC EPOXIDE	0,03
80	55,09	ELEMOL	0,06
81	55,10	SESQUITERPENIC EPOXIDE	0,05
82	55,57	SESQUITERPENOL	0,07
83	55,85	SESQUITERPENOL	0,02
84	56,06	NORPATCHOULENOL	0,69
85	56,38	AROMATIC COMPOUND	0,06
86	56,57	1,5-epoxy-alpha-GUAIENE	0,46
87	56,92	SESQUITERPENIC EPOXIDE	0,02
88	57,03	SESQUITERPENIC EPOXIDE	0,03
89	57,41	SESQUITERPENIC EPOXIDE	0,11
90	57,69	TRIMETHYL-PENTADECANONE	0,03

Disclaimer & Caution

Please refer to all relevant technical information specific to the product, prior to use. The information contained in this document is obtained from current and reliable sources. New Directions Aromatics Inc. provides the information contained herein, but makes no representation as to its comprehensiveness or accuracy. Individuals receiving this information must exercise their independent judgment in determining its appropriateness for a particular purpose. The user of the product is solely responsible for compliance with all laws and regulations applying to the use of the products, including intellectual property rights of third parties. As the ordinary or otherwise use(s) of this product is outside the control of New Directions Aromatics Inc., no representation or warranty, expressed or implied, is made as to the effect(s) of such use(s), (including damage or injury), or the results obtained. The liability of New Directions Aromatics Inc. is limited to the value of the goods and does not include any consequential loss. New Directions Aromatics Inc. shall not be liable for any errors or delays in the content, or for any actions taken in reliance thereon. New Directions Aromatics Inc. shall not be responsible for any damages resulting from use of or reliance upon this information. In the event of any dispute, the Customer hereby agrees that Jurisdiction is limited to the province of Ontario.

GCMS ANALYSIS (cont'd.)

PRODUCT NAME: PATCHOULI ESSENTIAL OIL (LIGHT) - 11235

Peak	RT (min)	Compound	%
91	57,84	SESQUITERPENIC EPOXIDE	0,02
92	58,07	SESQUITERPENIC EPOXIDE	0,04
93	58,20	SESQUITERPENONE	0,02
94	58,48	SESQUITERPENOL	0,26
95	58,68	BULNESOL	0,62
96	59,08	SESQUITERPENIC EPOXIDE	0,09
97	59,87	PATCHOULOL	34,98
98	60,29	SESQUITERPENIC EPOXIDE	0,12
99	60,57	SESQUITERPENIC EPOXIDE	0,04
100	60,77	SESQUITERPENONE	0,17
101	60,87	SESQUITERPENIC EPOXIDE	0,27
102	61,23	POGOSTOL	2,51
103	61,73	SESQUITERPENOL	0,06
104	61,81	SESQUITERPENOL	0,04
105	62,02	SESQUITERPENONE	0,04
106	62,20	SESQUITERPENIC EPOXIDE	0,05
107	62,31	SESQUITERPENIC EPOXIDE	0,02
108	62,47	SESQUITERPENIC OXIDE	0,09
109	62,61	SESQUITERPENIC OXIDE	0,02
110	63,16	EUDESMA-7(11)-EN-4-OL	0,14
111	63,36	beta-NOOTKATOL	0,16
112	63,86	SESQUITERPENONE	0,35
113	64,08	SESQUITERPENONE	0,03
114	64,19	COMPOUND Mw=220	0,04
115	64,69	SESQUITERPENIC OXIDE	0,07
116	64,89	CARYOPHYLLA-2,6-DIEN-5-alpha-OL	0,02
117	65,03	SESQUITERPENIC OXIDE	0,06
118	65,14	SESQUITERPENIC OXIDE	0,16
119	65,30	SESQUITERPENOL	0,03
120	65,58	SESQUITERPENIC OXIDE	0,12

Disclaimer & Caution

Please refer to all relevant technical information specific to the product, prior to use. The information contained in this document is obtained from current and reliable sources. New Directions Aromatics Inc. provides the information contained herein, but makes no representation as to its comprehensiveness or accuracy. Individuals receiving this information must exercise their independent judgment in determining its appropriateness for a particular purpose. The user of the product is solely responsible for compliance with all laws and regulations applying to the use of the products, including intellectual property rights of third parties. As the ordinary or otherwise use(s) of this product is outside the control of New Directions Aromatics Inc., no representation or warranty, expressed or implied, is made as to the effect(s) of such use(s), (including damage or injury), or the results obtained. The liability of New Directions Aromatics Inc. is limited to the value of the goods and does not include any consequential loss. New Directions Aromatics Inc. shall not be liable for any errors or delays in the content, or for any actions taken in reliance thereon. New Directions Aromatics Inc. shall not be responsible for any damages resulting from use of or reliance upon this information. In the event of any dispute, the Customer hereby agrees that Jurisdiction is limited to the province of Ontario.

GCMS ANALYSIS (*cont'd.*)

PRODUCT NAME: PATCHOULI ESSENTIAL OIL (LIGHT) - 11235

Peak	RT (min)	Compound	%
121	66,16	COMPOUND Mw=210	0,08
122	66,60	SESQUITERPENIC OXIDE	0,02
123	66,86	SESQUITERPENIC OXIDE	0,02
124	67,01	COMPOUND Mw=218	0,02
125	67,17	SESQUITERPENIC OXIDE	0,02
126	67,33	SESQUITERPENIC OXIDE	0,03
127	67,62	SESQUITERPENIC OXIDE	0,03
128	67,76	SESQUITERPENIC OXIDE	0,03
129	67,87	SESQUITERPENIC OXIDE	0,04
130	68,07	SESQUITERPENIC OXIDE	0,05
131	68,19	SESQUITERPENONE	0,04
132	68,66	SESQUITERPENIC OXIDE	0,13
133	69,07	SESQUITERPENONE	0,05
134	69,53	SESQUITERPENIC OXIDE	0,24
135	69,76	AROMATIC COMPOUND	0,03
136	70,26	SESQUITERPENONE	0,21
137	70,69	AROMATIC COMPOUND	0,04
138	70,95	AROMATIC COMPOUND	0,07
139	70,95	SESQUITERPENIC OXIDE	0,08
140	71,35	SESQUITERPENIC OXIDE	0,03
141	71,50	SESQUITERPENIC OXIDE	0,05
142	71,74	SESQUITERPENIC OXIDE	0,04
143	72,49	SESQUITERPENIC OXIDE	0,05
144	72,76	SESQUITERPENIC OXIDE	0,02
145	73,04	SESQUITERPENONE	0,10
146	73,23	SESQUITERPENONE	0,02
147	73,49	SESQUITERPENONE	0,04
148	73,65	AROMATIC COMPOUND	0,03
149	73,88	POGOSTONE	0,86
150	74,74	COMPOUND Mw=236	0,10

Disclaimer & Caution

Please refer to all relevant technical information specific to the product, prior to use. The information contained in this document is obtained from current and reliable sources. New Directions Aromatics Inc. provides the information contained herein, but makes no representation as to its comprehensiveness or accuracy. Individuals receiving this information must exercise their independent judgment in determining its appropriateness for a particular purpose. The user of the product is solely responsible for compliance with all laws and regulations applying to the use of the products, including intellectual property rights of third parties. As the ordinary or otherwise use(s) of this product is outside the control of New Directions Aromatics Inc., no representation or warranty, expressed or implied, is made as to the effect(s) of such use(s), (including damage or injury), or the results obtained. The liability of New Directions Aromatics Inc. is limited to the value of the goods and does not include any consequential loss. New Directions Aromatics Inc. shall not be liable for any errors or delays in the content, or for any actions taken in reliance thereon. New Directions Aromatics Inc. shall not be responsible for any damages resulting from use of or reliance upon this information. In the event of any dispute, the Customer hereby agrees that Jurisdiction is limited to the province of Ontario.

GCMS ANALYSIS (cont'd.)

PRODUCT NAME: PATCHOULI ESSENTIAL OIL (LIGHT) - 11235

Peak	RT (min)	Compound	%
151	75,65	COMPOUND Mw=218	0,08
152	76,84	SESQUITERPENIC OXIDE	0,01
153	77,86	PHYTOL	0,01
154	79,66	COMPOUND Mw=236	0,05
155	80,44	COMPOUND Mw=236	0,02
156	85,08	AROMATIC COMPOUND Mw=234	0,01
157	86,86	AROMATIC COMPOUND Mw=234	0,02
158	87,88	COMPOUND Mw=236	0,03
159	88,04	COMPOUND Mw=216	0,02
160	88,74	CORYMBOLON	0,04
161	90,73	PALMITIC ACID	0,04
		TOTAL	100,00

Disclaimer & Caution

Please refer to all relevant technical information specific to the product, prior to use. The information contained in this document is obtained from current and reliable sources. New Directions Aromatics Inc. provides the information contained herein, but makes no representation as to its comprehensiveness or accuracy. Individuals receiving this information must exercise their independent judgment in determining its appropriateness for a particular purpose. The user of the product is solely responsible for compliance with all laws and regulations applying to the use of the products, including intellectual property rights of third parties. As the ordinary or otherwise use(s) of this product is outside the control of New Directions Aromatics Inc., no representation or warranty, expressed or implied, is made as to the effect(s) of such use(s), (including damage or injury), or the results obtained. The liability of New Directions Aromatics Inc. is limited to the value of the goods and does not include any consequential loss. New Directions Aromatics Inc. shall not be liable for any errors or delays in the content, or for any actions taken in reliance thereon. New Directions Aromatics Inc. shall not be responsible for any damages resulting from use of or reliance upon this information. In the event of any dispute, the Customer hereby agrees that Jurisdiction is limited to the province of Ontario.