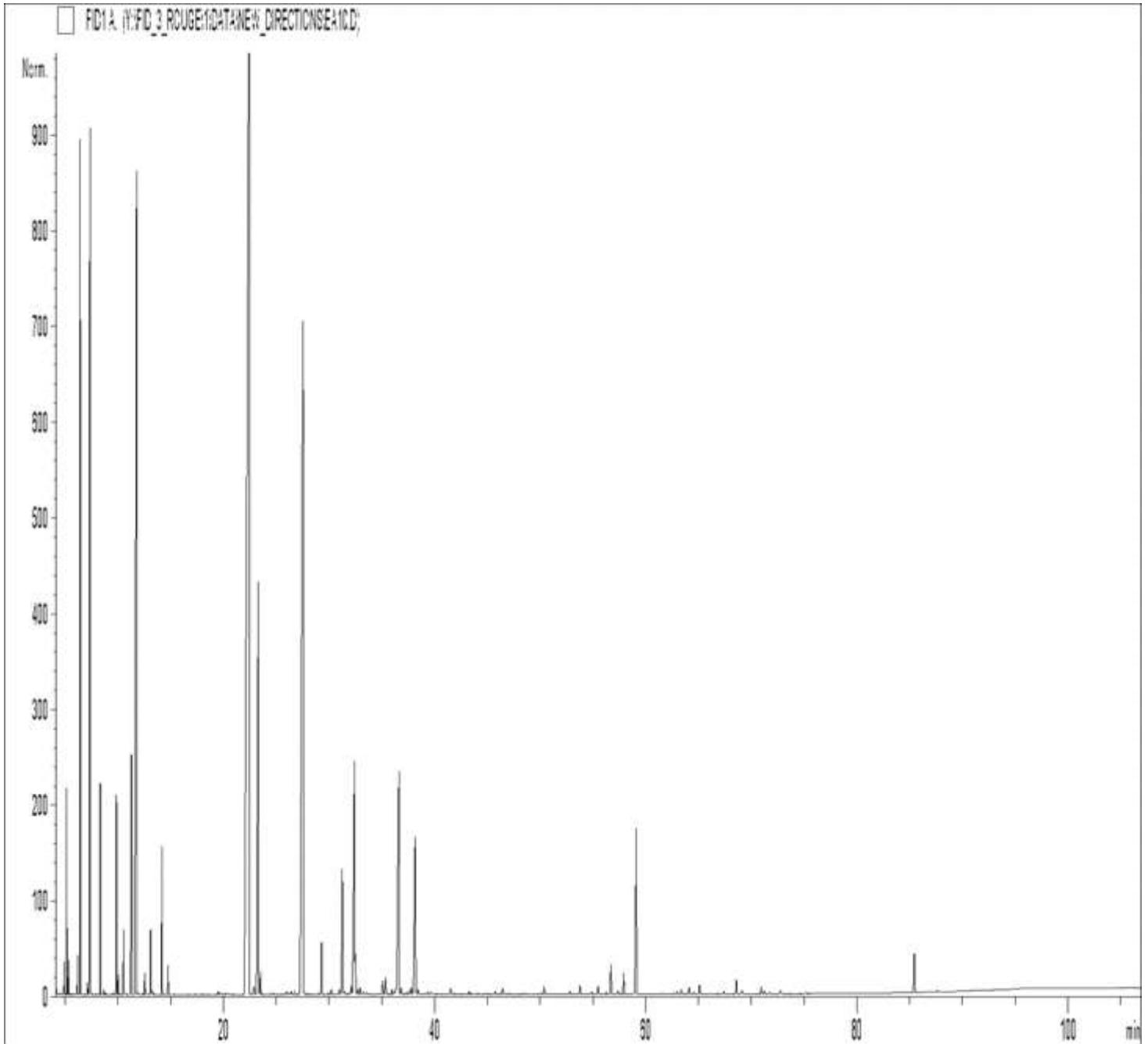


GCMS ANALYSIS

PRODUCT NAME: SAGE ORGANIC ESSENTIAL OIL - 50040

DATE: March 12, 2021



Due to volume turnover, this report is not lot specific, It is representative of the quality of this oil produced by the manufacturer of this product, Specific lots may vary slightly as is the case in natural products,

GCMS ANALYSIS (cont'd.)

PRODUCT NAME: SAGE ORGANIC ESSENTIAL OIL - 50040

Peak	RT (min)	Compound name	%
1	4,16	ACETONE	0,02
2	4,85	BUTANAL, 2-METHYL	0,04
3	4,91	ISOVALERALDEHYDE	0,12
4	5,14	Z-SALVENE	0,62
5	5,31	E-SALVENE	0,11
6	6,15	TRICYCLENE	0,16
7	6,38	alpha-PINENE	4,08
8	6,43	alpha-THUYENE	0,10
9	7,11	alpha-FENCHENE	0,06
10	7,33	CAMPHENE	5,06
11	7,54	HEXANAL	0,01
12	8,32	beta-PINENE	1,10
13	8,62	SABINENE	0,03
14	8,73	PINADIENE	0,02
15	8,87	THUYADIENE	0,01
16	9,48	delta3-CARENE	0,01
17	9,85	beta-MYRCENE	1,19
18	10,01	alpha-PHELLANDRENE	0,12
19	10,15	psi-LIMONENE	0,01
20	10,51	alpha-TERPINENE	0,42
21	11,26	LIMONENE	2,12
22	11,75	1,8-CINEOLE	10,72
23	11,85	MENTHATRIENE ISOMER	0,02
24	11,95	2-HEXENAL	0,01
25	12,37	cis-beta-OCIMENE	0,14
26	12,61	COMPOUND Mw=152	0,03
27	13,08	gamma-TERPINENE	0,44
28	13,27	trans-beta-OCIMENE	0,04
29	14,16	p-CYMENE	1,08
30	14,74	TERPINOLENE	0,21

Disclaimer & Caution

Please refer to all relevant technical information specific to the product, prior to use. The information contained in this document is obtained from current and reliable sources. New Directions Aromatics Inc. provides the information contained herein, but makes no representation as to its comprehensiveness or accuracy. Individuals receiving this information must exercise their independent judgment in determining its appropriateness for a particular purpose. The user of the product is solely responsible for compliance with all laws and regulations applying to the use of the products, including intellectual property rights of third parties. As the ordinary or otherwise use(s) of this product is outside the control of New Directions Aromatics Inc., no representation or warranty, expressed or implied, is made as to the effect(s) of such use(s), (including damage or injury), or the results obtained. The liability of New Directions Aromatics Inc. is limited to the value of the goods and does not include any consequential loss. New Directions Aromatics Inc. shall not be liable for any errors or delays in the content, or for any actions taken in reliance thereon. New Directions Aromatics Inc. shall not be responsible for any damages resulting from use of or reliance upon this information. In the event of any dispute, the Customer hereby agrees that Jurisdiction is limited to the province of Ontario.

GCMS ANALYSIS (cont'd,)

PRODUCT NAME: SAGE ORGANIC ESSENTIAL OIL - 50040

Peak	RT (min)	Compound name	%
31	19,49	1-OCTEN-3-YL ACETATE	0,03
32	19,63	3-HEXEN-1-OL	0,03
33	20,14	FENCHONE	0,02
34	20,34	NONANAL	0,03
35	20,60	3-OCTANOL	0,01
36	22,41	alpha-THUYONE	31,63
37	22,87	alpha-p-DIMETHYLSTYRENE	0,11
38	23,29	beta-THUYONE	5,94
39	23,49	1-OCTEN-3-OL	0,19
40	24,44	LINALOOL Trans-OXIDE	0,02
41	24,75	AROMATIC COMPOUND	0,02
42	25,90	alpha-CAMPHOLENAL	0,03
43	26,04	YLANGENE	0,04
44	26,40	HEXENYLIC ESTER	0,03
45	26,73	alpha-COPAENE	0,03
46	27,52	CAMPHOR	14,86
47	27,64	ALIPHATIC ALCOHOL	0,01
48	27,76	beta-BOURBONENE	0,01
49	28,35	alpha-GURJUNENE	0,01
50	35,31	beta-BOURBONENE	0,02
51	29,29	LINALOOL	0,47
52	29,87	LINALYL ACETATE	0,01
53	29,95	trans-p-MENTH-2-EN-1-OL	0,02
54	30,22	alpha-cis-BERGAMOTENE	0,07
55	30,99	ISOBORNYL ACETATE	0,06
56	31,25	BORNYL ACETATE	1,40
57	31,49	FENCHOL	0,03
58	32,07	beta-ELEMENE	0,10
59	32,42	beta-CARYOPHYLLENE	3,88
60	32,49	TERPINENE-4-OL	0,31

Disclaimer & Caution

Please refer to all relevant technical information specific to the product, prior to use. The information contained in this document is obtained from current and reliable sources, New Directions Aromatics Inc, provides the information contained herein, but makes no representation as to its comprehensiveness or accuracy. Individuals receiving this information must exercise their independent judgment in determining its appropriateness for a particular purpose. The user of the product is solely responsible for compliance with all laws and regulations applying to the use of the products, including intellectual property rights of third parties. As the ordinary or otherwise use(s) of this product is outside the control of New Directions Aromatics Inc., no representation or warranty, expressed or implied, is made as to the effect(s) of such use(s), (including damage or injury), or the results obtained. The liability of New Directions Aromatics Inc, is limited to the value of the goods and does not include any consequential loss. New Directions Aromatics Inc, shall not be liable for any errors or delays in the content, or for any actions taken in reliance thereon. New Directions Aromatics Inc, shall not be responsible for any damages resulting from use of or reliance upon this information. In the event of any dispute, the Customer hereby agrees that Jurisdiction is limited to the province of Ontario.

GCMS ANALYSIS (cont'd.)

PRODUCT NAME: SAGE ORGANIC ESSENTIAL OIL - 50040

Peak	RT (min)	Compound name	%
61	32,72	SESQUITERPENE	0,06
62	32,93	AROMADENDRENE	0,08
63	33,25	SESQUITERPENE	0,04
64	33,52	SESQUITERPENE	0,03
65	33,83	COMPOUND Mw=152	0,02
66	33,96	cis-p-MENTH-2-EN-1-OL	0,01
67	34,53	SESQUITERPENE	0,02
68	35,08	ALLO-AROMADENDRENE	0,15
69	35,35	trans-SABINYL ACETATE	0,21
70	35,95	THUYYLIC ALCOHOL ISOMER	0,05
71	36,17	ISOBORNEOL	0,03
72	36,38	SESQUITERPENE	0,10
73	36,61	alpha-HUMULENE	3,74
74	36,79	THUYYLIC ALCOHOL ISOMER	0,07
75	36,94	MYRTENYL ACETATE	0,02
76	37,36	LAVANDULAL	0,04
77	37,61	gamma-MUUROLENE	0,04
78	37,78	LEDENE	0,08
79	38,10	BORNEOL	1,66
80	38,15	alpha-TERPINEOL	0,82
81	38,42	COMPOUND Mw=152	0,05
82	39,32	beta-SELINENE	0,03
83	39,63	alpha-SELINENE	0,03
84	39,69	alpha-MUUROLENE	0,01
85	39,78	beta-BISABOLOL	0,02
86	40,01	cis-CARVYL ACETATE	0,02
87	40,23	exo-2-HYDROXYCINEOL ACETATE	0,02
88	40,77	TERPENIC ALCOHOL	0,01
89	41,52	delta-CADINENE	0,07
90	41,58	gamma-CADINENE	0,02

Disclaimer & Caution

Please refer to all relevant technical information specific to the product, prior to use. The information contained in this document is obtained from current and reliable sources, New Directions Aromatics Inc, provides the information contained herein, but makes no representation as to its comprehensiveness or accuracy. Individuals receiving this information must exercise their independent judgment in determining its appropriateness for a particular purpose. The user of the product is solely responsible for compliance with all laws and regulations applying to the use of the products, including intellectual property rights of third parties. As the ordinary or otherwise use(s) of this product is outside the control of New Directions Aromatics Inc., no representation or warranty, expressed or implied, is made as to the effect(s) of such use(s), (including damage or injury), or the results obtained. The liability of New Directions Aromatics Inc, is limited to the value of the goods and does not include any consequential loss. New Directions Aromatics Inc, shall not be liable for any errors or delays in the content, or for any actions taken in reliance thereon. New Directions Aromatics Inc, shall not be responsible for any damages resulting from use of or reliance upon this information. In the event of any dispute, the Customer hereby agrees that Jurisdiction is limited to the province of Ontario.

GCMS ANALYSIS (cont'd,)

PRODUCT NAME: SAGE ORGANIC ESSENTIAL OIL - 50040

Peak	RT (min)	Compound name	%
91	41,94	MYRCENYL ACETATE	0,02
92	43,26	MYRTENOL	0,03
93	43,40	CADINA-1,4-DIENE	0,02
94	44,11	SABINOL ISOMER	0,02
95	44,69	alpha-AMORPHENE	0,02
96	44,96	SESQUITERPENE Mw=202	0,02
97	45,54	CALAMENENE	0,01
98	45,72	trans-CARVEOL	0,03
99	46,30	GERANIOL	0,01
100	46,44	p-CYMENE-8-OL	0,07
101	47,05	E-GERANYL ACETONE	0,02
102	47,37	cis-CARVEOL	0,01
103	48,37	MYRCENOL	0,02
104	50,08	alpha-CALACORENE	0,02
105	50,39	COMPOUND Mw=150	0,09
106	51,19	AROMATIC COMPOUND	0,01
107	52,79	COMPOUND Mw=150	0,03
108	53,77	CARYOPHYLLENE EPOXIDE	0,10
109	54,30	PHENYLETHYLIC ESTER	0,01
110	54,75	SESQUITERPENIC OXIDE	0,02
111	54,91	COMPOUND Mw=166	0,02
112	55,49	ALIPHATIC ESTER	0,10
113	56,25	LEDOL	0,02
114	56,65	COMPOUND Mw=168	0,15
115	56,69	epoxy-6,7-HUMULENE	0,23
116	57,38	ELEMOL	0,05
117	57,56	SESQUITERPENOL Mw=222	0,02
118	57,90	COMPOUND Mw=168	0,23
119	59,09	VIRIDIFLOROL	2,18
120	61,60	SPATHULENOL	0,01

Disclaimer & Caution

Please refer to all relevant technical information specific to the product, prior to use. The information contained in this document is obtained from current and reliable sources, New Directions Aromatics Inc, provides the information contained herein, but makes no representation as to its comprehensiveness or accuracy. Individuals receiving this information must exercise their independent judgment in determining its appropriateness for a particular purpose. The user of the product is solely responsible for compliance with all laws and regulations applying to the use of the products, including intellectual property rights of third parties. As the ordinary or otherwise use(s) of this product is outside the control of New Directions Aromatics Inc., no representation or warranty, expressed or implied, is made as to the effect(s) of such use(s), (including damage or injury), or the results obtained. The liability of New Directions Aromatics Inc, is limited to the value of the goods and does not include any consequential loss. New Directions Aromatics Inc, shall not be liable for any errors or delays in the content, or for any actions taken in reliance thereon. New Directions Aromatics Inc, shall not be responsible for any damages resulting from use of or reliance upon this information. In the event of any dispute, the Customer hereby agrees that Jurisdiction is limited to the province of Ontario.

GCMS ANALYSIS (cont'd.)

PRODUCT NAME: SAGE ORGANIC ESSENTIAL OIL - 50040

Peak	RT (min)	Compound name	%
121	61,65	PENTADECANONE, TRIMETHYL-	0,02
122	62,72	EUGENOL	0,02
123	62,95	ISOTHYMOL	0,03
124	63,36	ISOPIMARA-8,15-DIENE	0,07
125	63,96	THYMOL	0,02
126	64,10	AROMATIC COMPOUND	0,04
127	64,12	4-VINYL-GUAIACOL	0,05
128	64,57	ISOCARVACROL	0,02
129	65,10	CARVACROL	0,09
130	66,08	beta-EUDESOL	0,01
131	66,84	DITERPENE Mw=272	0,01
132	67,40	COMPOUND Mw=270	0,03
133	68,59	SESQUITERPENIC EPOXIDE	0,16
134	69,08	ALIPHATIC ESTER	0,03
135	69,14	CARYOPHYLLA-2,7-DIEN-5-alpha-OL	0,04
136	70,95	SESQUITERPENIC EPOXIDE	0,08
137	71,22	DITERPENE Mw=272	0,04
138	71,75	AROMATIC COMPOUND	0,02
139	72,77	SESQUITERPENIC EPOXIDE	0,04
140	75,15	SESQUITERPENIC EPOXIDE	0,02
141	85,44	Epi-MANOOL	0,45
142	87,64	SESQUITERPENOL	0,02
		TOTAL	99,97

Disclaimer & Caution

Please refer to all relevant technical information specific to the product, prior to use. The information contained in this document is obtained from current and reliable sources. New Directions Aromatics Inc. provides the information contained herein, but makes no representation as to its comprehensiveness or accuracy. Individuals receiving this information must exercise their independent judgment in determining its appropriateness for a particular purpose. The user of the product is solely responsible for compliance with all laws and regulations applying to the use of the products, including intellectual property rights of third parties. As the ordinary or otherwise use(s) of this product is outside the control of New Directions Aromatics Inc., no representation or warranty, expressed or implied, is made as to the effect(s) of such use(s), (including damage or injury), or the results obtained. The liability of New Directions Aromatics Inc. is limited to the value of the goods and does not include any consequential loss. New Directions Aromatics Inc. shall not be liable for any errors or delays in the content, or for any actions taken in reliance thereon. New Directions Aromatics Inc. shall not be responsible for any damages resulting from use of or reliance upon this information. In the event of any dispute, the Customer hereby agrees that Jurisdiction is limited to the province of Ontario.