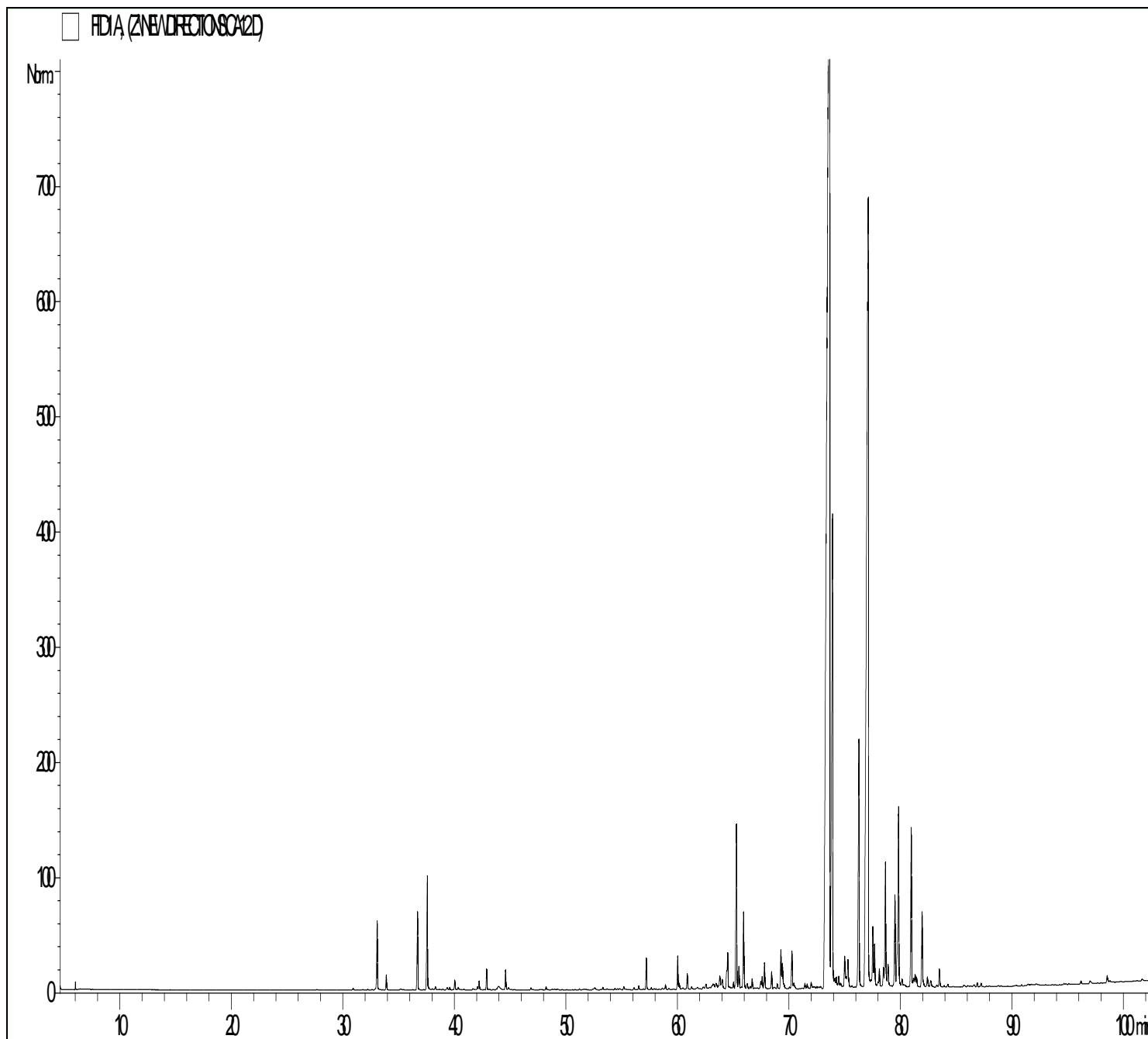


GCMS ANALYSIS

PRODUCT NAME: SANDALWOOD ESSENTIAL OIL (EAST INDIAN) - 11130

DATE: July 20, 2020



Due to volume turnover, this report is not lot specific, It is representative of the quality of this oil produced by the manufacturer of this product, Specific lots may vary slightly as is the case in natural products,

GCMS ANALYSIS (cont'd.)

PRODUCT NAME: SANDALWOOD ESSENTIAL OIL (EAST INDIAN) - 11130

Peak	RT (min)	Compound name	%
1	4,62	ACETONE	0,06
2	6,02	SANTENE	0,04
3	6,43	TRICYCLENE	0,01
4	30,92	alpha-cis-BERGAMOTENE	0,02
5	31,80	CEDRENE ISOMER	0,01
6	32,23	BERGAMOTENE ISOMER	0,01
7	32,97	alpha-CEDRENE	0,02
8	33,08	alpha-SANTALENE	0,71
9	33,90	alpha-trans-BERGAMOTENE	0,15
10	35,17	SESQUITERPENE	0,02
11	36,69	epi-beta-SANTALENE	0,80
12	37,57	beta-SANTALENE	1,21
13	37,66	FARNESENE ISOMER	0,03
14	37,77	SANTALENE ISOMER	0,01
15	38,02	SESQUITERPENE	0,02
16	38,29	FARNESENE ISOMER	0,04
17	38,63	SESQUITERPENE Mw=202	0,01
18	38,78	SESQUITERPENE	0,01
19	38,95	SANTALENE ISOMER	0,01
20	39,34	SESQUITERPENE	0,03
21	39,57	FARNESENE ISOMER	0,03
22	40,03	gamma-CURCUMENE	0,10
23	40,31	PHOTOSANTALOL ISOMER	0,03
24	40,85	AROMATIC COMPOUND	0,01
25	41,65	BERGAMOTENE ISOMER	0,02
26	42,06	PHOTOSANTALOL ISOMER	0,03
27	42,21	beta-BISABOLENE	0,10
28	42,89	beta-CURCUMENE	0,20
29	43,16	SESQUITERPENE	0,01
30	43,76	alpha-FARNESENE	0,01

Disclaimer & Caution:

Please refer to all relevant technical information specific to the product, prior to use. The information contained in this document is obtained from current and reliable sources. New Directions Aromatics Inc. provides the information contained herein, but makes no representation as to its comprehensiveness or accuracy. Individuals receiving this information must exercise their independent judgment in determining its appropriateness for a particular purpose. The user of the product is solely responsible for compliance with all laws and regulations applying to the use of the products, including intellectual property rights of third parties. As the ordinary or otherwise use(s) of this product is outside the control of New Directions Aromatics Inc., no representation or warranty, expressed or implied, is made as to the effect(s) of such use(s), (including damage or injury), or the results obtained. The liability of New Directions Aromatics Inc. is limited to the value of the goods and does not include any consequential loss. New Directions Aromatics Inc. shall not be liable for any errors or delays in the content, or for any actions taken in reliance thereon. New Directions Aromatics Inc. shall not be responsible for any damages resulting from use of or reliance upon this information. In the event of any dispute, the Customer hereby agrees that jurisdiction is limited to the province of Ontario.

GCMS ANALYSIS (cont'd.)

PRODUCT NAME: SANDALWOOD ESSENTIAL OIL (EAST INDIAN) - 11130

Peak	RT (min)	Compound name	%
31	43,97	BERGAMOTENE ISOMER	0,12
32	44,58	beta-SESQUIPELLANDRENE	0,04
33	44,84	alpha-CURCUMENE	0,21
34	46,86	COMPOUND Mw=147	0,02
35	48,21	PHOTOSANTALOL ISOMER	0,03
36	48,98	SESQUITERPENIC EPOXIDE	0,01
37	51,20	COMPOUND Mw=216	0,01
38	51,63	SESQUITERPENIC EPOXIDE	0,01
39	52,57	AROMATIC COMPOUND	0,05
40	53,30	DENDROSALIN	0,03
41	54,38	COMPOUND Mw=206	0,02
42	64,62	SESQUITERPENOL	0,01
43	64,81	SESQUITERPENONE Mw=218	0,02
44	55,18	SESQUITERPENIC EPOXIDE	0,05
45	56,10	AROMATIC COMPOUND	0,03
46	56,52	SESQUITERPENOL	0,04
47	57,20	alpha-PHOTOSANTALOL A	0,31
48	57,65	BERGAMOTOL ISOMER	0,02
49	57,91	SESQUITERPENOL	0,01
50	58,62	ALIPHATIC ESTER	0,02
51	58,92	NEROLIDOL	0,05
52	59,22	alpha-PHOTOSANTALOL B	0,33
53	60,16	PHOTOSANTALOL ISOMER	0,07
54	60,48	SESQUITERPENOL	0,03
55	60,88	SESQUITERPENIC EPOXIDE	0,18
56	61,26	SESQUISABINENE HYDRATE ISOMER	0,03
57	62,31	SANTENYL COMPOUND	0,04
58	62,55	SANTENIC SESQUITERPENOL	0,09
59	62,89	SESQUITERPENOL	0,04
60	63,09	SESQUITERPENOL	0,05

Disclaimer & Caution:

Please refer to all relevant technical information specific to the product, prior to use. The information contained in this document is obtained from current and reliable sources. New Directions Aromatics Inc. provides the information contained herein, but makes no representation as to its comprehensiveness or accuracy. Individuals receiving this information must exercise their independent judgment in determining its appropriateness for a particular purpose. The user of the product is solely responsible for compliance with all laws and regulations applying to the use of the products, including intellectual property rights of third parties. As the ordinary or otherwise use(s) of this product is outside the control of New Directions Aromatics Inc., no representation or warranty, expressed or implied, is made as to the effect(s) of such use(s), (including damage or injury), or the results obtained. The liability of New Directions Aromatics Inc. is limited to the value of the goods and does not include any consequential loss. New Directions Aromatics Inc. shall not be liable for any errors or delays in the content, or for any actions taken in reliance thereon. New Directions Aromatics Inc. shall not be responsible for any damages resulting from use of or reliance upon this information. In the event of any dispute, the Customer hereby agrees that Jurisdiction is limited to the province of Ontario.

GCMS ANALYSIS (cont'd.)

PRODUCT NAME: SANDALWOOD ESSENTIAL OIL (EAST INDIAN) - 11130

Peak	RT (min)	Compound name	%
61	63,20	ALIPHATIC ESTER	0,12
62	63,45	SESQUITERPENIC EPOXIDE	0,13
63	63,79	SESQUITERPENIC EPOXIDE	0,22
64	64,01	AROMATIC OXYGENED COMPOUND Mw=216	0,20
65	64,42	epi-beta-BISABOLOL	0,15
66	64,51	beta-BISABOLOL	0,43
67	64,69	SESQUITERPENOL	0,04
68	65,02	SANTALOL ISOMER	0,09
69	65,28	alpha-SANTALAL	2,00
70	65,51	SANTALOL ISOMER	0,27
71	65,82	BERGAMOTOL ISOMER	0,04
72	65,92	AROMATIC COMPOUND Mw=216	0,94
73	66,26	BERGAMOTOL ISOMER	0,10
74	66,52	SANTALOL ISOMER	0,04
75	66,69	COMPOUND Mw=216	0,12
76	67,46	epi-alpha-BISABOLOL	0,09
77	67,59	alpha-BISABOLOL	0,14
78	67,80	COMPOUND Mw=166	0,30
79	68,44	SANTALIC COMPOUND Mw=218	0,19
80	68,94	SESQUITERPENOL	0,05
81	69,27	SANTALOL ISOMER	0,44
82	69,41	SESQUITERPENOL Mw=222	0,34
83	70,26	SESQUIPELLANDROL ISOMER Mw=222	0,46
84	70,43	SANTALOL ISOMER	0,10
85	71,42	CURCUMENOL ISOMER	0,07
86	71,63	SESQUITERPENOL	0,06
87	71,98	BERGAMOTOL ISOMER	0,09
88	72,50	SESQUITERPENOL	0,03
89	73,65	Z-alpha-SANTALOL	43,29
90	73,90	Z-alpha-BERGAMOTOL	7,22

Disclaimer & Caution:

Please refer to all relevant technical information specific to the product, prior to use. The information contained in this document is obtained from current and reliable sources. New Directions Aromatics Inc. provides the information contained herein, but makes no representation as to its comprehensiveness or accuracy. Individuals receiving this information must exercise their independent judgment in determining its appropriateness for a particular purpose. The user of the product is solely responsible for compliance with all laws and regulations applying to the use of the products, including intellectual property rights of third parties. As the ordinary or otherwise use(s) of this product is outside the control of New Directions Aromatics Inc., no representation or warranty, expressed or implied, is made as to the effect(s) of such use(s), (including damage or injury), or the results obtained. The liability of New Directions Aromatics Inc. is limited to the value of the goods and does not include any consequential loss. New Directions Aromatics Inc. shall not be liable for any errors or delays in the content, or for any actions taken in reliance thereon. New Directions Aromatics Inc. shall not be responsible for any damages resulting from use of or reliance upon this information. In the event of any dispute, the Customer hereby agrees that Jurisdiction is limited to the province of Ontario.

GCMS ANALYSIS (cont'd.)

PRODUCT NAME: SANDALWOOD ESSENTIAL OIL (EAST INDIAN) - 11130

Peak	RT (min)	Compound name	%
91	74,11	SANTALOL ISOMER	0,14
92	74,25	SANTALOL ISOMER	0,15
93	74,46	BERGAMOTOL ISOMER	0,15
94	74,99	SANTALOL ISOMER	0,36
95	75,13	SANTALOL ISOMER	0,16
96	75,28	BERGAMOTOL ISOMER	0,45
97	76,27	Epi-beta-SANTALOL	3,30
98	77,12	Z-beta-SANTALOL	19,98
99	77,52	SANTALOL ISOMERE	0,85
100	77,67	SANTALOL ISOMER	0,60
101	78,10	BERGAMOTOL ISOMER	0,29
102	78,47	SANTALOL ISOMER	0,28
103	78,65	SANTALOL ISOMER	1,57
104	78,88	SANTALYL ACETATE ISOMER	0,33
105	79,51	Z-gamma-CURCUMENE-12-OL	1,09
106	79,82	LANCEOL	2,60
107	80,14	SESQUITERPENIC COMPOUND Mw=218	0,13
108	80,96	NUCIFEROL Mw=218	1,81
109	81,31	SESQUITERPENIC COMPOUND Mw=218	0,16
110	81,45	CURCUMENOL ISOMER	0,15
111	81,93	SESQUITERPENIC COMPOUND Mw=218	0,97
112	82,41	SESQUITERPENIC COMPOUND Mw=218	0,15
113	82,71	SESQUITERPENOL	0,13
114	83,48	SESQUITERPENIC COMPOUND Mw=218	0,23
115	84,24	SESQUITERPENIC EPOXIDE	0,04
116	86,88	SESQUITERPENOL	0,05
117	87,22	SESQUITERPENIC COMPOUND Mw=218	0,05
118	96,18	SANTALIC COMPOUND Mw=232	0,04
119	97,00	SESQUITERPENIC COMPOUND Mw=218	0,05
120	98,53	OXYGENED SESQUITERPENIC COMPOUND	0,13
121	101,67	OXYGENED SESQUITERPENIC COMPOUND	0,03
		TOTAL	99,91

Disclaimer & Caution:

Please refer to all relevant technical information specific to the product, prior to use. The information contained in this document is obtained from current and reliable sources. New Directions Aromatics Inc. provides the information contained herein, but makes no representation as to its comprehensiveness or accuracy. Individuals receiving this information must exercise their independent judgment in determining its appropriateness for a particular purpose. The user of the product is solely responsible for compliance with all laws and regulations applying to the use of the products, including intellectual property rights of third parties. As the ordinary or otherwise use(s) of this product is outside the control of New Directions Aromatics Inc., no representation or warranty, expressed or implied, is made as to the effect(s) of such use(s), (including damage or injury), or the results obtained. The liability of New Directions Aromatics Inc. is limited to the value of the goods and does not include any consequential loss. New Directions Aromatics Inc. shall not be liable for any errors or delays in the content, or for any actions taken in reliance thereon. New Directions Aromatics Inc. shall not be responsible for any damages resulting from use of or reliance upon this information. In the event of any dispute, the Customer hereby agrees that Jurisdiction is limited to the province of Ontario.