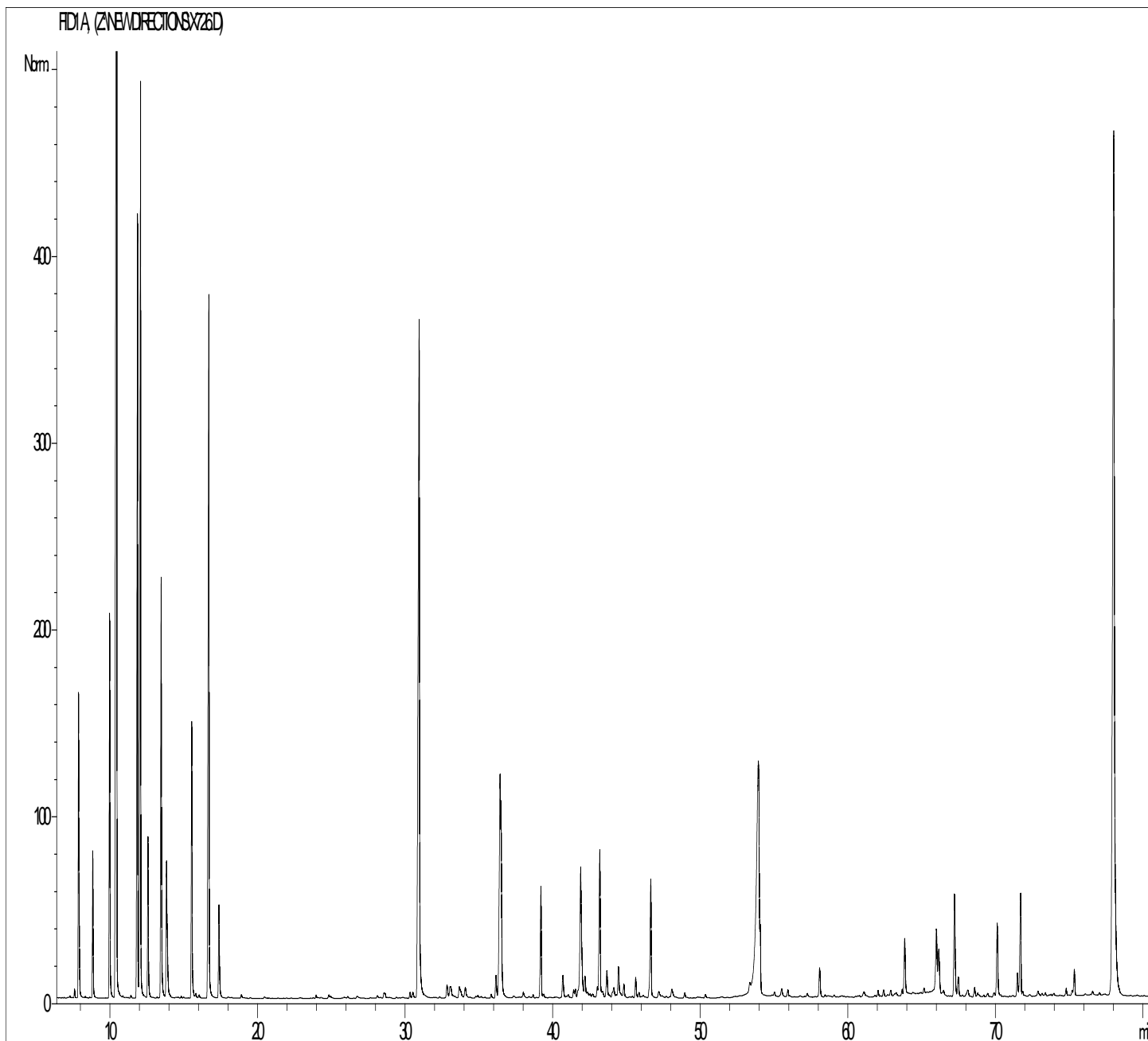


GCMS ANALYSIS

PRODUCT NAME: TANSY BLUE ESSENTIAL OIL - 11142

DATE: June 19, 2019



Due to volume turnover, this report is not lot specific. It is representative of the quality of this oil produced by the manufacturer of this product. Specific lots may vary slightly as is the case in natural products.

GCMS ANALYSIS (cont'd.)

PRODUCT NAME: TANSY BLUE ESSENTIAL OIL - 11142

Peak	RT (min)	Compound name	%
1	7,6	TRICYCLENE	0,05
2	7,8	alpha-PINENE	1,62
3	7,9	alpha-THUYENE	0,38
4	8,3	ETHYL 2-METHYLBUTYRATE	0,01
5	8,6	alpha-FENCHENE	0,01
6	8,8	CAMPHENE	0,90
7	9,9	beta-PINENE	2,53
8	10,4	SABINENE	15,45
9	15,6	PINADIENE	0,11
10	11,4	delta3-CARENE	0,02
11	11,8	beta-MYRCENE	5,22
12	12,1	alpha-PHELLANDRENE	6,91
13	12,6	alpha-TERPINENE	1,13
14	13,2	AMYL ISOBUTYRATE	0,01
15	13,5	LIMONENE	3,05
16	13,8	1,8-CINEOLE	1,01
17	13,9	beta-PHELLANDRENE	0,42
18	14,8	FURAN-2-PENTYL	0,02
19	15,9	ISOBUTYL 2-METHYLBUTYRATE	0,01
20	16,0	Cis-beta-OCIMENE	0,01
21	15,5	gamma-TERPINENE	2,00
22	15,6	MENTHATRIENE ISOMER	0,02
23	15,8	Trans-beta-OCIMENE	0,05
24	16,0	TERPINENE ISOMER	0,03
25	16,6	p-CYMENE	6,00
26	17,4	TERPINOLENE	0,79
27	18,0	OCTANAL	0,01
28	18,9	1,3,7-NONATRIENE-4,8-DIMETHYL	0,03
29	20,5	5-HEPTEN-2-ONE-6-METHYL	0,02
30	23,9	ALIPHATIC ESTER	0,05

Disclaimer & Caution:

Please refer to all relevant technical information specific to the product, prior to use. The information contained in this document is obtained from current and reliable sources. New Directions Aromatics Inc. provides the information contained herein, but makes no representation as to its comprehensiveness or accuracy. Individuals receiving this information must exercise their independent judgment in determining its appropriateness for a particular purpose. The user of the product is solely responsible for compliance with all laws and regulations applying to the use of the products, including intellectual property rights of third parties. As the ordinary or otherwise use(s) of this product is outside the control of New Directions Aromatics Inc., no representation or warranty, expressed or implied, is made as to the effect(s) of such use(s), (including damage or injury), or the results obtained. The liability of New Directions Aromatics Inc. is limited to the value of the goods and does not include any consequential loss. New Directions Aromatics Inc. shall not be liable for any errors or delays in the content, or for any actions taken in reliance thereon. New Directions Aromatics Inc. shall not be responsible for any damages resulting from use of or reliance upon this information. In the event of any dispute, the Customer hereby agrees that Jurisdiction is limited to the province of Ontario..

GCMS ANALYSIS (cont'd.)

PRODUCT NAME: TANSY BLUE ESSENTIAL OIL - 11142

Peak	RT (min)	Compound name	%
31	24,3	ALIPHATIC ESTER	0,02
32	24,8	PERILLENE	0,06
33	25,8	DIMETHYLSTYRENE ISOMER	0,02
34	26,1	ALIPHATIC ESTER	0,02
35	26,7	alpha,p-DIMETHYLSTYRENE	0,04
36	26,8	LINALOOL Cis-OXIDE	0,01
37	28,1	alpha-CUBEBENE	0,03
38	28,5	Trans-THUYANOL	0,04
39	28,6	LINALOOL Trans-OXIDE	0,05
40	29,4	delta-ELEMENE	0,02
41	29,6	HEXENYLIC ESTER	0,01
42	29,9	alpha-CAMPHOLENAL	0,04
43	30,5	alpha-COPAENE	0,07
44	30,5	ALIPHATIC ESTER	0,05
45	30,9	CAMPHOR	8,46
46	32,3	alpha-GURJUNENE	0,01
47	32,8	Cis-p-MENTH-3-EN-7-AL	0,16
48	33,0	Trans-p-MENTH-3-EN-7-AL	0,15
49	33,1	BERGAMOTENE ISOMERE	0,05
50	33,2	beta1-CUBEBENE	0,05
51	33,6	1-METHYL-4-ACETYLCYCLOHEX-1-ENE	0,21
52	34,0	1-OCTANOL	0,06
53	34,1	PINOCARVONE	0,02
54	34,2	Trans-p-MENTH-2-EN-1-OL	0,08
55	34,4	BORNYLE FORMATE	0,01
56	34,7	alpha-cis-BERGAMOTENE	0,02
57	34,9	BORNYL ACETATE	0,04
58	35,1	epsilon-CADINENE	0,03
59	35,4	ELEMENE ISOMER	0,02
60	35,8	alpha-trans-BERGAMOTENE	0,03

Disclaimer & Caution:

Please refer to all relevant technical information specific to the product, prior to use. The information contained in this document is obtained from current and reliable sources. New Directions Aromatics Inc. provides the information contained herein, but makes no representation as to its comprehensiveness or accuracy. Individuals receiving this information must exercise their independent judgment in determining its appropriateness for a particular purpose. The user of the product is solely responsible for compliance with all laws and regulations applying to the use of the products, including intellectual property rights of third parties. As the ordinary or otherwise use(s) of this product is outside the control of New Directions Aromatics Inc., no representation or warranty, expressed or implied, is made as to the effect(s) of such use(s), (including damage or injury), or the results obtained. The liability of New Directions Aromatics Inc. is limited to the value of the goods and does not include any consequential loss. New Directions Aromatics Inc. shall not be liable for any errors or delays in the content, or for any actions taken in reliance thereon. New Directions Aromatics Inc. shall not be responsible for any damages resulting from use of or reliance upon this information. In the event of any dispute, the Customer hereby agrees that Jurisdiction is limited to the province of Ontario..

GCMS ANALYSIS (cont'd.)

PRODUCT NAME: TANSY BLUE ESSENTIAL OIL - 11142

Peak	RT (min)	Compound name	%
61	36,2	beta-ELEMENE	0,22
62	36,4	beta-CARYOPHYLLENE	2,22
63	36,5	TERPINENE-4-OL	1,72
64	37,3	AROMADENDRENE	0,04
65	38,0	MYRTENAL	0,09
66	38,4	SABINAKETONE	0,03
67	38,6	Cis-p-MENTH-2-EN-1-OL	0,04
68	39,2	FARNESENE ISOMER	0,97
69	39,4	PULEGONE	0,05
70	40,2	ZONARENE	0,05
71	40,6	alpha-HUMULENE	0,27
72	41,0	CARVOTANACETONE + E-beta-FARNESENE	0,07
73	41,4	4,5-di-épi-ARISTOLOCHENE	0,08
74	41,5	Z-beta-FARNESENE	0,08
75	41,8	gamma-MUUROLENE	0,08
76	41,9	BORNEOL	1,86
77	42,2	alpha-TERPINEOL	0,25
78	42,3	LEDENE	0,08
79	43,0	ALIPHATIC ALCOHOL	0,10
80	43,1	GERMACRENE D	1,55
81	43,3	CADINENE ISOMER	0,09
82	43,6	beta-SELINENE	0,31
83	43,8	PIPERITONE	0,04
84	44,1	alpha-SELINENE	0,09
85	44,2	alpha-MUUROLENE	0,07
86	44,4	SESQUITERPENE	0,03
87	44,4	BICYCLOGERMACRENE	0,31
88	44,8	beta-CURCUMENE	0,16
89	45,6	delta-CADINENE	0,20
90	45,8	gamma-CADINENE	0,05

Disclaimer & Caution:

Please refer to all relevant technical information specific to the product, prior to use. The information contained in this document is obtained from current and reliable sources. New Directions Aromatics Inc. provides the information contained herein, but makes no representation as to its comprehensiveness or accuracy. Individuals receiving this information must exercise their independent judgment in determining its appropriateness for a particular purpose. The user of the product is solely responsible for compliance with all laws and regulations applying to the use of the products, including intellectual property rights of third parties. As the ordinary or otherwise use(s) of this product is outside the control of New Directions Aromatics Inc., no representation or warranty, expressed or implied, is made as to the effect(s) of such use(s), (including damage or injury), or the results obtained. The liability of New Directions Aromatics Inc. is limited to the value of the goods and does not include any consequential loss. New Directions Aromatics Inc. shall not be liable for any errors or delays in the content, or for any actions taken in reliance thereon. New Directions Aromatics Inc. shall not be responsible for any damages resulting from use of or reliance upon this information. In the event of any dispute, the Customer hereby agrees that Jurisdiction is limited to the province of Ontario..

GCMS ANALYSIS (cont'd.)

PRODUCT NAME: TANSY BLUE ESSENTIAL OIL - 11142

Peak	RT (min)	Compound name	%
91	46,5	CUMINAL	0,07
92	46,6	beta-SESQUIPELLANDRENE	1,07
93	46,7	alpha-CURCUMENE	0,03
94	47,2	MENTHADIENAL ISOMER	0,10
95	47,4	CADINA-1,4-DIENE	0,04
96	48,1	SABINOL ISOMER	0,15
97	48,9	beta-DAMASCENONE	0,06
98	50,3	p-CYMENE-8-OL	0,03
99	51,5	PHENYLMETHYLE 2-METHYLBUTYRATE	0,02
100	53,3	DIHYDROCHAMAZULENE ISOMER	0,36
101	53,9	5,6-DIHYDROCHAMAZULENE	5,92
102	54,1	alpha-CALACORENE	0,53
103	55,0	DIHYDROCHAMAZULENE ISOMER	0,04
104	55,5	DIHYDROCHAMAZULENE ISOMER	0,11
105	55,9	DITERPENE Mw=272	0,08
106	57,2	DIHYDROCHAMAZULENE ISOMER	0,05
107	58,1	CARYOPHYLLENE OXIDE	0,31
108	61,1	SESQUITERPENOL	0,11
109	62,0	SESQUITERPENOL	0,06
110	62,4	SESQUITERPENIC EPOXIDE	0,07
111	62,9	AROMATIC COMPOUND	0,08
112	63,3	METHYL ANISATE	0,08
113	63,6	CUMINOL	0,07
114	63,8	DIHYDROCHAMAZULENE ISOMER	0,56
115	64,4	COMPOUND Mw=186	0,03
116	65,1	SPATHULENOL	0,05
117	65,9	DIHYDROCHAMAZULENE ISOMER	1,83
118	66,2	PENTADECANONE TRIMETHYL	0,57
119	66,5	T-CADINOL	0,04
120	67,2	AGAROSPIROL	0,22

Disclaimer & Caution:

Please refer to all relevant technical information specific to the product, prior to use. The information contained in this document is obtained from current and reliable sources. New Directions Aromatics Inc. provides the information contained herein, but makes no representation as to its comprehensiveness or accuracy. Individuals receiving this information must exercise their independent judgment in determining its appropriateness for a particular purpose. The user of the product is solely responsible for compliance with all laws and regulations applying to the use of the products, including intellectual property rights of third parties. As the ordinary or otherwise use(s) of this product is outside the control of New Directions Aromatics Inc., no representation or warranty, expressed or implied, is made as to the effect(s) of such use(s), (including damage or injury), or the results obtained. The liability of New Directions Aromatics Inc. is limited to the value of the goods and does not include any consequential loss. New Directions Aromatics Inc. shall not be liable for any errors or delays in the content, or for any actions taken in reliance thereon. New Directions Aromatics Inc. shall not be responsible for any damages resulting from use of or reliance upon this information. In the event of any dispute, the Customer hereby agrees that Jurisdiction is limited to the province of Ontario..

GCMS ANALYSIS (cont'd.)

PRODUCT NAME: TANSY BLUE ESSENTIAL OIL - 11142

Peak	RT (min)	Compound name	%
121	67,5	THYMOL	1,10
122	68,1	alpha-MUUROLOL	0,13
123	68,6	CARVACROL	0,10
124	69,5	SESQUITERPENOL	0,04
125	69,9	alpha-EUDESOL	0,05
126	70,1	beta-EUDESOL	0,74
127	70,2	alpha-CADINOL	0,04
128	71,5	AROMATIC COMPOUND Mw=286 ISOMER	0,23
129	71,7	AROMATIC COMPOUND Mw=286 ISOMER	1,00
130	72,8	SESQUITERPENIC EPOXIDE	0,08
131	73,3	SESQUITERPENIC EPOXIDE	0,04
132	74,7	AROMATIC COMPOUND	0,08
133	75,2	SESQUITERPENOL	0,05
134	75,3	GERANYL-p-CYMENE ISOMER	0,26
135	78,0	CHAMAZULEN	14,20
		TOTAL	99,83

Disclaimer & Caution:

Please refer to all relevant technical information specific to the product, prior to use. The information contained in this document is obtained from current and reliable sources. New Directions Aromatics Inc. provides the information contained herein, but makes no representation as to its comprehensiveness or accuracy. Individuals receiving this information must exercise their independent judgment in determining its appropriateness for a particular purpose. The user of the product is solely responsible for compliance with all laws and regulations applying to the use of the products, including intellectual property rights of third parties. As the ordinary or otherwise use(s) of this product is outside the control of New Directions Aromatics Inc., no representation or warranty, expressed or implied, is made as to the effect(s) of such use(s), (including damage or injury), or the results obtained. The liability of New Directions Aromatics Inc. is limited to the value of the goods and does not include any consequential loss. New Directions Aromatics Inc. shall not be liable for any errors or delays in the content, or for any actions taken in reliance thereon. New Directions Aromatics Inc. shall not be responsible for any damages resulting from use of or reliance upon this information. In the event of any dispute, the Customer hereby agrees that Jurisdiction is limited to the province of Ontario..