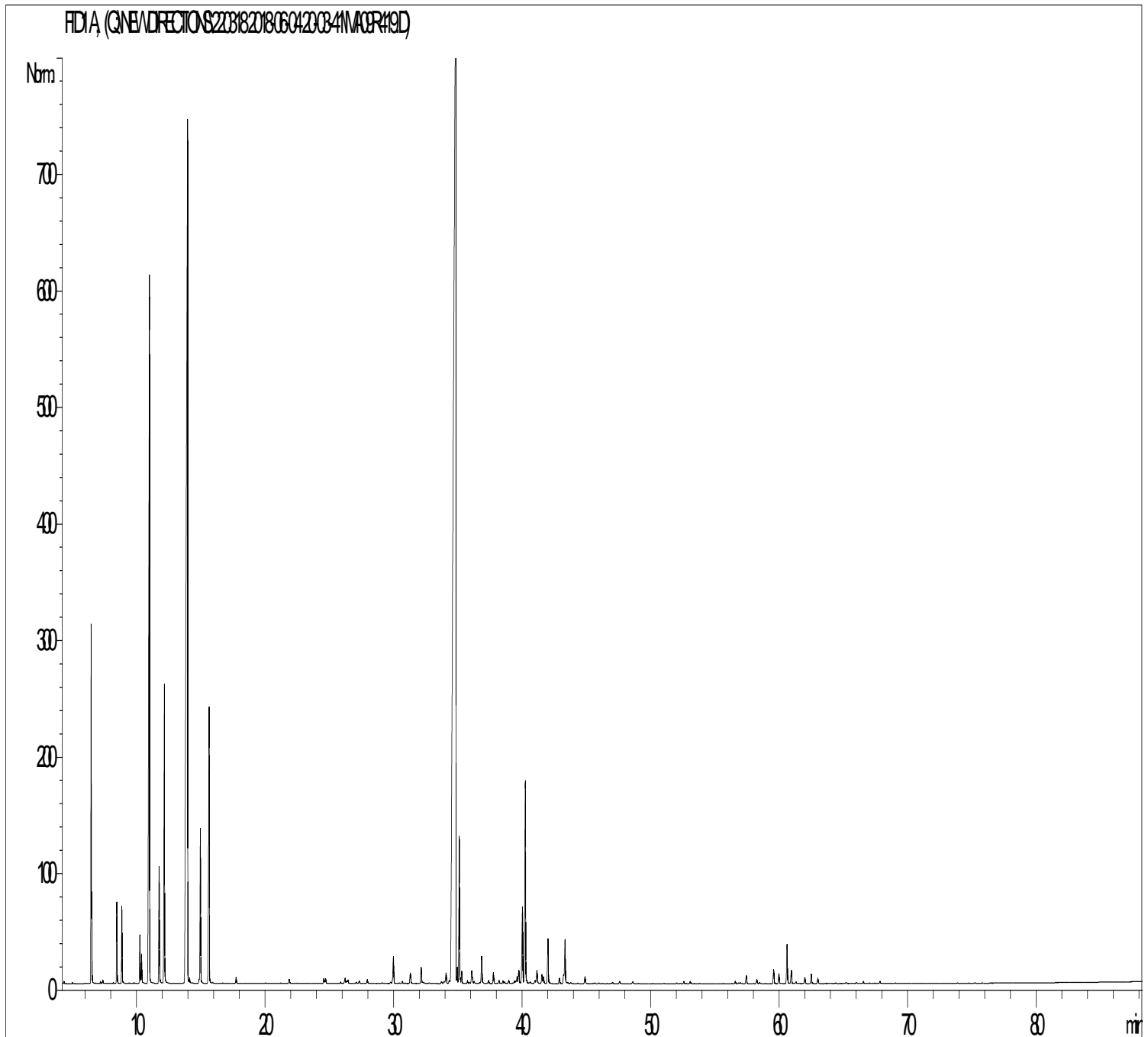




GCMS ANALYSIS

PRODUCT NAME: TEA TREE ORGANIC ESSENTIAL OIL (CHINA) - 50062

DATE: June 13, 2018



Due to volume turnover, this report is not lot specific. It is representative of the quality of this oil produced by the manufacturer of this product. Specific lots may vary slightly as is the case in natural products.



GCMS ANALYSIS (cont'd.)

PRODUCT NAME: TEA TREE ORGANIC ESSENTIAL OIL (CHINA) - 50062

Peak	RT (min)	Compound name	%
1	4,3	OCTANE	0,01
2	4,4	ACETONE	0,02
3	5,0	2-METHYL BUTANAL	0,01
4	6,4	alpha-PINENE	2,48
5	6,5	alpha-THUYENE	0,61
6	7,1	alpha-FENCHENE	0,02
7	7,4	CAMPHENE	0,04
8	8,4	beta-PINENE	0,73
9	8,8	SABINENE	0,69
10	9,4	MENTHENE ISOMER	0,01
11	9,8	delta3-CARENE	0,01
12	10,2	beta-MYRCENE	0,47
13	10,4	alpha-PHELLANDRENE	0,32
14	10,5	psi-LIMONENE	0,01
15	11,0	alpha-TERPINENE	9,97
16	11,8	LIMONENE	1,28
17	12,1	1,8-CINEOLE	3,31
18	13,9	gamma-TERPINENE	20,32
19	14,1	Trans-beta-OCIMENE	0,06
20	14,8	m-CYMENE	0,06
21	14,9	p-CYMENE	1,57
22	15,6	TERPINOLENE	3,46
23	17,7	PINOL	0,08
24	20,0	ISODIHYDROLAVANDULAL	0,01
25	21,8	FENCHONE	0,06
26	24,5	alpha-p-DIMETHYLSTYRENE	0,08
27	24,7	LINALOOL cis-OXIDE	0,07
28	25,8	alpha-CUBEBENE	0,02
29	26,2	Trans-THUYANOL	0,09
30	26,3	LINALOOL trans-OXIDE	0,04

Disclaimer & Caution

Please refer to all relevant technical information specific to the product, prior to use. The information contained in this document is obtained from current and reliable sources. New Directions Aromatics Inc. provides the information contained herein, but makes no representation as to its comprehensiveness or accuracy. Individuals receiving this information must exercise their independent judgment in determining its appropriateness for a particular purpose. The user of the product is solely responsible for compliance with all laws and regulations applying to the use of the products, including intellectual property rights of third parties. As the ordinary or otherwise use(s) of this product is outside the control of New Directions Aromatics Inc., no representation or warranty, expressed or implied, is made as to the effect(s) of such use(s), (including damage or injury), or the results obtained. The liability of New Directions Aromatics Inc. is limited to the value of the goods and does not include any consequential loss. New Directions Aromatics Inc. shall not be liable for any errors or delays in the content, or for any actions taken in reliance thereon. New Directions Aromatics Inc. shall not be responsible for any damages resulting from use of or reliance upon this information. In the event of any dispute, the Customer hereby agrees that Jurisdiction is limited to the province of Ontario.

GCMS ANALYSIS (cont'd.)
PRODUCT NAME: TEA TREE ORGANIC ESSENTIAL OIL (CHINA) - 50062

Peak	RT (min)	Compound name	%
31	26,4	SESQUITERPENE	0,05
32	27,0	BICYCLOELEMENE	0,02
33	27,3	ISOLEDENE	0,04
34	27,9	alpha-COPAENE	0,06
35	29,1	DILL ETHER	0,02
36	29,8	SESQUITERPENE	0,02
37	29,9	alpha-GURJUNENE	0,40
38	30,4	BENZENE METHYLETHENYL METHYL ETHYL	0,01
39	30,6	SESQUITERPENE	0,03
40	30,9	SESQUITERPENE	0,01
41	31,2	Cis-THUYANOL	0,11
42	31,3	LINALOOL	0,06
43	32,1	Trans-p-MENTH-2-EN-1-OL	0,22
44	32,2	SESQUITERPENE	0,01
45	32,3	SESQUITERPENE	0,02
46	32,7	SESQUITERPENE	0,01
47	33,7	CALARENE ISOMER	0,03
48	33,9	beta-ELEMENE	0,03
49	34,0	beta-CARYOPHYLLENE	0,17
50	34,3	SESQUITERPENE	0,05
51	34,8	TERPINENE-4-OL	41,13
52	34,9	SESQUITERPENE	0,16
53	35,0	AROMADENDRENE	1,46
54	35,1	SESQUITERPENE	0,07
55	35,3	SESQUITERPENE	0,13
56	35,7	MYRTENAL	0,03
57	35,9	GURJUNENE ISOMER	0,02
58	36,0	Cis-p-MENTH-2-EN-1-OL	0,16
59	36,1	CADINA-3,5-DIENE	0,07
60	36,2	SESQUITERPENE	0,03

Disclaimer & Caution

Please refer to all relevant technical information specific to the product, prior to use. The information contained in this document is obtained from current and reliable sources. New Directions Aromatics Inc. provides the information contained herein, but makes no representation as to its comprehensiveness or accuracy. Individuals receiving this information must exercise their independent judgment in determining its appropriateness for a particular purpose. The user of the product is solely responsible for compliance with all laws and regulations applying to the use of the products, including intellectual property rights of third parties. As the ordinary or otherwise use(s) of this product is outside the control of New Directions Aromatics Inc., no representation or warranty, expressed or implied, is made as to the effect(s) of such use(s), (including damage or injury), or the results obtained. The liability of New Directions Aromatics Inc. is limited to the value of the goods and does not include any consequential loss. New Directions Aromatics Inc. shall not be liable for any errors or delays in the content, or for any actions taken in reliance thereon. New Directions Aromatics Inc. shall not be responsible for any damages resulting from use of or reliance upon this information. In the event of any dispute, the Customer hereby agrees that Jurisdiction is limited to the province of Ontario.

GCMS ANALYSIS (cont'd.)

PRODUCT NAME: TEA TREE ORGANIC ESSENTIAL OIL (CHINA) - 50062

Peak	RT (min)	Compound name	%
61	36,8	ALLO-AROMADENDRENE	0,39
62	37,3	Trans-PINOCARVEOL	0,05
63	37,7	ZONARENE	0,16
64	38,1	alpha-HUMULENE	0,05
65	38,5	delta-TERPINEOL	0,04
66	38,6	gamma-SELINENE	0,03
67	38,9	Cis-PIPERITOL	0,06
68	39,4	NERAL	0,05
69	39,5	gamma-MUUROLENE	0,03
70	39,6	SESQUITERPENE	0,11
71	39,7	CALARENE	0,20
72	40,0	LEDENE	1,14
73	40,2	alpha-TERPINEOL	2,87
74	40,3	gamma-TERPINEOL	0,04
75	40,6	SESQUITERPENE	0,04
76	40,9	GERMACRENE D	0,05
77	41,1	beta-SELINENE	0,21
78	41,5	alpha-SELINENE	0,13
79	41,6	alpha-MUUROLENE	0,10
80	42,0	BICYCLOGERMACRENE	0,62
81	42,1	SESQUITERPENE	0,02
82	42,8	trans-PIPERITOL	0,08
83	43,1	delta-CADINENE	0,63
84	43,3	gamma-CADINENE	0,10
85	43,5	GERANYL ACETATE	0,02
86	43,7	SESQUITERPENE Mw=202	0,02
87	44,3	SESQUITERPENE Mw=202	0,01
88	44,8	CADINA-1,4-DIENE	0,10
89	45,6	SESQUITERPENE Mw=202	0,02
90	45,9	NEROL	0,01

Disclaimer & Caution

Please refer to all relevant technical information specific to the product, prior to use. The information contained in this document is obtained from current and reliable sources. New Directions Aromatics Inc. provides the information contained herein, but makes no representation as to its comprehensiveness or accuracy. Individuals receiving this information must exercise their independent judgment in determining its appropriateness for a particular purpose. The user of the product is solely responsible for compliance with all laws and regulations applying to the use of the products, including intellectual property rights of third parties. As the ordinary or otherwise use(s) of this product is outside the control of New Directions Aromatics Inc., no representation or warranty, expressed or implied, is made as to the effect(s) of such use(s), (including damage or injury), or the results obtained. The liability of New Directions Aromatics Inc. is limited to the value of the goods and does not include any consequential loss. New Directions Aromatics Inc. shall not be liable for any errors or delays in the content, or for any actions taken in reliance thereon. New Directions Aromatics Inc. shall not be responsible for any damages resulting from use of or reliance upon this information. In the event of any dispute, the Customer hereby agrees that Jurisdiction is limited to the province of Ontario.

GCMS ANALYSIS (cont'd.)
PRODUCT NAME: TEA TREE ORGANIC ESSENTIAL OIL (CHINA) - 50062

Peak	RT (min)	Compound name	%
91	47,0	SESQUITERPENE	0,02
92	47,5	CALAMENENE	0,04
93	48,5	p-CYMENE-8-OL	0,04
94	48,6	GERANIOL	0,02
95	51,0	EPOXYDE SESQUITERPENIQUE	0,01
96	52,0	alpha-CALACORENE	0,01
97	52,2	COMPOSE Mw=220	0,01
98	52,5	GERANYL METHYLBUTYRATE	0,03
99	53,0	PALUSTROL	0,04
100	53,8	EPOXYDE SESQUITERPENIQUE	0,01
101	56,5	SESQUITERPENOL	0,04
102	56,8	SESQUITERPENOL	0,01
103	56,9	METHYLEUGENOL	0,02
104	57,4	Epi-GLOBULOL	0,13
105	58,2	LEDOL	0,06
106	58,5	SESQUITERPENOL	0,02
107	59,5	GLEENOL	0,20
108	59,9	CUBENOL	0,13
109	60,6	GLOBULOL	0,56
110	60,9	SESQUITERPENOL	0,01
111	61,0	VIRIDIFLOROL	0,18
112	61,3	Cis-1,4-DIHYDROXY-p-MENTH-2-ENE	0,03
113	61,9	10-epi-gamma-EUDESMOL	0,09
114	62,5	ROSIFOLIOL	0,14
115	63,0	SPATHULENOL	0,07
116	64,4	Trans-1,4-DIHYDROXY-p-MENTH-2-ENE	0,01
117	65,1	ACETOXYKETONE COMPOUND	0,02
118	66,0	alpha-MUUROLOL	0,02
119	66,5	delta-CADINOL	0,03
120	66,8	SESQUITERPENOL	0,01

Disclaimer & Caution

Please refer to all relevant technical information specific to the product, prior to use. The information contained in this document is obtained from current and reliable sources. New Directions Aromatics Inc. provides the information contained herein, but makes no representation as to its comprehensiveness or accuracy. Individuals receiving this information must exercise their independent judgment in determining its appropriateness for a particular purpose. The user of the product is solely responsible for compliance with all laws and regulations applying to the use of the products, including intellectual property rights of third parties. As the ordinary or otherwise use(s) of this product is outside the control of New Directions Aromatics Inc., no representation or warranty, expressed or implied, is made as to the effect(s) of such use(s), (including damage or injury), or the results obtained. The liability of New Directions Aromatics Inc. is limited to the value of the goods and does not include any consequential loss. New Directions Aromatics Inc. shall not be liable for any errors or delays in the content, or for any actions taken in reliance thereon. New Directions Aromatics Inc. shall not be responsible for any damages resulting from use of or reliance upon this information. In the event of any dispute, the Customer hereby agrees that Jurisdiction is limited to the province of Ontario.

GCMS ANALYSIS (cont'd.)

PRODUCT NAME: TEA TREE ORGANIC ESSENTIAL OIL (CHINA) - 50062

Peak	RT (min)	Compound name	%
121	67,0	CARVACROL	0,01
122	67,4	SESQUITERPENOL	0,01
123	67,8	beta-NOOTKATOL	0,03
124	69,0	EUDESMA-7-EN-4-OL	0,01
		TOTAL	99,99

Disclaimer & Caution

Please refer to all relevant technical information specific to the product, prior to use. The information contained in this document is obtained from current and reliable sources. New Directions Aromatics Inc. provides the information contained herein, but makes no representation as to its comprehensiveness or accuracy. Individuals receiving this information must exercise their independent judgment in determining its appropriateness for a particular purpose. The user of the product is solely responsible for compliance with all laws and regulations applying to the use of the products, including intellectual property rights of third parties. As the ordinary or otherwise use(s) of this product is outside the control of New Directions Aromatics Inc., no representation or warranty, expressed or implied, is made as to the effect(s) of such use(s), (including damage or injury), or the results obtained. The liability of New Directions Aromatics Inc. is limited to the value of the goods and does not include any consequential loss. New Directions Aromatics Inc. shall not be liable for any errors or delays in the content, or for any actions taken in reliance thereon. New Directions Aromatics Inc. shall not be responsible for any damages resulting from use of or reliance upon this information. In the event of any dispute, the Customer hereby agrees that Jurisdiction is limited to the province of Ontario.