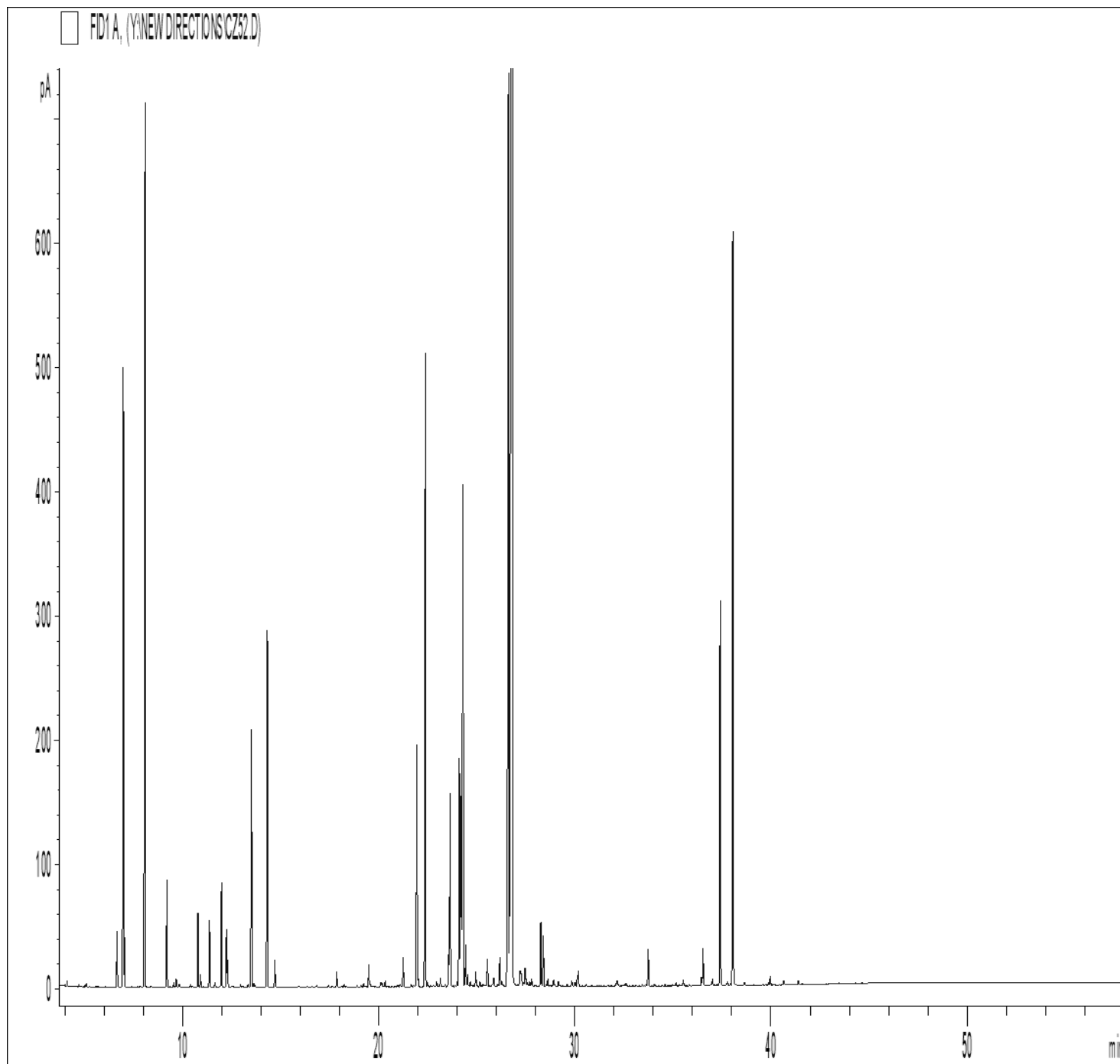


GCMS ANALYSIS

PRODUCT NAME: THYME ORGANIC ESSENTIAL OIL – 50023

DATE: October 23, 2020



Due to volume turnover, this report is not lot specific, It is representative of the quality of this oil produced by the manufacturer of this product, Specific lots may vary slightly as is the case in natural products,

GCMS ANALYSIS (cont'd,)

PRODUCT NAME: THYME ORGANIC ESSENTIAL OIL – 50023

Peak	RT (min)	Compound	%
1	4,12	ACETONE	0,03
2	5,04	BUTANAL, 2-METHYL-	0,01
3	5,09	ISOVALERALDEHYDE	0,02
4	6,66	TRICYCLENE	0,41
5	6,98	alpha-PINENE	4,83
6	7,04	alpha-THUYENE	0,31
7	8,09	CAMPHENE	8,30
8	9,20	beta-PINENE	0,85
9	9,55	SABINENE	0,03
10	9,68	PINADIENE	0,06
11	9,83	THUYA-2,4-DIENE	0,03
12	10,41	delta3-CARENE	0,02
13	10,78	beta-MYRCENE	0,59
14	10,91	alpha-PHELLANDRENE	0,09
15	11,37	alpha-TERPINENE	0,53
16	11,65	1,8-CINEOLE, 2,3-DEHYDRO-	0,03
17	11,99	LIMONENE	0,85
18	12,24	1,8-CINEOLE	0,49
19	12,30	beta-PHELLANDRENE	0,21
20	12,52	1,3,8-p-MENTHATRIENE	0,01
21	12,96	COMPOUND Mw=152	0,02
22	13,34	trans-ARBUSCULON	0,02
23	13,51	gamma-TERPINENE	2,21
24	13,63	trans-beta-OCIMENE	0,03
25	13,70	3-OCTANONE	0,01
26	14,32	p-CYMENE	3,19
27	14,71	TERPINOLENE	0,22
28	15,92	PINOL	0,01
29	16,83	COMPOUND Mw=152	0,01
30	17,44	COMPOUND Mw=152	0,01

Disclaimer & Caution

Please refer to all relevant technical information specific to the product, prior to use, The information contained in this document is obtained from current and reliable sources, New Directions Aromatics Inc, provides the information contained herein, but makes no representation as to its comprehensiveness or accuracy, Individuals receiving this information must exercise their independent judgment in determining its appropriateness for a particular purpose, The user of the product is solely responsible for compliance with all laws and regulations applying to the use of the products, including intellectual property rights of third parties, As the ordinary or otherwise use(s) of this product is outside the control of New Directions Aromatics Inc., no representation or warranty, expressed or implied, is made as to the effect(s) of such use(s), (including damage or injury), or the results obtained, The liability of New Directions Aromatics Inc, is limited to the value of the goods and does not include any consequential loss, New Directions Aromatics Inc, shall not be liable for any errors or delays in the content, or for any actions taken in reliance thereon, New Directions Aromatics Inc, shall not be responsible for any damages resulting from use of or reliance upon this information, In the event of any dispute, the Customer hereby agrees that Jurisdiction is limited to the province of Ontario,

GCMS ANALYSIS (cont'd,)

PRODUCT NAME: THYME ORGANIC ESSENTIAL OIL – 50023

Peak	RT (min)	Compound	%
31	17,86	3-OCTANOL	0,11
32	18,23	NONANAL	0,02
33	19,10	alpha-THUYONE	0,01
34	19,23	MENTHATRIENIC COMPOUND	0,03
35	19,49	alpha-p-DIMETHYLSTYRENE	0,10
36	19,50	LINALOOL cis-OXIDE	0,09
37	19,56	1-OCTEN-3-OL	0,03
38	19,67	COSMENE	0,01
39	19,82	CAMPHENILONE	0,01
40	20,10	trans-THUYANOL	0,03
41	20,16	NERYL OXIDE	0,04
42	20,33	alpha-CUBEBENE	0,05
43	20,68	SESQUITERPENE	0,01
44	20,97	alpha-CAMPHOLENAL	0,02
45	21,08	YLANGENE	0,03
46	21,25	alpha-COPAENE	0,28
47	21,66	COMPOUND Mw=152	0,02
48	21,95	CAMPHOR	2,26
49	22,01	beta-BOURBONENE	0,05
50	22,05	CAMPHOLENIC ALCOHOL	0,02
51	22,35	alpha-GURJUNENE	0,06
52	22,39	LINALOOL	5,98
53	22,50	cis-THUYANOL	0,04
54	22,78	1-OCTANOL	0,02
55	22,95	trans-p-MENTH-2-EN-1-OL	0,04
56	23,14	4-CARANONE	0,07
57	23,39	PINOCARVONE	0,02
58	23,56	BORNYL FORMATE	0,29
59	23,64	BORNYL ACETATE	1,75
60	23,89	METHYL THYMOL ETHER	0,02

Disclaimer & Caution

Please refer to all relevant technical information specific to the product, prior to use, The information contained in this document is obtained from current and reliable sources, New Directions Aromatics Inc, provides the information contained herein, but makes no representation as to its comprehensiveness or accuracy, Individuals receiving this information must exercise their independent judgment in determining its appropriateness for a particular purpose, The user of the product is solely responsible for compliance with all laws and regulations applying to the use of the products, including intellectual property rights of third parties, As the ordinary or otherwise use(s) of this product is outside the control of New Directions Aromatics Inc., no representation or warranty, expressed or implied, is made as to the effect(s) of such use(s), (including damage or injury), or the results obtained, The liability of New Directions Aromatics Inc, is limited to the value of the goods and does not include any consequential loss, New Directions Aromatics Inc, shall not be liable for any errors or delays in the content, or for any actions taken in reliance thereon, New Directions Aromatics Inc, shall not be responsible for any damages resulting from use of or reliance upon this information, In the event of any dispute, the Customer hereby agrees that Jurisdiction is limited to the province of Ontario,

GCMS ANALYSIS (cont'd,)

PRODUCT NAME: THYME ORGANIC ESSENTIAL OIL – 50023

Peak	RT (min)	Compound	%
61	24,00	CAMPHENE HYDRATE	0,04
62	24,11	METHYL CARVACROL ETHER	2,15
63	24,19	TERPINENE-4-OL	1,62
64	24,30	beta-CARYOPHYLLENE	5,79
65	24,38	TERPENIC ESTER	0,01
66	24,44	HOTRIENOL	0,37
67	24,53	cis-DIHYDROCARVONE	0,11
68	24,60	SESQUITERPENE	0,01
69	24,67	AROMADENDRENE	0,04
70	24,75	cis-p-MENTH-2-EN-1-OL	0,02
71	24,86	COPACAMPHENE	0,02
72	24,95	trans-DIHYDROCARVONE	0,14
73	25,02	COMPOUND Mw=166	0,01
74	25,15	CADINA-3,5-DIENE	0,05
75	25,24	GERMACRENE A	0,01
76	25,32	MENTHADIENOL ISOMER	0,03
77	25,50	trans-PINOCARVEOL	0,12
78	25,54	ALLO-AROMADENDRENE	0,18
79	25,76	ISOBORNEOL	0,01
80	25,79	TERPENIC ESTER	0,02
81	25,85	ZONARENE	0,10
82	26,05	trans-p-2,8-MENTHADIEN-1-OL	0,03
83	26,18	alpha-HUMULENE	0,31
84	26,28	cis-4,5-MUUROLADIENE	0,05
85	26,31	COMPOUND Mw=174	0,01
86	26,62	alpha-TERPINEOL	9,85
87	26,80	BORNEOL	29,11
88	26,90	LEDENE	0,16
89	27,07	SESQUITERPENE	0,03
90	27,22	CARVENONE	0,21

Disclaimer & Caution

Please refer to all relevant technical information specific to the product, prior to use, The information contained in this document is obtained from current and reliable sources, New Directions Aromatics Inc, provides the information contained herein, but makes no representation as to its comprehensiveness or accuracy, Individuals receiving this information must exercise their independent judgment in determining its appropriateness for a particular purpose, The user of the product is solely responsible for compliance with all laws and regulations applying to the use of the products, including intellectual property rights of third parties, As the ordinary or otherwise use(s) of this product is outside the control of New Directions Aromatics Inc., no representation or warranty, expressed or implied, is made as to the effect(s) of such use(s), (including damage or injury), or the results obtained, The liability of New Directions Aromatics Inc, is limited to the value of the goods and does not include any consequential loss, New Directions Aromatics Inc, shall not be liable for any errors or delays in the content, or for any actions taken in reliance thereon, New Directions Aromatics Inc, shall not be responsible for any damages resulting from use of or reliance upon this information, In the event of any dispute, the Customer hereby agrees that Jurisdiction is limited to the province of Ontario,

GCMS ANALYSIS (cont'd,)

PRODUCT NAME: THYME ORGANIC ESSENTIAL OIL – 50023

Peak	RT (min)	Compound	%
91	27,28	GERMACRENE D	0,07
92	27,30	TERPENIC ESTER	0,07
93	27,37	MUUROLADIENE ISOMER	0,01
94	27,40	beta-SELINENE	0,04
95	27,47	alpha-MUUROLENE	0,18
96	27,49	alpha-SELINENE	0,08
97	27,59	CARVONE	0,04
98	27,71	trans-PIPERITOL	0,05
99	27,80	BICYCLOGERMACRENE	0,09
100	28,01	TERPENIC OXIDE	0,01
101	28,27	delta-CADINENE	0,57
102	28,39	gamma-CADINENE	0,46
103	28,53	SESQUITERPENE Mw=202	0,02
104	28,62	MENTHADIENOL ISOMER	0,08
105	28,74	trans-alpha-BISABOLENE	0,02
106	28,85	CUMINAL	0,01
107	28,92	MYRTENOL	0,04
108	28,95	CADINA-1,4-DIENE	0,04
109	28,99	cis-SABINOL	0,01
110	29,17	alpha-AMORPHENE	0,05
111	29,62	trans-SABINOL	0,02
112	29,85	trans-CARVEOL	0,05
113	30,01	CALAMENENE	0,05
114	30,13	THYMYL ACETATE	0,09
115	30,17	p-CYMENE-8-OL	0,14
116	30,57	E-GERANYL ACETONE	0,02
117	30,84	cis-CARVEOL	0,02
118	31,12	CARVACRYL ACETATE	0,01
119	31,35	MENTHADIENOL ISOMER	0,01
120	31,69	SESQUITERPENIC EPOXIDE	0,02

Disclaimer & Caution

Please refer to all relevant technical information specific to the product, prior to use, The information contained in this document is obtained from current and reliable sources, New Directions Aromatics Inc, provides the information contained herein, but makes no representation as to its comprehensiveness or accuracy, Individuals receiving this information must exercise their independent judgment in determining its appropriateness for a particular purpose, The user of the product is solely responsible for compliance with all laws and regulations applying to the use of the products, including intellectual property rights of third parties, As the ordinary or otherwise use(s) of this product is outside the control of New Directions Aromatics Inc., no representation or warranty, expressed or implied, is made as to the effect(s) of such use(s), (including damage or injury), or the results obtained, The liability of New Directions Aromatics Inc, is limited to the value of the goods and does not include any consequential loss, New Directions Aromatics Inc, shall not be liable for any errors or delays in the content, or for any actions taken in reliance thereon, New Directions Aromatics Inc, shall not be responsible for any damages resulting from use of or reliance upon this information, In the event of any dispute, the Customer hereby agrees that Jurisdiction is limited to the province of Ontario,

GCMS ANALYSIS (cont'd,)

PRODUCT NAME: THYME ORGANIC ESSENTIAL OIL – 50023

Peak	RT (min)	Compound	%
121	31,84	CALACORENE ISOMER	0,01
122	32,14	alpha-CALACORENE	0,03
123	32,16	cis-JASMONE	0,05
124	32,21	ALIPHATIC ALCOHOL	0,02
125	32,40	COMPOUND Mw=252	0,02
126	32,52	SESQUITERPENOL	0,02
127	32,60	SESQUITERPENIC EPOXIDE	0,03
128	32,76	COMPOUND Mw=180	0,01
129	33,42	ALIPHATIC ESTER	0,01
130	33,64	COMPOUND Mw=208	0,01
131	33,74	CARYOPHYLLENE EPOXIDE	0,37
132	34,06	SESQUITERPENIC EPOXIDE	0,03
133	34,60	LEDOL	0,02
134	34,97	EPOXY-6,7-HUMULENE	0,02
135	35,06	COMPOUND Mw=152	0,01
136	35,16	Epi-CUBENOL	0,04
137	35,32	CUBENOL	0,02
138	35,53	TERPENIC KETONE	0,07
139	35,83	CUMINOL	0,02
140	36,46	SPATHULENOL	0,08
141	36,54	EPOXY-TERPENIC ESTER Mw=170	0,35
142	36,93	SESQUITERPENIC EPOXIDE	0,02
143	37,02	ISOTHYMOL	0,08
144	37,13	EUGENOL	0,01
145	37,26	SORBIC ACID	0,02
146	37,41	THYMOL	2,80
147	37,50	T-CADINOL	0,63
148	37,73	alpha-MUUROLOL	0,02
149	37,78	ISOCARVACROL	0,04
150	37,92	delta-CADINOL	0,02

Disclaimer & Caution

Please refer to all relevant technical information specific to the product, prior to use, The information contained in this document is obtained from current and reliable sources, New Directions Aromatics Inc, provides the information contained herein, but makes no representation as to its comprehensiveness or accuracy, Individuals receiving this information must exercise their independent judgment in determining its appropriateness for a particular purpose, The user of the product is solely responsible for compliance with all laws and regulations applying to the use of the products, including intellectual property rights of third parties, As the ordinary or otherwise use(s) of this product is outside the control of New Directions Aromatics Inc., no representation or warranty, expressed or implied, is made as to the effect(s) of such use(s), (including damage or injury), or the results obtained, The liability of New Directions Aromatics Inc, is limited to the value of the goods and does not include any consequential loss, New Directions Aromatics Inc, shall not be liable for any errors or delays in the content, or for any actions taken in reliance thereon, New Directions Aromatics Inc, shall not be responsible for any damages resulting from use of or reliance upon this information, In the event of any dispute, the Customer hereby agrees that Jurisdiction is limited to the province of Ontario,

GCMS ANALYSIS (cont'd,)

PRODUCT NAME: THYME ORGANIC ESSENTIAL OIL – 50023

Peak	RT (min)	Compound	%
151	38,05	CARVACROL	6,84
152	38,23	CADALENE	0,01
153	38,65	alpha-CADINOL	0,04
154	39,87	CARYOPHYLLADIENOL ISOMER	0,02
155	39,96	CARYOPHYLLA-2,6-DIEN-5-alpha-OL	0,09
156	40,65	SESQUITERPENIC EPOXIDE	0,05
157	41,40	SESQUITERPENIC EPOXIDE	0,04
158	41,59	MANOYL OXIDE	0,01
		TOTAL	99,96

Disclaimer & Caution

Please refer to all relevant technical information specific to the product, prior to use, The information contained in this document is obtained from current and reliable sources, New Directions Aromatics Inc, provides the information contained herein, but makes no representation as to its comprehensiveness or accuracy, Individuals receiving this information must exercise their independent judgment in determining its appropriateness for a particular purpose, The user of the product is solely responsible for compliance with all laws and regulations applying to the use of the products, including intellectual property rights of third parties, As the ordinary or otherwise use(s) of this product is outside the control of New Directions Aromatics Inc., no representation or warranty, expressed or implied, is made as to the effect(s) of such use(s), (including damage or injury), or the results obtained, The liability of New Directions Aromatics Inc, is limited to the value of the goods and does not include any consequential loss, New Directions Aromatics Inc, shall not be liable for any errors or delays in the content, or for any actions taken in reliance thereon, New Directions Aromatics Inc, shall not be responsible for any damages resulting from use of or reliance upon this information, In the event of any dispute, the Customer hereby agrees that Jurisdiction is limited to the province of Ontario,