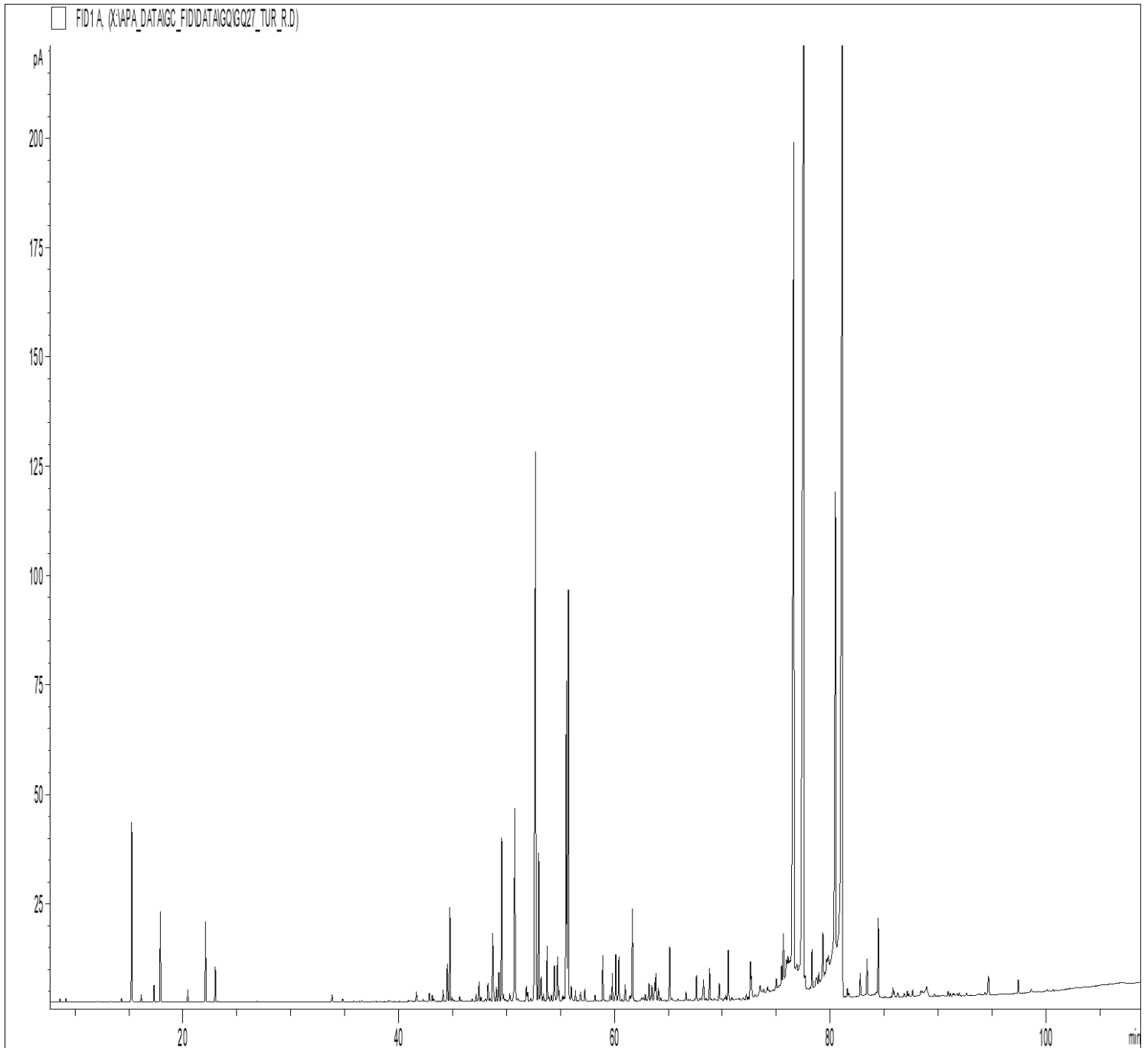


GCMS ANALYSIS

PRODUCT NAME: TURMERIC ESSENTIAL OIL -11148

DATE: March 8, 2022



Due to volume turnover, this report is not lot specific, It is representative of the quality of this oil produced by the manufacturer of this product, Specific lots may vary slightly as is the case in natural products,

GCMS ANALYSIS (cont'd,)

PRODUCT NAME: TURMERIC ESSENTIAL OIL -11148

Peak	RT (min)	Component name	%
1	15,25	alpha-PHELLANDRENE	1,16
2	16,12	alpha-TERPINENE	0,05
3	17,32	LIMONENE	0,11
4	17,90	1,8-CINEOLE	0,67
5	20,45	gamma-TERPINENE	0,09
6	22,10	p-CYMENE	0,56
7	23,01	TERPINOLENE	0,25
8	33,83	alpha,p-DIMETHYLSTYRENE	0,05
9	41,66	1-METHYL-4-ACETYLCYCLOHEX-1-ENE	0,08
10	42,84	alpha-CEDRENE	0,07
11	43,12	SESQUITERPENE	0,06
12	44,12	alpha-trans-BERGAMOTENE	0,09
13	44,51	CURCUMENE ISOMER Mw=202	0,31
14	44,75	beta-CARYOPHYLLENE	0,75
15	44,93	TERPINENE-4-OL	0,04
16	45,65	COMPOUND Mw=178	0,04
17	47,20	COMPOUND Mw=202	0,06
18	47,46	CURCUMENE ISOMER	0,16
19	47,64	COMPOUND Mw=202	0,03
20	48,05	COMPOUND Mw=202	0,03
21	48,28	CURCUMENE ISOMER	0,19
22	48,73	alpha-ACORADIENE	0,63
23	49,07	CURCUMENE ISOMER	0,11
24	49,30	alpha-HUMULENE	0,24
25	49,57	POLYENIC SESQUITERPENE Mw=202	1,34
26	49,73	E-beta-FARNESENE	0,06
27	50,30	CURCUMENE ISOMER	0,08
28	50,77	gamma-CURCUMENE	1,68
29	51,05	alpha-TERPINEOL	0,03
30	51,84	SESQUITERPENE Mw=202	0,13

Disclaimer & Caution

Please refer to all relevant technical information specific to the product, prior to use, The information contained in this document is obtained from current and reliable sources, New Directions Aromatics Inc, provides the information contained herein, but makes no representation as to its comprehensiveness or accuracy, Individuals receiving this information must exercise their independent judgment in determining its appropriateness for a particular purpose, The user of the product is solely responsible for compliance with all laws and regulations applying to the use of the products, including intellectual property rights of third parties, As the ordinary or otherwise use(s) of this product is outside the control of New Directions Aromatics Inc., no representation or warranty, expressed or implied, is made as to the effect(s) of such use(s), (including damage or injury), or the results obtained, The liability of New Directions Aromatics Inc, is limited to the value of the goods and does not include any consequential loss, New Directions Aromatics Inc, shall not be liable for any errors or delays in the content, or for any actions taken in reliance thereon, New Directions Aromatics Inc, shall not be responsible for any damages resulting from use of or reliance upon this information, In the event of any dispute, the Customer hereby agrees that Jurisdiction is limited to the province of Ontario, Canada.

GCMS ANALYSIS (cont'd.)

PRODUCT NAME: TURMERIC ESSENTIAL OIL -11148

Peak	RT (min)	Component name	%
31	51,98	SESQUITERPENE	0,08
32	52,60	SESQUITERPENE Mw=202	0,49
33	52,69	alpha-ZINGIBERENE	5,56
34	52,99	beta-BISABOLENE	1,22
35	53,22	COMPOUND Mw=218	0,23
36	53,44	SESQUITERPENE Mw=202	0,06
37	53,77	beta-CURCUMENE	0,42
38	53,92	AROMATIC COMPOUND	0,05
39	54,17	SESQUITERPENE	0,05
40	54,43	SESQUITERPENE Mw=202	0,35
41	54,74	E,E-alpha-FARNESENE	0,39
42	54,86	SESQUITERPENE	0,08
43	55,21	COMPOUND Mw=200	0,04
44	55,33	p-METHYLACETOPHENONE	0,04
45	55,57	beta-SESQUIPELLANDRENE	3,04
46	55,74	alpha-CURCUMENE	3,56
47	56,00	SESQUITERPENE	0,13
48	56,39	COMPOUND Mw=220	0,08
49	56,87	SESQUITERPENE Mw=202	0,09
50	57,27	trans-SABINOL	0,10
51	58,21	SESQUITERPENE	0,05
52	58,92	POLYENIC SESQUITERPENE Mw=202	0,37
53	59,61	CURCUMENIC COMPOUND	0,08
54	59,82	ALIPHATIC ALCOHOL	0,22
55	60,14	METHOXYPHENOLIC COMPOUND Mw=178 ISOMER	0,39
56	60,42	METHOXYPHENOLIC COMPOUND Mw=178 ISOMER	0,38
57	60,90	COMPOUND Mw=218	0,06
58	61,00	beta-VETIVENE	0,08
59	61,45	AROMATIC COMPOUND	0,04
60	61,55	POLYENIC SESQUITERPENE Mw=202	0,03

Disclaimer & Caution

Please refer to all relevant technical information specific to the product, prior to use, The information contained in this document is obtained from current and reliable sources, New Directions Aromatics Inc, provides the information contained herein, but makes no representation as to its comprehensiveness or accuracy, Individuals receiving this information must exercise their independent judgment in determining its appropriateness for a particular purpose, The user of the product is solely responsible for compliance with all laws and regulations applying to the use of the products, including intellectual property rights of third parties, As the ordinary or otherwise use(s) of this product is outside the control of New Directions Aromatics Inc., no representation or warranty, expressed or implied, is made as to the effect(s) of such use(s), (including damage or injury), or the results obtained, The liability of New Directions Aromatics Inc, is limited to the value of the goods and does not include any consequential loss, New Directions Aromatics Inc, shall not be liable for any errors or delays in the content, or for any actions taken in reliance thereon, New Directions Aromatics Inc, shall not be responsible for any damages resulting from use of or reliance upon this information, In the event of any dispute, the Customer hereby agrees that Jurisdiction is limited to the province of Ontario, Canada.

GCMS ANALYSIS (cont'd.)

PRODUCT NAME: TURMERIC ESSENTIAL OIL -11148

Peak	RT (min)	Component name	%
61	61,68	DEHYDROCURCUMENE	0,82
62	62,55	SABINOL ISOMER	0,04
63	62,71	AROMATIC COMPOUND	0,03
64	62,87	COMPOUND Mw=220	0,06
65	63,20	ALIPHATIC ALCOHOL	0,16
66	63,48	AROMATIC COMPOUND Mw=220	0,15
67	63,75	COMPOUND Mw=152	0,15
68	63,86	COMPOUND Mw=220	0,23
69	64,09	CURCUMENOL ISOMER	0,10
70	64,30	COMPOUND Mw=220	0,03
71	65,14	METHYL PHENYL PENTANONE ISOMER Mw=176	0,48
72	65,35	AROMATIC COMPOUND	0,03
73	66,63	beta-CALACORENE	0,07
74	67,61	AROMATIC COMPOUND Mw=200	0,23
75	67,96	CURCUMENIC COMPOUND Mw=218	0,03
76	68,26	CURCUMENIC COMPOUND Mw=218	0,22
77	68,83	AROMATIC COMPOUND	0,26
78	69,72	CURCUMENIC COMPOUND Mw=218	0,16
79	70,33	COMPOUND Mw=216	0,04
80	70,56	CURCUMENIC COMPOUND Mw=218	0,42
81	70,90	NEROLIDOL	0,04
82	71,95	COMPOUND Mw=220	0,03
83	72,24	CURCUMENIC COMPOUND Mw=218	0,06
84	72,41	AROMATIC COMPOUND	0,03
85	72,62	CURCUMENIC COMPOUND Mw=218	0,35
86	72,70	CURCUMENIC COMPOUND Mw=218	0,14
87	73,52	CURCUMENIC COMPOUND Mw=218	0,12
88	73,83	COMPOUND Mw=220	0,03
89	74,19	AROMATIC COMPOUND	0,03
90	75,00	SESQUITERPENOL	0,10

Disclaimer & Caution

Please refer to all relevant technical information specific to the product, prior to use, The information contained in this document is obtained from current and reliable sources, New Directions Aromatics Inc, provides the information contained herein, but makes no representation as to its comprehensiveness or accuracy, Individuals receiving this information must exercise their independent judgment in determining its appropriateness for a particular purpose, The user of the product is solely responsible for compliance with all laws and regulations applying to the use of the products, including intellectual property rights of third parties, As the ordinary or otherwise use(s) of this product is outside the control of New Directions Aromatics Inc., no representation or warranty, expressed or implied, is made as to the effect(s) of such use(s), (including damage or injury), or the results obtained, The liability of New Directions Aromatics Inc, is limited to the value of the goods and does not include any consequential loss, New Directions Aromatics Inc, shall not be liable for any errors or delays in the content, or for any actions taken in reliance thereon, New Directions Aromatics Inc, shall not be responsible for any damages resulting from use of or reliance upon this information, In the event of any dispute, the Customer hereby agrees that Jurisdiction is limited to the province of Ontario, Canada.

GCMS ANALYSIS (cont'd.)

PRODUCT NAME: TURMERIC ESSENTIAL OIL -11148

Peak	RT (min)	Component name	%
91	75,49	CURCUMENIC COMPOUND Mw=218	0,15
92	75,66	CURCUMENIC COMPOUND Mw=218	0,42
93	75,95	TURMERONE ISOMER	0,08
94	76,08	SESQUITERPENOL	0,05
95	76,63	DIHYDRO-ar-TURMERONE	10,62
96	76,91	AROMATIC COMPOUND	0,06
97	77,53	alpha-TUMERONE Mw=218	24,07
98	77,66	AROMATIC COMPOUND Mw=234	0,11
99	78,31	ALIPHATIC ESTER	0,33
100	78,68	CARVACROL	0,08
101	78,75	AROMATIC COMPOUND Mw=234	0,05
102	78,94	AROMATIC COMPOUND Mw=234	0,09
103	79,32	AROMATIC COMPOUND	0,42
104	79,67	AROMATIC COMPOUND Mw=214	0,10
105	79,85	AROMATIC COMPOUND	0,17
106	80,48	beta-TUMERONE Mw=218 (CURLONE)	5,13
107	81,12	Ar-TURMERONE Mw=216	22,99
108	81,59	AROMATIC COMPOUND Mw=220	0,08
109	81,72	SESQUITERPENIC EPOXIDE	0,04
110	82,78	AROMATIC COMPOUND Mw=220	0,20
111	83,42	AROMATIC COMPOUND Mw=220	0,31
112	84,46	E-alpha-ATLANTONE	0,82
113	85,81	ZINGIBERENOL	0,09
114	85,93	AROMATIC SESQUITERPENOL Mw=220	0,05
115	86,28	AROMATIC SESQUITERPENOL Mw=220	0,06
116	86,86	BENZOFURAN, 2,3-DEHYDRO Mw=120	0,04
117	87,14	CURCUMENIC COMPOUND Mw=218	0,05
118	87,29	CURCUMENIC COMPOUND Mw=218	0,03
119	87,64	AROMATIC SESQUITERPENOL Mw=220	0,07
120	88,41	NAPHTALENIC COMPOUND Mw=230	0,09

Disclaimer & Caution

Please refer to all relevant technical information specific to the product, prior to use, The information contained in this document is obtained from current and reliable sources, New Directions Aromatics Inc, provides the information contained herein, but makes no representation as to its comprehensiveness or accuracy, Individuals receiving this information must exercise their independent judgment in determining its appropriateness for a particular purpose, The user of the product is solely responsible for compliance with all laws and regulations applying to the use of the products, including intellectual property rights of third parties, As the ordinary or otherwise use(s) of this product is outside the control of New Directions Aromatics Inc., no representation or warranty, expressed or implied, is made as to the effect(s) of such use(s), (including damage or injury), or the results obtained, The liability of New Directions Aromatics Inc, is limited to the value of the goods and does not include any consequential loss, New Directions Aromatics Inc, shall not be liable for any errors or delays in the content, or for any actions taken in reliance thereon, New Directions Aromatics Inc, shall not be responsible for any damages resulting from use of or reliance upon this information, In the event of any dispute, the Customer hereby agrees that Jurisdiction is limited to the province of Ontario, Canada.

GCMS ANALYSIS (cont'd.)

PRODUCT NAME: TURMERIC ESSENTIAL OIL -11148

Peak	RT (min)	Component name	%
121	88,54	AROMATIC COMPOUND	0,07
122	88,92	COMPOUND Mw=152	0,30
123	89,66	AROMATIC COMPOUND	0,03
124	90,93	AROMATIC COMPOUND	0,05
125	91,13	COMPOUND Mw=230	0,03
126	91,39	COMPOUND Mw=232	0,03
127	91,80	AROMATIC COMPOUND	0,04
128	91,98	AROMATIC COMPOUND	0,04
129	92,64	AROMATIC COMPOUND	0,03
130	94,35	VANILLIN	0,03
131	94,68	AROMATIC COMPOUND	0,24
132	97,44	AROMATIC COMPOUND Mw=218	0,12
133	98,63	AROMATIC COMPOUND Mw=234	0,04
134	108,99	PALMITIC ACID	0,03
		TOTAL	99,38

Disclaimer & Caution

Please refer to all relevant technical information specific to the product, prior to use, The information contained in this document is obtained from current and reliable sources, New Directions Aromatics Inc, provides the information contained herein, but makes no representation as to its comprehensiveness or accuracy, Individuals receiving this information must exercise their independent judgment in determining its appropriateness for a particular purpose, The user of the product is solely responsible for compliance with all laws and regulations applying to the use of the products, including intellectual property rights of third parties, As the ordinary or otherwise use(s) of this product is outside the control of New Directions Aromatics Inc., no representation or warranty, expressed or implied, is made as to the effect(s) of such use(s), (including damage or injury), or the results obtained, The liability of New Directions Aromatics Inc, is limited to the value of the goods and does not include any consequential loss, New Directions Aromatics Inc, shall not be liable for any errors or delays in the content, or for any actions taken in reliance thereon, New Directions Aromatics Inc, shall not be responsible for any damages resulting from use of or reliance upon this information, In the event of any dispute, the Customer hereby agrees that Jurisdiction is limited to the province of Ontario, Canada.