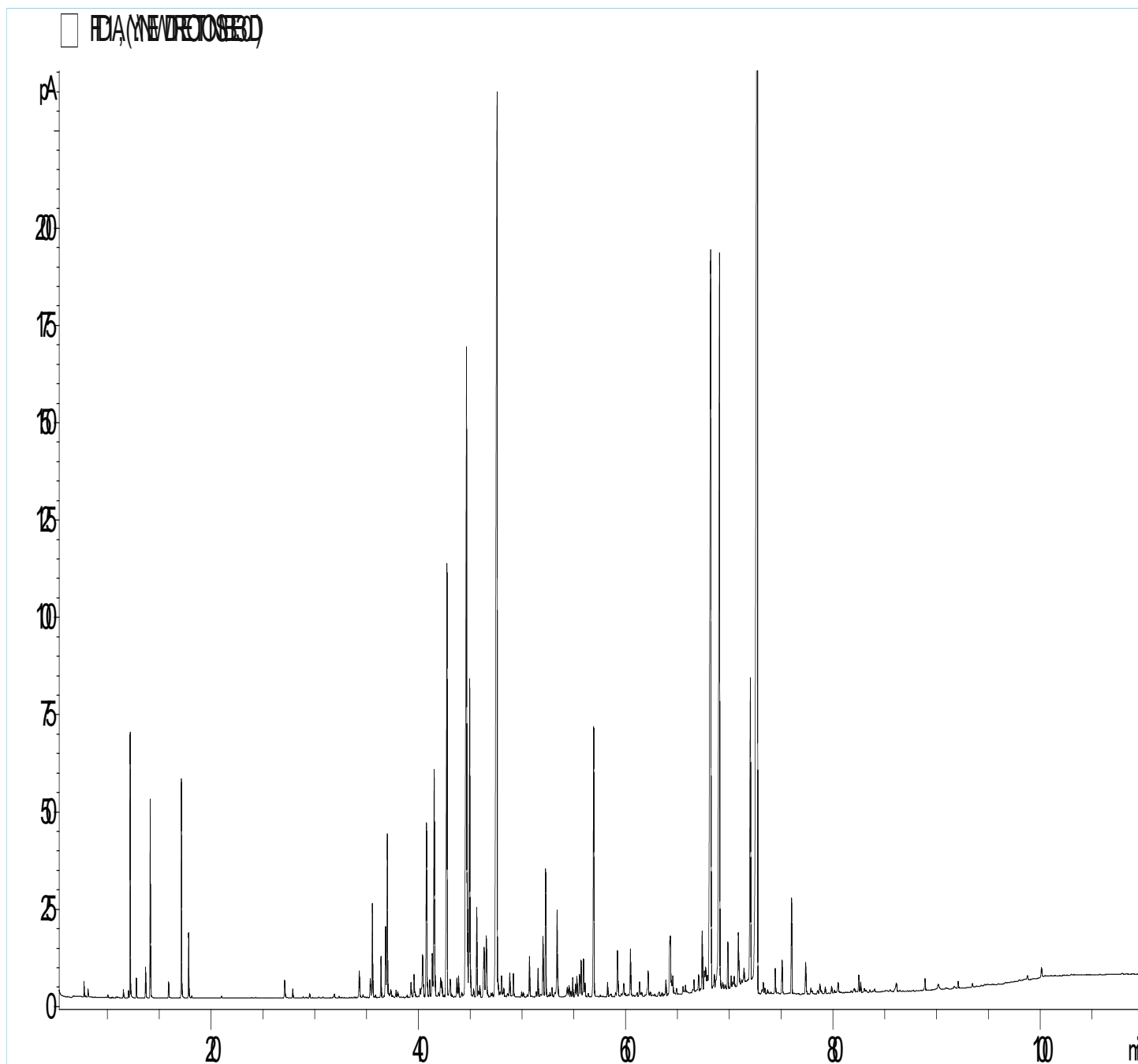


## GCMS ANALYSIS

PRODUCT NAME: TURMERIC ORGANIC ESSENTIAL OIL - 50073

DATE: March 19, 2020



*Due to volume turnover, this report is not lot specific, It is representative of the quality of this oil produced by the manufacturer of this product, Specific lots may vary slightly as is the case in natural products,*

### GCMS ANALYSIS (cont'd.)

PRODUCT NAME: TURMERIC ORGANIC ESSENTIAL OIL - 50073

Peak	RT (min)	Compound	%
1	7,74	alpha-PINENE	0,06
2	12,20	alpha-PHELLANDRENE	1,27
3	12,79	alpha-TERPINENE	0,10
4	13,68	LIMONENE	0,17
5	14,14	1,8-CINEOLE	1,06
6		beta-PHELLANDRENE	
7	15,90	gamma-TERPINENE	0,09
8	17,14	p-CYMENE	1,21
9	17,84	TERPINOLENE	0,37
10	27,08	alpha-p-DIMETHYLSTYRENE	0,14
11	27,87	ALIPHATIC KETONE	0,06
12	34,29	4-ACETYLI-1-METHYLCYCLOHEXENE	0,23
13	35,35	alpha-CEDRENE	0,16
14	35,56	alpha-SANTALENE	0,68
15	36,39	alpha-trans-BERGAMOTENE	0,27
16	36,83	CURCUMENE ISOMER Mw=202	0,51
17	37,00	beta-CARYOPHYLLENE	1,22
18	37,33	TERPINENE-4-OL	0,08
19	37,84	epi-beta-SANTALENE	0,06
20	38,01	AROMADENDRENE	0,05
21	39,29	ALKYL COMPOUND	0,15
22	39,59	COMPOUND Mw=202	0,18
23	40,17	SESQUITERPENE	0,07
24	40,30	beta-SANTALENE	0,06
25	40,41	CURCUMENE ISOMER	0,36
26	40,50	CURCUMENE ISOMER	0,07
27	40,79	alpha-ACORADIENE	1,33
28	40,85	SESQUITERPENE Mw=202	0,10
29	41,10	alpha-HUMULENE	0,14
30	41,34	CURCUMENE ISOMER	0,36

#### Disclaimer & Caution

Please refer to all relevant technical information specific to the product, prior to use. The information contained in this document is obtained from current and reliable sources, New Directions Aromatics Inc, provides the information contained herein, but makes no representation as to its comprehensiveness or accuracy. Individuals receiving this information must exercise their independent judgment in determining its appropriateness for a particular purpose. The user of the product is solely responsible for compliance with all laws and regulations applying to the use of the products, including intellectual property rights of third parties. As the ordinary or otherwise use(s) of this product is outside the control of New Directions Aromatics Inc., no representation or warranty, expressed or implied, is made as to the effect(s) of such use(s), (including damage or injury), or the results obtained. The liability of New Directions Aromatics Inc, is limited to the value of the goods and does not include any consequential loss. New Directions Aromatics Inc, shall not be liable for any errors or delays in the content, or for any actions taken in reliance thereon. New Directions Aromatics Inc, shall not be responsible for any damages resulting from use of or reliance upon this information. In the event of any dispute, the Customer hereby agrees that Jurisdiction is limited to the province of Ontario.

### GCMS ANALYSIS (cont'd.)

PRODUCT NAME: TURMERIC ORGANIC ESSENTIAL OIL - 50073

Peak	RT (min)	Compound	%
31	41,53	POLYENIC SESQUITERPENE Mw=202	1,83
32	41,59	E-beta-FARNESENE	0,15
33	41,96	CURCUMENE ISOMER	0,06
34	42,15	Z-beta-FARNESENE	0,16
35	42,27	CURCUMENE ISOMER	0,15
36	42,77	<b>gamma-CURCUMENE</b>	<b>3,44</b>
37	42,78	alpha-TERPINEOL	0,34
38	43,07	ALKYL COMPOUND	0,17
39	43,72	POLYENIC SESQUITERPENE Mw=202	0,16
40	43,88	SESQUITERPENE	0,16
41	44,66	<b>alpha-ZINGIBERENE</b>	<b>6,61</b>
42	44,71	SESQUITERPENE Mw=202	0,67
43	44,96	beta-BISABOLENE	2,43
44	45,01	COMPOUND Mw=162	0,19
45	45,33	SESQUITERPENE Mw=202	0,07
46	45,64	beta-CURCUMENE	0,62
47	45,93	delta-CADINENE	0,09
48	46,30	p-METHYLACETOPHENONE	0,15
49	46,34	DEHYDRO AROMADENDRENE Mw=202	0,39
50	46,56	E,E-alpha-FARNESENE	0,58
51	47,60	<b>beta-SESQUIPELLANDRENE</b>	<b>3,22</b>
52	47,61	<b>alpha-CURCUMENE</b>	<b>8,26</b>
53	47,66	COMPOUND Mw=200	0,13
54	48,03	POLYENIC SESQUITERPENE Mw=202	0,20
55	48,24	COMPOUND Mw=174	0,08
56	48,82	METHOXYPHENOLIC COMPOUND Mw=178 ISOMER	0,20
57	49,17	trans-SABINOL	0,19
58	50,73	POLYENIC SESQUITERPENE Mw=202	0,32
59	51,55	AROMATIC COMPOUND	0,21
60	52,03	METHOXYPHENOLIC COMPOUND Mw=178 ISOMER	0,48

#### Disclaimer & Caution

Please refer to all relevant technical information specific to the product, prior to use. The information contained in this document is obtained from current and reliable sources. New Directions Aromatics Inc. provides the information contained herein, but makes no representation as to its comprehensiveness or accuracy. Individuals receiving this information must exercise their independent judgment in determining its appropriateness for a particular purpose. The user of the product is solely responsible for compliance with all laws and regulations applying to the use of the products, including intellectual property rights of third parties. As the ordinary or otherwise use(s) of this product is outside the control of New Directions Aromatics Inc., no representation or warranty, expressed or implied, is made as to the effect(s) of such use(s), (including damage or injury), or the results obtained. The liability of New Directions Aromatics Inc. is limited to the value of the goods and does not include any consequential loss. New Directions Aromatics Inc. shall not be liable for any errors or delays in the content, or for any actions taken in reliance thereon. New Directions Aromatics Inc. shall not be responsible for any damages resulting from use of or reliance upon this information. In the event of any dispute, the Customer hereby agrees that Jurisdiction is limited to the province of Ontario.

### GCMS ANALYSIS (cont'd.)

PRODUCT NAME: TURMERIC ORGANIC ESSENTIAL OIL - 50073

Peak	RT (min)	Compound	%
61	52,28	METHOXYPHENOLIC COMPOUND Mw=178 ISOMER	0,91
62	52,90	beta-VETIVENE	0,09
63	53,39	DEHYDROCURCUMENE	0,67
64	54,37	COMPOUND Mw=152	0,10
65	54,55	COMPOUND Mw=248	0,09
66	54,90	AROMATIC COMPOUND Mw=220	0,14
67	55,16	CALACORENE ISOMER	0,09
68	55,30	AROMATIC COMPOUND Mw=220	0,15
69	55,55	AROMATIC COMPOUND Mw=220	0,17
70	55,70	AROMATIC COMPOUND	0,28
71	55,93	VESTITENONE	0,30
72	56,08	AROMATIC COMPOUND	0,11
73	56,92	METHYL PHENYL PENTANONE ISOMER Mw=176	2,07
74	58,26	COMPOUND Mw=200	0,10
75	59,21	CURCUMENIC COMPOUND Mw=218	0,41
76	59,82	COMPOUND Mw=200	0,12
77	60,47	ALIPHATIC ESTER	0,36
78	61,34	CURCUMENIC COMPOUND Mw=218	0,12
79	62,17	CURCUMENIC COMPOUND Mw=218	0,21
80	63,88	CURCUMENIC COMPOUND Mw=218	0,14
81	64,26	AROMATIC COMPOUND Mw=162	0,39
82	64,32	CURCUMENIC COMPOUND Mw=218	0,43
83	64,43	SESQUITERPENONE	0,12
84	64,56	COMPOUND Mw=152	0,15
85	65,54	AROMATIC COMPOUND Mw=220	0,05
86	65,78	AROMATIC COMPOUND	0,05
87	66,60	SESQUITERPENOL	0,09
88	67,04	CURCUMENIC COMPOUND Mw=218	0,11
89	67,39	TURMERONE ISOMER	0,48
90	67,60	AROMATIC COMPOUND	0,12

#### Disclaimer & Caution

Please refer to all relevant technical information specific to the product, prior to use. The information contained in this document is obtained from current and reliable sources, New Directions Aromatics Inc, provides the information contained herein, but makes no representation as to its comprehensiveness or accuracy. Individuals receiving this information must exercise their independent judgment in determining its appropriateness for a particular purpose. The user of the product is solely responsible for compliance with all laws and regulations applying to the use of the products, including intellectual property rights of third parties. As the ordinary or otherwise use(s) of this product is outside the control of New Directions Aromatics Inc., no representation or warranty, expressed or implied, is made as to the effect(s) of such use(s), (including damage or injury), or the results obtained. The liability of New Directions Aromatics Inc, is limited to the value of the goods and does not include any consequential loss. New Directions Aromatics Inc, shall not be liable for any errors or delays in the content, or for any actions taken in reliance thereon. New Directions Aromatics Inc, shall not be responsible for any damages resulting from use of or reliance upon this information. In the event of any dispute, the Customer hereby agrees that Jurisdiction is limited to the province of Ontario.

### GCMS ANALYSIS (cont'd.)

PRODUCT NAME: TURMERIC ORGANIC ESSENTIAL OIL - 50073

Peak	RT (min)	Compound	%
91	67,71	SESQUITERPENOL	0,15
92	68,21	<b>DIHYDRO-ar-TURMERONE</b>	<b>8,67</b>
93	68,56	AROMATIC COMPOUND	0,11
94	68,72	CURCUMENIC COMPOUND Mw=218	0,05
95	68,86	CURCUMENIC COMPOUND Mw=218	0,11
96	69,06	alpha-TUMERONE Mw=218	9,73
97	69,13	THYMOL	0,12
98	69,87	CURCUMENIC COMPOUND Mw=218	0,36
99	70,19	CARVACROL	0,09
100	70,48	AROMATIC COMPOUND Mw=234	0,08
101	70,88	CURCUMENIC COMPOUND Mw=218	0,50
102	71,42	COMPOUND Mw=218	0,14
103	72,04	<b>beta-TUMERONE Mw=218 (CURLONE)</b>	<b>2,60</b>
104	72,72	<b>Ar-TURMERONE Mw=216</b>	<b>23,57</b>
105	73,28	SESQUITERPENIC EPOXIDE	0,10
106	73,45	SESQUITERPENOL	0,05
107	74,44	AROMATIC SESQUITERPENOL Mw=220	0,22
108	75,10	AROMATIC SESQUITERPENOL Mw=220	0,28
109	76,01	E-alpha-ATLANTONE	0,77
110	77,36	ZINGIBERENOL	0,25
111	79,25	NAPHTALENIC COMPOUND Mw=230	0,06
112	79,86	COMPOUND Mw=152	0,06
113	80,49	AROMATIC COMPOUND	0,13
114	82,49	NAPHTALENIC COMPOUND Mw=230	0,14
115	82,67	AROMATIC COMPOUND	0,09
116	86,11	COMPOUND Mw=218	0,11
117	88,88	COMPOUND Mw=234	0,10
118	90,14	XANTHORRHIZOL	0,09
119	92,08	ACORENONE	0,06
120	100,11	ZINGIBEROL	0,10
		<b>TOTAL</b>	<b>99,81</b>

**Disclaimer & Caution**

Please refer to all relevant technical information specific to the product, prior to use. The information contained in this document is obtained from current and reliable sources, New Directions Aromatics Inc, provides the information contained herein, but makes no representation as to its comprehensiveness or accuracy. Individuals receiving this information must exercise their independent judgment in determining its appropriateness for a particular purpose. The user of the product is solely responsible for compliance with all laws and regulations applying to the use of the products, including intellectual property rights of third parties. As the ordinary or otherwise use(s) of this product is outside the control of New Directions Aromatics Inc., no representation or warranty, expressed or implied, is made as to the effect(s) of such use(s), (including damage or injury), or the results obtained. The liability of New Directions Aromatics Inc, is limited to the value of the goods and does not include any consequential loss. New Directions Aromatics Inc, shall not be liable for any errors or delays in the content, or for any actions taken in reliance thereon. New Directions Aromatics Inc, shall not be responsible for any damages resulting from use of or reliance upon this information. In the event of any dispute, the Customer hereby agrees that Jurisdiction is limited to the province of Ontario.