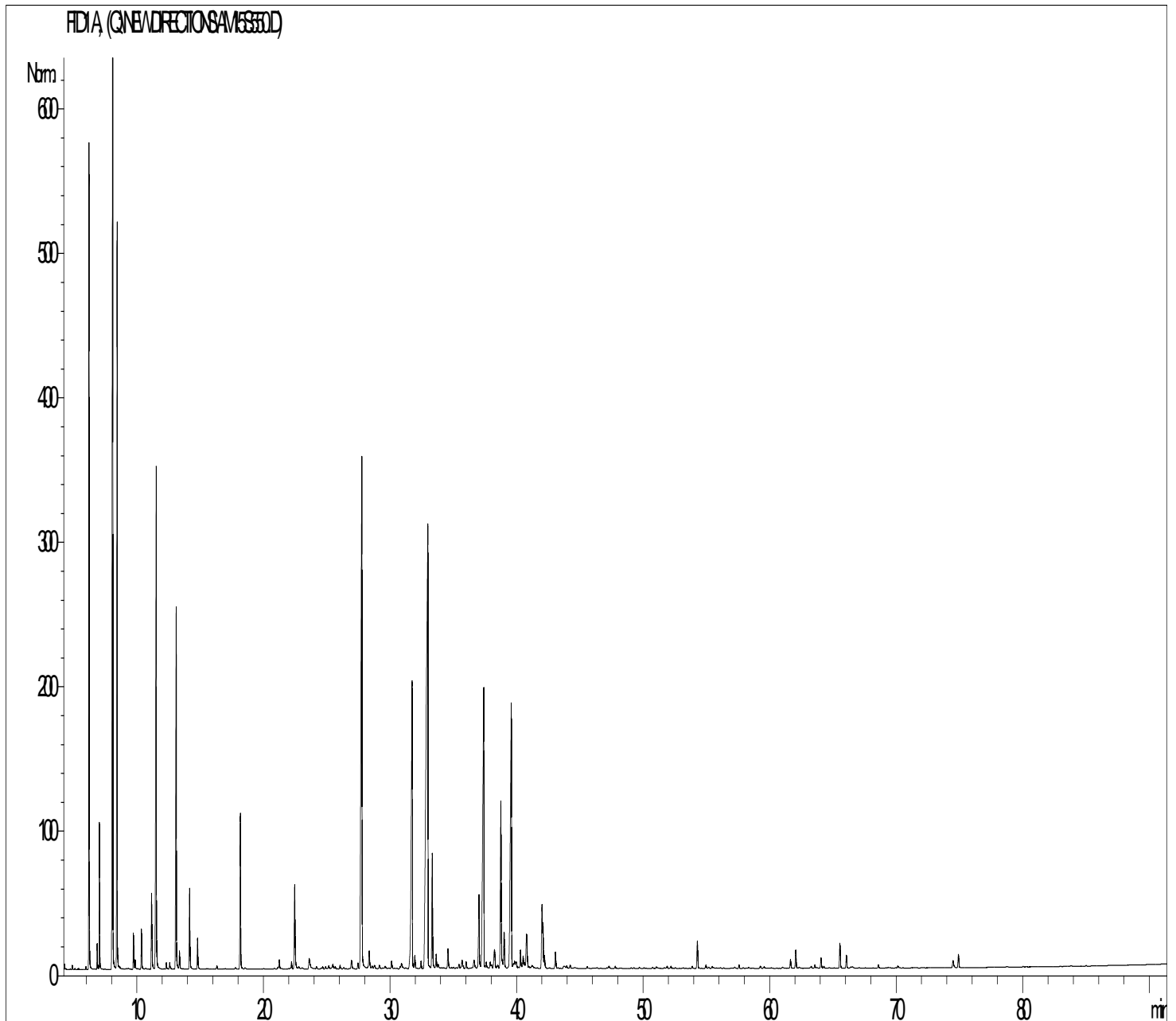




GCMS ANALYSIS

PRODUCT NAME: YARROW ESSENTIAL OIL - 11153

DATE: August 13, 2018



Due to volume turnover, this report is not lot specific. It is representative of the quality of this oil produced by the manufacturer of this product. Specific lots may vary slightly as is the case in natural products.



GCMS ANALYSIS (cont'd.)
PRODUCT NAME: YARROW ESSENTIAL OIL - 11153

Peak	RT (min)	Compound name	%
1	4,3	ACETONE	0,03
2	4,8	ISOVALERALDEHYDE	0,03
3	5,9	TRICYCLENE	0,02
4	6,1	alpha-PINENE	5,35
5	6,2	alpha-THUYENE	0,28
6	6,8	alpha-FENCHENE	0,18
7	7,0	CAMPHENE	1,10
8	8,0	beta-PINENE	13,66
9	8,4	SABINENE	6,61
10	8,6	PINADIENE	0,04
11	9,7	beta-MYRCENE	0,32
12	9,8	alpha-PHELLANDRENE	0,10
13	9,9	psi-LIMONENE	0,02
14	10,3	alpha-TERPINENE	0,40
15	10,7	2,3-DEHYDRO-1,8-CINEOLE	0,02
16	11,1	LIMONENE	0,92
17	11,5	1,8-CINEOLE	5,82
18	12,3	FURAN,2-PENTYL	0,08
19	12,6	Cis-beta-OCIMENE	0,09
20	13,0	gamma-TERPINENE	4,08
21	13,3	Trans-beta-OCIMENE	0,21
22	14,1	p-CYMENE	0,92
23	14,7	TERPINOLENE	0,36
24	16,3	TRIDECANE	0,05
25	17,7	6-METHYL-5-HEPTEN-2-ONE	0,02
26	18,2	ARTEMISIA CETONE	1,82
27	18,5	1-HEXANOL	0,03
28	20,8	FENCHONE	0,03
29	21,1	NONANAL	0,02
30	21,2	YOMOGLI ALCOHOL	0,11

Disclaimer & Caution

Please refer to all relevant technical information specific to the product, prior to use. The information contained in this document is obtained from current and reliable sources. New Directions Aromatics Inc. provides the information contained herein, but makes no representation as to its comprehensiveness or accuracy. Individuals receiving this information must exercise their independent judgment in determining its appropriateness for a particular purpose. The user of the product is solely responsible for compliance with all laws and regulations applying to the use of the products, including intellectual property rights of third parties. As the ordinary or otherwise use(s) of this product is outside the control of New Directions Aromatics Inc., no representation or warranty, expressed or implied, is made as to the effect(s) of such use(s), (including damage or injury), or the results obtained. The liability of New Directions Aromatics Inc. is limited to the value of the goods and does not include any consequential loss. New Directions Aromatics Inc. shall not be liable for any errors or delays in the content, or for any actions taken in reliance thereon. New Directions Aromatics Inc. shall not be responsible for any damages resulting from use of or reliance upon this information. In the event of any dispute, the Customer hereby agrees that Jurisdiction is limited to the province of Ontario.

GCMS ANALYSIS (cont'd.)

PRODUCT NAME: YARROW ESSENTIAL OIL - 11153

Peak	RT (min)	Compound name	%
31	22,2	SESQUITERPENE	0,10
32	22,4	alpha-THUYONE	1,25
33	22,7	SESQUITERPENE	0,05
34	23,0	alpha,p-DIMETHYLSTYRENE	0,04
35	23,6	beta-THUYONE	0,14
36	23,7	COMPOUND Mw=152	0,09
37	24,2	COMPOUND Mw=174	0,03
38	24,6	1-OCTEN-3-OL	0,05
39	24,9	alpha-CUBEBENE	0,04
40	25,1	Trans-THUYANOL	0,06
41	25,5	delta-ELEMENE	0,10
42	25,6	COMPOUND Mw=174	0,03
43	26,0	BICYCLOELEMENE	0,05
44	26,3	YLANGENE	0,03
45	26,9	alpha-COPAENE	0,15
46	27,4	alpha-BOURBONENE	0,07
47	27,7	CAMPHOR	9,23
48	28,3	beta-BOURBONENE	0,34
49	28,5	SESQUITERPENE	0,05
50	28,7	SESQUITERPENE	0,07
51	29,1	alpha-ISOCOMENE	0,07
52	29,4	BERGAMOTENE ISOMER	0,03
53	29,6	beta1-CUBEBENE	0,06
54	30,1	LINALOOL	0,17
55	30,8	Trans-p-MENTH-2-EN-1-OL	0,03
56	30,9	PINOCARVONE	0,13
57	31,7	BORNYL ACETATE	5,40
58	31,9	ISOBORNYL ACETATE	0,19
59	32,4	alpha,cis-BERGAMOTENE	0,10
60	32,9	beta-CARYOPHYLLENE	13,76

Disclaimer & Caution

Please refer to all relevant technical information specific to the product, prior to use. The information contained in this document is obtained from current and reliable sources. New Directions Aromatics Inc. provides the information contained herein, but makes no representation as to its comprehensiveness or accuracy. Individuals receiving this information must exercise their independent judgment in determining its appropriateness for a particular purpose. The user of the product is solely responsible for compliance with all laws and regulations applying to the use of the products, including intellectual property rights of third parties. As the ordinary or otherwise use(s) of this product is outside the control of New Directions Aromatics Inc., no representation or warranty, expressed or implied, is made as to the effect(s) of such use(s), (including damage or injury), or the results obtained. The liability of New Directions Aromatics Inc. is limited to the value of the goods and does not include any consequential loss. New Directions Aromatics Inc. shall not be liable for any errors or delays in the content, or for any actions taken in reliance thereon. New Directions Aromatics Inc. shall not be responsible for any damages resulting from use of or reliance upon this information. In the event of any dispute, the Customer hereby agrees that Jurisdiction is limited to the province of Ontario.

GCMS ANALYSIS (cont'd.)
PRODUCT NAME: YARROW ESSENTIAL OIL - 11153

Peak	RT (min)	Compound name	%
61	33,3	TERPINENE-4-OL	1,59
62	33,6	AROMADENDRENE	0,21
63	33,8	MYRTENAL	0,08
64	34,6	4-THUYEN-2-alpha-YL ACETATE	0,31
65	35,4	SESQUITERPENE	0,07
66	35,7	SESQUITERPENE	0,17
67	36,0	Z-beta-FARNESENE	0,10
68	36,6	SESQUITERPENE	0,17
69	37,0	alpha-HUMULENE	1,13
70	37,4	E-beta-FARNESENE	5,65
71	37,6	SESQUITERPENE	0,09
72	37,9	NERAL	0,09
73	38,0	SESQUITERPENE	0,06
74	38,2	gamma-MUUROLENE	0,40
75	38,5	SESQUITERPENE	0,06
76	38,7	BORNEOL	2,52
77	39,0	alpha-TERPINEOL	0,54
78	39,6	GERMACRENE D	5,47
79	39,7	SESQUITERPENE	0,07
80	39,8	SESQUITERPENE	0,11
81	39,9	beta-SELINENE	0,14
82	40,3	alpha-ZINGIBERENE	0,27
83	40,5	alpha-MUUROLENE	0,19
84	40,6	beta-BISABOLENE	0,08
85	40,7	BICYCLOGERMACRENE	0,73
86	41,2	SESQUITERPENE	0,11
87	42,0	alpha-FARNESENE	0,89
88	42,1	delta-CADINENE	0,55
89	42,2	gamma-CADINENE	0,21
90	43,0	SESQUITERPENE	0,26

Disclaimer & Caution

Please refer to all relevant technical information specific to the product, prior to use. The information contained in this document is obtained from current and reliable sources. New Directions Aromatics Inc. provides the information contained herein, but makes no representation as to its comprehensiveness or accuracy. Individuals receiving this information must exercise their independent judgment in determining its appropriateness for a particular purpose. The user of the product is solely responsible for compliance with all laws and regulations applying to the use of the products, including intellectual property rights of third parties. As the ordinary or otherwise use(s) of this product is outside the control of New Directions Aromatics Inc., no representation or warranty, expressed or implied, is made as to the effect(s) of such use(s), (including damage or injury), or the results obtained. The liability of New Directions Aromatics Inc. is limited to the value of the goods and does not include any consequential loss. New Directions Aromatics Inc. shall not be liable for any errors or delays in the content, or for any actions taken in reliance thereon. New Directions Aromatics Inc. shall not be responsible for any damages resulting from use of or reliance upon this information. In the event of any dispute, the Customer hereby agrees that Jurisdiction is limited to the province of Ontario.

GCMS ANALYSIS (cont'd.)
PRODUCT NAME: YARROW ESSENTIAL OIL - 11153

Peak	RT (min)	Compound name	%
91	43,2	SESQUITERPENE	0,02
92	43,7	CADINA-1,4-DIENE	0,07
93	43,9	MYRTENOL	0,04
94	44,2	alpha-AMORPHENE	0,04
95	45,5	COMPOUND Mw=190	0,03
96	47,3	GERANIOL	0,04
97	47,7	E-GERANYL ACETONE	0,03
98	49,3	ALIPHATIC ESTER	0,03
99	49,7	SESQUITERPENIC EPOXIDE	0,04
100	50,7	alpha-CALACORENE	0,02
101	51,0	SESQUITERPENIC EPOXIDE	0,03
102	51,9	ALIPHATIC ESTER	0,04
103	52,2	beta-IONONE	0,04
104	52,5	Trans-JASMONE	0,03
105	53,8	ISOCARYOPHYLLENE EPOXIDE	0,03
106	54,2	CARYOPHYLLENE OXIDE	0,42
107	54,9	SESQUITERPENIC EPOXIDE	0,06
108	55,2	ALIPHATIC ESTER	0,02
109	55,4	DEHYDRO-beta-IONONE	0,04
110	57,2	EPOXY-6,7-HUMULENE	0,04
111	57,6	NEROLIDOL	0,04
112	59,2	SESQUITERPENOL	0,04
113	59,5	SESQUITERPENOL	0,03
114	61,0	ALIPHATIC ESTER	0,04
115	61,6	SPATHULENOL	0,13
116	62,0	BISABOLOL OXIDE B	0,27
117	62,3	SESQUITERPENOL	0,02
118	63,3	EUGENOL	0,03
119	63,5	gamma-EUDES MOL + T-CADINOL	0,05
120	63,7	NONANOIC ACID	0,01

Disclaimer & Caution

Please refer to all relevant technical information specific to the product, prior to use. The information contained in this document is obtained from current and reliable sources. New Directions Aromatics Inc. provides the information contained herein, but makes no representation as to its comprehensiveness or accuracy. Individuals receiving this information must exercise their independent judgment in determining its appropriateness for a particular purpose. The user of the product is solely responsible for compliance with all laws and regulations applying to the use of the products, including intellectual property rights of third parties. As the ordinary or otherwise use(s) of this product is outside the control of New Directions Aromatics Inc., no representation or warranty, expressed or implied, is made as to the effect(s) of such use(s), (including damage or injury), or the results obtained. The liability of New Directions Aromatics Inc. is limited to the value of the goods and does not include any consequential loss. New Directions Aromatics Inc. shall not be liable for any errors or delays in the content, or for any actions taken in reliance thereon. New Directions Aromatics Inc. shall not be responsible for any damages resulting from use of or reliance upon this information. In the event of any dispute, the Customer hereby agrees that Jurisdiction is limited to the province of Ontario.

GCMS ANALYSIS (cont'd.)

PRODUCT NAME: YARROW ESSENTIAL OIL - 11153

Peak	RT (min)	Compound name	%
121	64,0	BISABOLONE OXIDE	0,15
122	64,2	THYMOL	0,02
123	64,7	alpha-MUUROLOL	0,01
124	65,5	CARVACROL	0,36
125	66,0	alpha-BISABOLOL	0,18
126	66,4	AROMATIC COMPOUND	0,03
127	66,5	AROMATIC COMPOUND	0,03
128	68,6	CAPRIC ACID	0,04
129	70,1	MATRICARIA ESTER Mw=174	0,03
130	74,5	CHAMAZULENE	0,14
131	74,9	SESQUITERPENIC EPOXIDE	0,20
		TOTAL	99,91

Disclaimer & Caution

Please refer to all relevant technical information specific to the product, prior to use. The information contained in this document is obtained from current and reliable sources. New Directions Aromatics Inc. provides the information contained herein, but makes no representation as to its comprehensiveness or accuracy. Individuals receiving this information must exercise their independent judgment in determining its appropriateness for a particular purpose. The user of the product is solely responsible for compliance with all laws and regulations applying to the use of the products, including intellectual property rights of third parties. As the ordinary or otherwise use(s) of this product is outside the control of New Directions Aromatics Inc., no representation or warranty, expressed or implied, is made as to the effect(s) of such use(s), (including damage or injury), or the results obtained. The liability of New Directions Aromatics Inc. is limited to the value of the goods and does not include any consequential loss. New Directions Aromatics Inc. shall not be liable for any errors or delays in the content, or for any actions taken in reliance thereon. New Directions Aromatics Inc. shall not be responsible for any damages resulting from use of or reliance upon this information. In the event of any dispute, the Customer hereby agrees that Jurisdiction is limited to the province of Ontario.