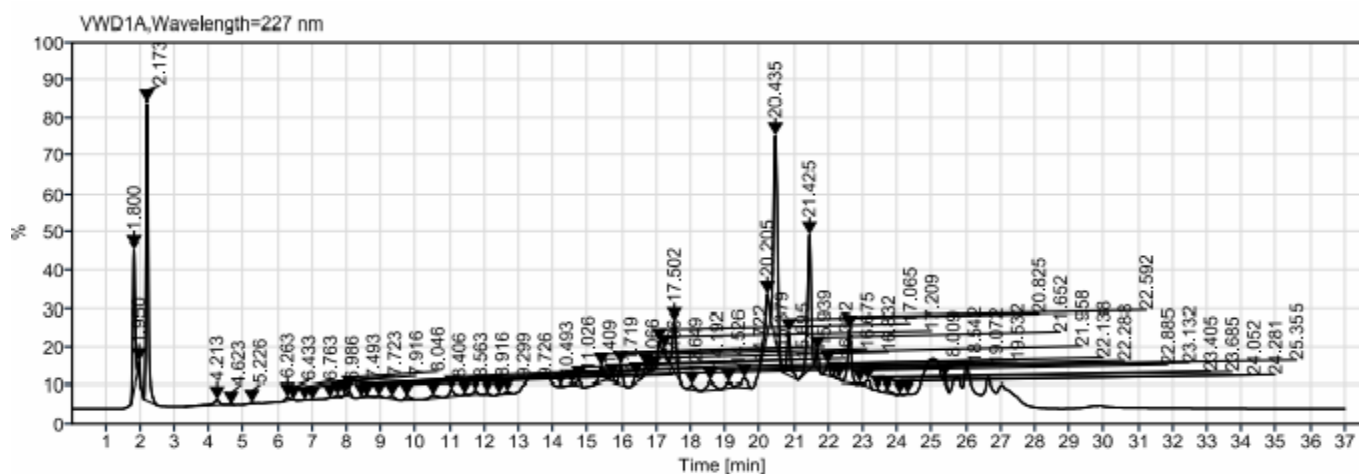


ASSAY ANALYSIS

SAMPLE NAME: ASHWAGANDHA LIQUID EXTRACT - 100% NATURAL (STANDARDIZED)
DATE: November 23, 2021

Determination of Withanolides Content by HPLC



Peak Number	Ret Time [min]	Area	Peak Width	Area %	Name
30	15.38	720792	72481	0.305	Withanolide IV
41	19.51	623973	61709	0.147	Withanolide V & VI
45	21.42	5503447	189778	0.301	Withanolide A
47	22.14	64373	536459	0.113	Withanolide A
48	22.29	47584	467631	0.119	Withanone
54	25.35	159893	589526	0.693	Withanolide B
Total				1.68%	Total Withanolide

Chromatographic Conditions

Column: Promosil C18 5um 4.6*250 mm
Temperature: 35° C

Flow Velocity: 1.0 mL/min

Disclaimer & Caution

Please refer to all relevant technical information specific to the product, prior to use. The information contained in this document is obtained from current and reliable sources. New Directions Aromatics Inc. provides the information contained herein, but makes no representation as to its comprehensiveness or accuracy. Individuals receiving this information must exercise their independent judgment in determining its appropriateness for a particular purpose. The user of the product is solely responsible for compliance with all laws and regulations applying to the use of the products, including intellectual property rights of third parties. As the ordinary or otherwise use(s) of this product is outside the control of New Directions Aromatics Inc., no representation or warranty, expressed or implied, is made as to the effect(s) of such use(s), (including damage or injury), or the results obtained. The liability of New Directions Aromatics Inc. is limited to the value of the goods and does not include any consequential loss. New Directions Aromatics Inc. shall not be liable for any errors or delays in the content, or for any actions taken in reliance thereon. New Directions Aromatics Inc. shall not be responsible for any damages resulting from use of or reliance upon this information. In the event of any dispute, the Customer hereby agrees that Jurisdiction is limited to the province of Ontario.

HPLC Instrument: Thermo Scientific
ARL/EQP
Wavelength: 327 nm
Mobile Phase: Acetonitrile 0.4% phosphoric
acid

Report Summary

Conclusion: This sample of Ashwagandha Liquid Extract contains 1.678 % of total Withanolides

Disclaimer & Caution

Please refer to all relevant technical information specific to the product, prior to use. The information contained in this document is obtained from current and reliable sources. New Directions Aromatics Inc. provides the information contained herein, but makes no representation as to its comprehensiveness or accuracy. Individuals receiving this information must exercise their independent judgment in determining its appropriateness for a particular purpose. The user of the product is solely responsible for compliance with all laws and regulations applying to the use of the products, including intellectual property rights of third parties. As the ordinary or otherwise use(s) of this product is outside the control of New Directions Aromatics Inc., no representation or warranty, expressed or implied, is made as to the effect(s) of such use(s), (including damage or injury), or the results obtained. The liability of New Directions Aromatics Inc. is limited to the value of the goods and does not include any consequential loss. New Directions Aromatics Inc. shall not be liable for any errors or delays in the content, or for any actions taken in reliance thereon. New Directions Aromatics Inc. shall not be responsible for any damages resulting from use of or reliance upon this information. In the event of any dispute, the Customer hereby agrees that Jurisdiction is limited to the province of Ontario.