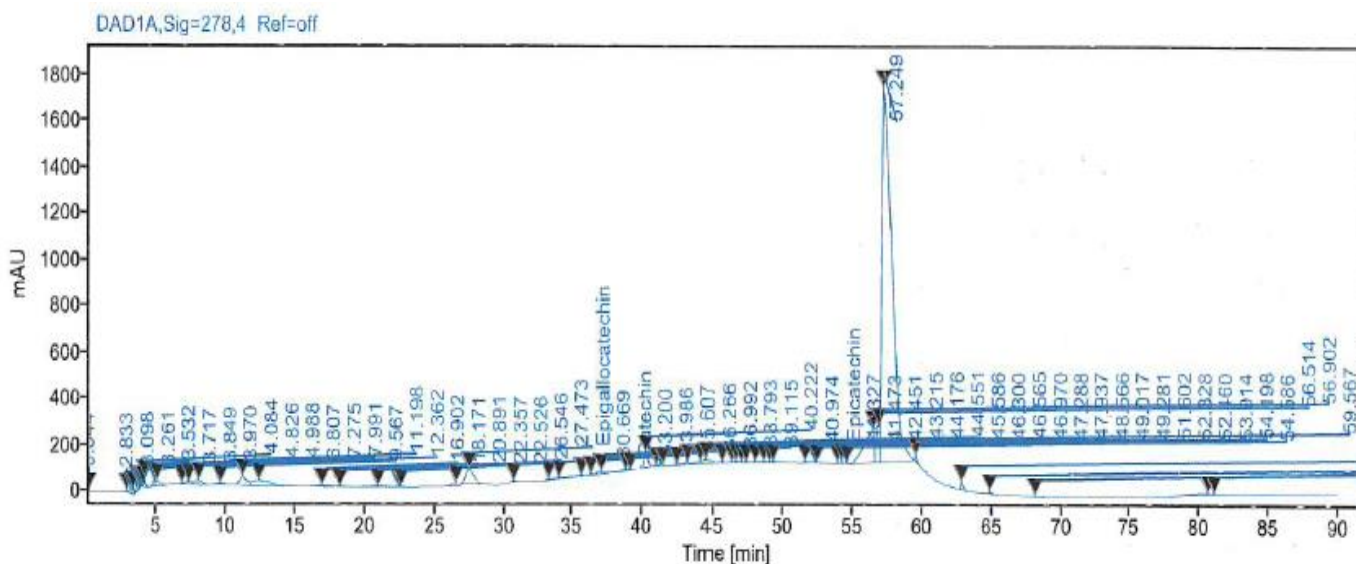


ASSAY ANALYSIS

SAMPLE NAME: DRAGON'S BLOOD LIQUID EXTRACT - 100% NATURAL (STANDARDIZED)
 DATE: March 05/2021

Determination of Polyphenol Content by HPLC



Peak Number	Ret Time [min]	Height	Peak Width	Area %	Name
1	30.800	63.27	1.55	2.28	Catechin
2	40.771	4.85	0.55	0.08	Epicatechin
3	57.231	9.17	0.36	11.64	Epigallocatechin gallate
Total				14	

Disclaimer & Caution

Please refer to all relevant technical information specific to the product, prior to use. The information contained in this document is obtained from current and reliable sources. New Directions Aromatics Inc. provides the information contained herein, but makes no representation as to its comprehensiveness or accuracy. Individuals receiving this information must exercise their independent judgment in determining its appropriateness for a particular purpose. The user of the product is solely responsible for compliance with all laws and regulations applying to the use of the products, including intellectual property rights of third parties. As the ordinary or otherwise use(s) of this product is outside the control of New Directions Aromatics Inc., no representation or warranty, expressed or implied, is made as to the effect(s) of such use(s), (including damage or injury), or the results obtained. The liability of New Directions Aromatics Inc. is limited to the value of the goods and does not include any consequential loss. New Directions Aromatics Inc. shall not be liable for any errors or delays in the content, or for any actions taken in reliance thereon. New Directions Aromatics Inc. shall not be responsible for any damages resulting from use of or reliance upon this information. In the event of any dispute, the Customer hereby agrees that Jurisdiction is limited to the province of Ontario.

Report Summary

Conclusion: This sample of Dragon's Blood Liquid Extract contains 14% of Polyphenol

Peak Number	Ret Time [min]	Height	Peak Width	Area %	Name
2	4.482	370281	0.265	8.8	Naringin
Total				8.8	

Chromatographic Conditions

Column: Promosil C18 5um 4.6*250 mm

Temperature: 35° C

Flow Velocity: 1.0 mL/min

HPLC Instrument: Shimadzu LC-16Test

Wavelength: 284 nm

Mobile Phase: Acetonitrile 74% Water 26%

Report Summary

Conclusion: This sample of Grapefruit Liquid Extract contains 8.8 % of Naringin

Disclaimer & Caution

Please refer to all relevant technical information specific to the product, prior to use. The information contained in this document is obtained from current and reliable sources. New Directions Aromatics Inc. provides the information contained herein, but makes no representation as to its comprehensiveness or accuracy. Individuals receiving this information must exercise their independent judgment in determining its appropriateness for a particular purpose. The user of the product is solely responsible for compliance with all laws and regulations applying to the use of the products, including intellectual property rights of third parties. As the ordinary or otherwise use(s) of this product is outside the control of New Directions Aromatics Inc., no representation or warranty, expressed or implied, is made as to the effect(s) of such use(s), (including damage or injury), or the results obtained. The liability of New Directions Aromatics Inc. is limited to the value of the goods and does not include any consequential loss. New Directions Aromatics Inc. shall not be liable for any errors or delays in the content, or for any actions taken in reliance thereon. New Directions Aromatics Inc. shall not be responsible for any damages resulting from use of or reliance upon this information. In the event of any dispute, the Customer hereby agrees that Jurisdiction is limited to the province of Ontario.